

From: Ian Rucroft
Sent: Thursday, 14 July 2011 10:33 PM
To: Elections
Subject: Redistribution of Electoral Boundries submission from Ian Rucroft
14.7.11
Attachments: Electoral boundries 15.7.11.doc

As a Gungahlin resident I consider that the Redistribution Committee has made a responsible decision by proposing that Ginninderra be made into the 7-Member electorate and Molonglo be made into a 5-Member electorate. I believe that this proposal has considerable merit but it could be further explored to:

- 1) Minimise the disadvantage to the North Canberra and Woden districts
- 2) Structure electoral boundaries to provide improved stability, equality and consideration of future growth.

For the general public, our main exposure to politicians (and political candidates) occurs during the lead up to the ACT elections. However, there are other times when politicians make the effort to seek community contact. Generally this occurs in public places where their constituents gather. If we use the "Shopping Centre" model as a guide to shaping electoral boundaries there is a strong possibility that the community and politicians will benefit.

In the ACT our communities of common interest identify with their local Shopping Centre. These being:

Tuggeranong residents – Tuggeranong Hyperdome
Woden resident – Woden Plaza
Weston Creek residents – Cooleman Court
South Canberra residents – Kingston and Manuka shopping precinct
North Canberra residents – Dickson Shopping Centre
Gungahlin residents – Gungahlin Shopping Centre
Belconnen residents – Belconnen Mall

When a community of common interest is split, politicians have restricted opportunity to engage with their constituents. In reality they need to find out what the electorate's voters have to say, without wasting the time of voters from another electorate. Example - If a politician (from the Molonglo electorate) is engaging with voters at the Dickson Shopping Centre, how interested is that politician in the issues of residents of Lyneham, O'Connor or Turner?

During the period of 2012 - 2016 the majority of the ACT population's growth will occur in the Gungahlin and Molonglo districts. I would like to suggest following model as a guide for future electoral boundaries:

Brindabella (5 Members) - Tuggeranong, Weston Creek and Molonglo
Molonglo (5 Members) – Woden, North and South Canberra
Ginninderra (7 Members) – Belconnen and Gungahlin

As an option for the 2012 election there may be advantages in considering including Acton and Yarralumla into the Brindabella electorate and returning Turner, O'Connor and Lyneham into the Molonglo Electorate.

Yours sincerely
T.I. Rucroft

From: Avinashananda Saraswati
Sent: Sunday, 24 July 2011 9:23 PM
To: Elections
Subject: re-distribution of electorates

Dear Sir or Madam

I am a voter in the Molonglo electorate of Canberra. I live in the Inner North. I have been interested by the suggested re-distribution of electorates. I would say that the Inner North deserves to stay together as a distinct voting community. We have different voting dynamics to any other group. We are closer to the Gungahlin voters in that we share the artery of Northbourne Ave and hence use of Dickson shops, for example. Please keep us together and leave any further re-distribution till 2016 when the changing populations of Belconnen, Gungahlin and Inner North will make a re-distribution more necessary.

Yours sincerely
Avinashi Saraswati

Submission to the Augmented ACT Electoral Commission

Objections to the electoral boundaries redistribution are mainly against splitting districts such as Gungahlin or Woden between 2 electorates. I agree with these objections, and feel electoral boundaries should try to follow the natural geographic boundaries of the ACT. To remove the splitting of Gungahlin between the electorate of Molonglo and Ginninderra, new boundaries have been proposed that now split the Inner North between Molonglo and Ginninderra. I object to the 2nd boundary proposal, as it is just transferring the issue of a split community from Gungahlin to the Inner North.

All of the proposed electoral boundaries use the system of two 5 member electorates and one 7 member electorate. None appear to consider a system of two 6 member electorates and one 5 member electorate. The legislation states an odd number of members are to be elected from each electorate to ensure a total odd number of members, but this can be achieved with 2 even numbers and one odd number.

I think the electoral boundaries should try to follow the natural geographic boundaries in the ACT, should endeavour not to split local districts between 2 electorates, and should consider altering the number of members per electorate while still keeping the total of elected members at 17. If the below distribution is too far outside the box for the 2012 election, then I would prefer the 1st redistribution proposal which contained only minimal changes from the 2008 electoral boundaries.

Ginninderra - All of Belconnen and all of Gungahlin.

Elected members	6
Proposed enrolments for 2012	96689
Deviation from quota	6.94%

This electorate now roughly covers the Ginninderra Creek catchment.

Molonglo - all of the Inner North, all of the Inner South, and all of Woden.

Elected members	5
Proposed enrolments for 2012	77921
Deviation from quota	3.42%

This electorate now roughly covers the Molonglo River catchment.

Brindabella - All of Tuggeranong and all of Weston Creek.

Elected members	6
Proposed enrolments for 2012	81558
Deviation from quota	-9.79%

This electorate now roughly covers the area closest to the Brindabella Mountains.

Details of the below boundaries and number of enrolments are in the below table.

These suggested changes give a result that is outside 5% of the quota division, but within 10% of the quota division. These suggested boundaries do not split any of the local districts between electorates and follow natural geographic boundaries.

Suburb (bold suburbs are moved to a new electorate from proposed)		Projected enrolments 20 Oct 2012 Brindabella	Projected enrolments 20 Oct 2012 Ginninderra	Projected enrolments 20 Oct 2012 Molonglo
Banks	B	3951		
Bonython	B	2831		
Calwell	B	4402		
Chifley	B			1764
Chisholm	B	3709		
Conder	B	4084		
Fadden	B	2323		
Farrer	B			2489
Gilmore	B	1964		
Gordon	B	6193		
Gowrie	B	2371		
Greenway	B	1199		
Isabella Plains	B	3008		
Kambah	B	11101		
Macarthur	B	1184		
Monash	B	4369		
Oxley	B	1309		
Pearse	B			1925
Richardson	B	2166		
Theodore	B	2898		
Torrens	B			1677
Tuggeranong - SSD	B	22		
Wanniassa	B	5591		
Remainder of ACT	B	187		
Amaroo	G		3688	
Aranda	G		1836	
Belconnen Town Centre	G		2843	
Belconnen - SSD	G		30	
Bonner	G		523	
Bruce	G		3659	
Casey	G		723	
Charnwood	G		2052	
Cook	G		2180	
Crace	G		112	
Dunlop	G		5218	
Evatt	G		3865	
Florey	G		3656	
Flynn	G		2458	
Forde	G		862	
Franklin	G		2961	
Fraser	G		1541	
Giralang	G		2425	
Gungahlin	G		3513	
Gungahlin - Hall - SSD	G		16	
Hall	G		228	
Harrison	G		2790	
Hawker	G		2102	
Higgins	G		2137	

Holt	G		3602	
Kaleen	G		5330	
Latham	G		2630	
Lyneham	G			3451
McKellar	G		2161	
Macgregor	G		4088	
Macquarie	G		1819	
Melba	G		2448	
Mitchell	G		8	
Ngunnawal	G		6187	
Nicholls	G		5151	
O'Conner	G			3942
Page	G		2014	
Palmerston	G		4212	
Scullin	G		1859	
Spence	G		1836	
Turner	G			2535
Weetangera	G		1926	
Acton	M			368
Ainslie	M			3973
Barton	M			928
Braddon	M			3157
Campbell - Duntroon - Majura	M			3943
Chapman	M	2087		
City	M			1060
Curtin	M			3975
Deakin	M			2127
Dickson	M			1482
Downer	M			2498
Duffy	M	2260		
Fisher	M	2314		
Forrest	M			1156
Fyshwick	M			21
Garran	M			2342
Griffith	M			3306
Hackett	M			2299
Harman	M			38
Holder	M	1978		
Hughes	M			2196
Hume	M			7
Isaacs	M			1948
Jerrabomberra	M			9
Kingston	M			2368
Kowen	M			26
Lyons	M			1873
Mawson	M			2205
Molonglo Valley - SSD	M			4
Narrabundah	M			4298
Oaks Estate	M			174
O'Malley	M			685
Parkes	M			3
Phillip	M			1558

Pialligo	M				95
Red Hill	M				2340
Reid	M				1139
Rivett	M		2383		
Russell	M				0
Stirling	M		1433		
Stromlo	M				5
Symonston	M				333
Waramanga	M		1825		
Watson	M				3733
Weston	M		2416		
Weston Creek - Stromlo - SSD	M				26
Yarralumla	M				2440
Total			81558	96689	77921
Quota			90412	90412	75344
Variation from quota			-9.79%	6.94%	3.42%

6 Members 6 Members 5 Members
Brindabella Ginninderra Molonglo

Projected enrolments 20 Oct 2012		5 Member	6 Member	7 Member
256168				
Not less than 90% of quota		67809	81371	94933
Not less than 95% of quota		71576	85892	100207
Quota		75344	90412	105481
Not more than 105% of quota		79111	94933	110755
Not more than 110% of quota		82878	99453	116029

From: Geoff Davidson
Sent: Thursday, 21 July 2011 11:38 AM
To: Elections
Subject: ACT Electoral Commission proposed redistribution of electoral boundaries

To the Augmented Electoral Commission:

I object to the second proposed redistribution of the ACT electoral boundaries, which moves Lyneham, O'Connor and Turner from Molonglo to the Ginninderra electorate, on the following grounds:

1. Lyneham, O'Connor, Turner residents have common interests with residents of other Inner North suburbs, being close to a major employment centre, well served by schools and public transport, aged urban infrastructure and similar age and social demographics
2. Ginninderra electorate is comprised of new outer-Canberra suburbs, whose residents have significantly different interests to those of the older suburbs of the Inner North (Lyneham, O'Connor, Turner). For example, lack of urban infrastructure and lack of local employment
3. Ginninderra electorate has a significantly different age and social demographic to the Inner North electorate of Molonglo – Ginninderra electorate has a much younger population than the older suburbs of Lyneham, O'Connor and Turner
4. Ginninderra electorate is physically separate from, and disparate to, the suburbs of Lyneham, Turner and O'Connor.

Yours sincerely,
Susan Davidson

From: Emily Davidson
Sent: Sunday, 24 July 2011 9:30 PM
To: Elections
Subject: Electoral Commission proposed redistribution of electoral boundaries

To the Augmented Electoral Commission:

I object to the second proposed redistribution of the ACT electoral boundaries, which moves Lyneham, O'Connor and Turner from Molonglo to the Ginninderra electorate, on the following grounds:

Lyneham, O'Connor, Turner residents have common interests with residents of other Inner North suburbs, being close to a major employment centre, well served by schools and public transport, aged urban infrastructure and similar age and social demographics.

Ginninderra electorate is comprised of new outer-Canberra suburbs, whose residents have significantly different interests to those of the older suburbs of the Inner North (Lyneham, O'Connor, Turner). For example, lack of urban infrastructure and lack of local employment.

Ginninderra electorate has a significantly different age and social demographic to the Inner North electorate of Molonglo – Ginninderra electorate has a much younger population than the older suburbs of Lyneham, O'Connor and Turner.

Ginninderra electorate is physically separate from, and disparate to, the suburbs of Lyneham, Turner and O'Connor.

Yours sincerely,
Emily Davidson

From: Carol Kee
Sent: Saturday, 23 July 2011 3:11 PM
To: Elections
Subject: submission re new electoral boundaries in ACT

Dear Electoral Commission

Thank you for the opportunity to submit comments on your proposals to change electoral boundaries in the ACT.

Purpose: To vigorously oppose the intention to remove Turner, O'Connor and Lyneham from Molongolo to Gungahlin electorates.

1. The inner north suburbs are part of a cohesive and dynamic community, developed from like interests, philosophies and demographics, over a long period of time.
2. Turner, O'Connor and Lyneham have been established for well over 50 years. Gungahlin suburbs are very new by comparison.
3. By definition almost, the older suburbs have different interests and local problems to those of more recently established suburbs.
4. The older Gungahlin suburbs (still less than 15-20 years old) have a great deal in common with Belconnen suburbs (e.g. Gungahlin and Belconnen have major issues with town planning, roads, development of facilities whereas Turner, O'Connor and Lyneham are more interested in preserving historic buildings, trees; maintaining infrastructure etc).
5. The demographics of Turner, O'Connor and Lyneham fit perfectly with those of the rest of Molongolo. The demographics of inner Gungahlin fit well with those of Belconnen. (e.g. demographically Belconnen has 19% of its population under 14 years of age; Gungahlin has 25% and North Canberra only 13%: taken from 2008 ACT demographer's data).
6. If Turner, O'Connor and Lyneham were moved to Gungahlin, they would have different issues to those of the rest of the large 7 member electorate. A tiny voice in a huge pond. The democratic right of these 3 suburbs would be eroded considerably. Given the best will in the world, their voice **would not** be heard.
7. On the other hand, Gungahlin residents, with similar issues and history to those of Belconnen residents **would** be heard. Their democratic rights would be protected.

Whilst I sympathise with the nominated Gungahlin residents proposed to being moved, their move would be less disruptive than moving the inner north old suburbs. They would retain good and strong representation from like-minded and similar issues people. They would not lose their democratic rights. People in Turner, O'Connor and Lyneham would be badly disrupted and would lose representation from like-minded and similar issues people.

I strongly ask that you consider these points and **do not** approve the proposal to split the Molongolo electorate.

Thanking you

Yours sincerely

Carol Kee

From:
Sent: Monday, 25 July 2011 7:04 AM
To: Elections
Subject: Web Form: Contact Form

Web Form: Contact Form

Name Alan Ford

Response I live in Lyons and am in the Molonglo electorate.

I consider that the inner north is a strong and viable community and it should remain as a unit rather than splitting it up to enable ginninderra to be the 7 member electorate.

I consider that the status quo, Molonglo as a seven member electorate, should be maintained.

Alan Ford

Time Submitted Mon, 25 Jul 2011 07:03:39 +1000

From: Keith and Gillian Helyar
Sent: Monday, 25 July 2011 3:27 PM
To: Elections
Subject: electoral redistribution

To whom it may Concern

I live in the Inner North, as you can see from my address. I am concerned that the proposed electoral redistribution will split this area in two - one half to the east and one half to the west of Northbourne. This area has been well established as a 'community area' for people seeking to live in a specific community, and help build it's functions and amenities.

I support the argument for maintaining the inner north as an electoral entity, rather than splitting it into two.

Gillian Helyar,

From: Keith and Gillian Helyar
Sent: Monday, 25 July 2011 3:47 PM
To: Elections
Subject: Redistribution of electorates submission

Dear Sir/Madam,

I do not support splitting the inner north of Canberra between the Molongalo and Ginninderra electorates. It seems to me to be wise to make minimal changes to the Molongalo electorate at this time - bearing in mind more extensive changes in prospect before the 2016 election, including a possible increase in the number of MLA's to be elected. Apart from the matter of splitting communities that operate at the Community Council level as integrated units, minimal changes at this time will help to retain experienced MLA's in the parliament - an important factor in operation of effective government when the total number of members is small.

Yours sincerely,

Keith Helyar

From: Kristen Krippner
Sent: Tuesday, 26 July 2011 9:03 PM
To: Elections
Subject: Objection to proposed redistribution

Dear Sir/Madam,

We appreciate the opportunity to comment on these proposed electoral redistribution in the ACT

We write to object to the proposed removal of Turner, Lyneham and O'Connor from the Molonglo electorate.

Turner, Lyneham and O'Connor have very little in common with suburbs in Belconnen or Gungahlin but much more so with other inner city suburbs which remain in Molonglo. This is evident whether it relates to dwelling types, development pressures, demographics, amenities and lifestyles.

Given the constant pressures from redevelopment in Inner North Suburbs placing Turner, Lyneham and O'Connor in the same electorate as Belconnen and Gungahlin will really fragment the voice of Inner North residents living in these electorates as we will be a very small minority in the enlarged electorate of Ginninderra.

Whilst there are no easy solutions to maintaining the equality of size in the three electorates the highest priority must be placed on keeping suburbs with similar characteristics together, or as close as possible. Signalling out several older suburbs to combine with the ACT's fastest growing area is a significant loss of representation for the older suburbs. Contrast this to the closer relationship between Belconnen and the older suburbs of Gungahlin, similar style of dwellings and closer demographics.

The issues arising from ever increasing densities and redevelopment in the Inner North are not at all compatible with the needs for fast growing new areas in Gungahlin where service provision is a high priority for the much younger demographic.

We urge the Electoral Commission to reconsider the proposed removal of Turner, Lyneham and O'Connor from the Molonglo electorate.

Regards,

J Garvey and K Krippner

From: Nick Hopkins
Sent: Wednesday, 27 July 2011 9:47 AM
To: Elections
Subject: proposed redistribution

To the ACT Electoral Commissioner,

Basicly and briefly I support the submission of the ACT Greens.
Also, I live in Lyneham and wouldn't want to see the Inner North split in half (only to be rejoined again at a later date)

Regards
Nick Hopkins

From: Ben Halliday '
Sent: Thursday, 28 July 2011 12:17 PM
To: Elections
Subject: ACT Electoral Commission's Proposed Redistribution of the ACT into electorates for the Legislative Assembly

Good morning

I'd like register my opposition to the ACT Electoral Commission's Proposed Redistribution of the ACT into electorates for the Legislative Assembly. I am a long term resident of the Inner North of Canberra.

I believe that any move include Turner, Lyneham and O'Connor in the seat of Ginninderra represents a backward step for genuine representation for electors living in those suburbs. People living generally in the postcode of 2602 use the same amenities, infrastructure and services and share the same/ similar concerns about planning decisions made by the ACT Government. For example Dickson Shops is the major shopping, amenities and centre for services for residents in Turner, Lyneham and O'Connor. Gungahlin town centre is not.

I think that if these Inner North suburbs were removed from the seat of Molonglo it would be at odds with major policy undertakings that are being pursued by the ACT Government, such as its Northbourne Precinct policy, which envisages an expanded and integrated community living in high density accommodation.

I am also concerned that such a move would provide greater representation for residents of new and developing suburbs at the detriment of residents of Turner, O'Connor and Lyneham who have very different concerns about infrastructure and services to Gungahlin.

Yours Sincerely

--

Ben Halliday

From: Davidson, Geoff MR
Sent: Friday, 29 July 2011 7:30 AM
To: Elections
Subject: Electoral Boundary change proposal for ACT-opposed

UNCLASSIFIED

I am strongly opposed to the proposed changes to the inner north suburbs of Lyneham, O'Connor and Turner. These suburbs have the same heart, soul, feel, age, demographics and landscape as the rest of Molonglo, and are quite different in those respects to Gungahlin. The proposed changes would seem to have little regards to the distorted linking deep into Molonglo where linking should be on current adjoining suburbs to Gungahlin of the reasonably similar demographics. Is there a political interest in play here?

Regards

Geoff Davidson
Braddon

Proposed changes to ACT Legislative Assembly electoral boundaries

Dear Commissioners –

Thank you for the opportunity to comment on the proposals.

Of the two proposals, I believe the first – the one that retains the integrity of Canberra's Inner North — is much better.

Primarily because the inner North has been a community for many decades, while Gungahlin has not. Bike paths, bus routes, Haig Park, all cross Northbourne Avenue. We see ourselves as "inner North" residents – it's a term that's been around for as long as I can remember. So splitting us between two electorates seems unnatural.

Another reason: the best way of redistributing boundaries would minimise moves of suburbs in and out of electorates, as population changes happen. In the second proposal, as Gungahlin grows, surely Turner, O'Connor and Lyneham would before long have to be moved back to join their other inner North neighbours in Molonglo? This would be disruptive for people living there.

So I support the first proposal, in which Crace and Palmerston would be transferred from Molonglo to Ginninderra.

Thank you for the work you're doing –



Stephen Hodgkin

From: Michael Thwaites
Sent: Saturday, 30 July 2011 6:13 PM
To: Elections
Subject: Proposed Electoral Redistribution

Dear Sir/Madam

This email is in opposition to the proposed electoral redistribution which will affect the electorate of Molonglo by dividing it in two sections. As a resident and voter living in the area, I feel that there are common interests for those living in the Inner North and it will be more difficult for these interests to be met if the Inner North is divided in two. The Inner North has many green spaces which its residents would like to maintain. Also, there has been discussion of urban densification in the areas both East and West of Northbourne Avenue. I feel that as a single electorate the citizens in Molonglo will best be able to meet its citizens interests.

Given the increasing numbers of residents in the ACT, would it not be better justified to increase the numbers of representatives on the legislative assembly? This appears to be more preferable to me than dividing the Molonglo electorate in order to provide Gungahlin with a fairer proportion of representatives in the legislative assembly?

Thank you for your consideration.

Yours sincerely,

Michael Thwaites

From: Mia Kelly
Sent: Sunday, 31 July 2011 9:31 PM
To: Elections
Subject: Proposed redistribution of the ACT electoral boundaries

Hello

I would like to comment on the proposed redistribution of the ACT electoral boundaries, in particular on the proposal to split the Inner North community. I feel a part of the inner north community and would like to remain represented in the Assembly by politicians who understand the issues throughout the inner north. While I live in O'Connor, I shop at Dickson and at the EPIC markets and mountain bike in the Majura Pines (near Ainsley).

Kind regards

Mia Swainson

From: Jones, Rebecca
Sent: Wednesday, 3 August 2011 9:24 AM
To: Elections
Subject: Redistribution of Electoral Boundaries [SEC=UNCLASSIFIED]

Classification: UNCLASSIFIED

To Whom It May Concern:

It has come to my attention that the ACT Electoral Commission is recommending a redistribution of the electoral boundaries in my seat of Molonglo whereby Molonglo's seats will be reduced from 7 to 5, giving two extra seats to Ginninderra.

As a Molonglo resident, I am quite unhappy with this proposal. While I understand and can sympathise with the reasons for the proposal – from a Ginninderra perspective – I can't begin to understand how this change would be of any benefit to those in my seat.

Those in the current Molonglo seat (essentially inner city) are quite a different demographic from Gungahlin residents. We have a different set of priorities and local concerns, ones that aren't easily equitable to those of residents further afield.

Such seat redistribution does not serve in the greater good of all Canberra residents seat – the size of the new redistribution looks very disruptive for residents, candidates and serving members of the Assembly.

I respectfully request that this proposal be reconsidered and that the original proposal for a modest redistribution be implemented.

Yours sincerely,

Rebecca Jones

Sent: Monday, 1 August 2011 12:14 PM
To: Elections
Subject: Objection to July 2011 proposed redistribution for Molonglo
Attachments: Electoral Redistribution re Molonglo Aug2011.odt

Attached is a formal objection with respect to the latest (July 2011) version of the proposed redistribution for Canberra's electoral boundaries.

The document is in Open Office. Please contact me if there is any problem with opening it, or with the formatting.

M Foster (Dr)

ACT Electoral Commission
PO Box 272
CIVIC SQUARE ACT 2608
elections@act.gov.au

Dear Sir/Madam

This is a formal objection with respect to the latest (July 2011) version of the proposed redistribution for Canberra's electoral boundaries.

I have noted the various criteria that are legislatively required for consideration by the Augmented Commission when making electoral redistributions in the ACT. However, I consider that the latest proposal does not apply the criteria appropriately, and this is to the detriment of the overall electoral redistribution objective. In particular, the residents of O'Connor, Turner and Lyneham have been disadvantaged for no noticeable improvement in the electoral redistribution process.

One of the more noticeable aspects of the Augmented Commission's report is that it makes many assertions. Seemingly it has arrived at an idea (in particular, making Gungahlin the 7-member electorate) through listening to the loudest complaints rather than fact-based analysis of the problem. Unsubstantiated assertions are often then made to try to justify re-arranging electorates to obtain this outcome.

Examples of this less-than-adequate approach can be given by analysing several key statements in the report. Since I am an inner-north resident, I have only addressed aspects that affect this area. This approach has been prompted by my very strong view that my community of interest is best preserved by O'Connor, Turner and Lyneham remaining in the Molonglo electorate.

Example 1

The Augmented Commission also noted that many objections referred to the diverse nature and large size of the existing electorate of Molonglo (p13)

Reading the submissions, I certainly found that some Gungahlin residents made assertions about the so-called diverse nature of Molonglo. However there was no substantiation/quantification of this view, and one could just as well make a similar observation about Gungahlin and Belconnen, albeit focussing on different aspects. Under a counterview, the older infrastructure, and possibly the older population (for example), of much of Molonglo contribute in their own ways to a community of interest with particular needs.

Now that inner north areas have been alerted to the need to argue for their community of interest, the Augmented Commission might find that there are objections to the diverse nature of the new electorate of Gungahlin.

Example 2

... given too much weight to the criterion regarding existing electoral boundaries and too little weight to the other criteria related to community of interests, including economic, social and regional interests, means of communication and travel, and physical features and area. (p12)

There are some quite logical reasons why greater weight might be given to minimising changes to existing boundaries. In particular, it is relatively straight-forward and not subject to as much interpretation as "other less tangible criteria" (p13) criteria. It is only a few years until the next redistribution process, and speculations as to future growth areas are not necessarily useful.

Example 3

The Augmented Commission had sympathy with the submissions that argued that, as a rapidly growing new area, the fact that Gungahlin was split between two electorates divided the clear community of interests represented by the new community of Gungahlin, at a critical point in its development. (p12)

It could just as well be argued that much of Molonglo is undergoing growth too, though of a different type as it is more focussed on in-filling and replacing older infrastructure. This current era is also a "critical point" in the development of the inner suburbs.

Example 4

"The Augmented Commission is inclined to accept the view that Molonglo now contains more significant variations of economic, social and regional interests, and more extensive networks of communication and travel, than it did at its inception." (p13)

The relevance as well as the accuracy of this statement is debateable. In particular, every electorate would have more variation in just about everything than "at its inception".

Example 5

... proposed transfer of Gungahlin to the same electorate as Belconnen received extensive endorsement by submissions from Gungahlin residents and the Gungahlin Community Council. (p13)

Yes, because inner north residents of Turner, O'Connor and Lyneham possibly assumed that the original commission report seemed quite sensible and minimalist (as required), and so did not feel the need to defend remaining in Molonglo.

Example 6

Lyneham, O'Connor and Turner – that had close connections with each other and which were delineated by the major multi-lane thoroughfares of Northbourne Avenue and Barry Drive. The Committee also noted that two of these three suburbs were immediately adjacent to the Belconnen suburbs of Kaleen and Bruce, that they shared access to O'Connor Ridge Nature Park and that they had strong transport links along Belconnen Way, Ginninderra Drive and the Barton Highway. The Committee also noted these areas had a range of other connections due to their proximity, including access to schools, shops, sporting facilities and

Calvary Hospital. (p13)

These isolated observations have little discriminatory power in terms of making a decision as to what suburbs should go where. Similar statements could be made about almost any set of contiguous suburbs in the ACT. Furthermore, the commonality of links of these and other inner north suburbs to the ANU and Lake Burley Griffin could just as easily be emphasised.

Regarding transport and shopping links, as a resident of the one of the inner north suburbs that the latest proposal considers shifting to Gunghalin, I can most emphatically state that my community of interest is much more closely aligned with inner north suburbs on the other side of Northbourne Avenue than with any part of the Gunghalin electorate. I would suggest that I am not alone in this.

Example 7

While this is a major change, it is one which will make it more likely that the stability of boundaries will be enhanced in the future. (p13)

This is quite a speculative statement. More importantly, it pales into insignificance in the face of the movement of 31,600 electors under the latest proposal versus 4000 in the previous one.

It is of interest to note that the previous report noted that *its* redistribution proposal (which did not recommend transferring any inner north suburbs) had an advantage with respect to stability of boundaries:

the transfer of Crace would include in Ginninderra a developing suburb that could be expected to have high growth after the 2012 election, which may assist in preserving the stability of the boundaries at the following redistribution. (p15)

Example 8

In reaching this conclusion it agreed with the assessment made by the Redistribution Committee that, if Belconnen and Gungahlin are to be combined into a 7-Member electorate, the most appropriate suburbs to include would be Lyneham, O'Connor and Turner. (p15)

This statement is somewhat disingenuous, pulling out an assessment made by the previous Committee concerning one option without noted the reasons for the rejection by that previous Committee of this option.

In conclusion, I believe that the Augmented Commission should revert to the redistribution recommended by the Redistribution Committee since the previous proposal achieved the necessary balancing of electorate numbers without excessive changes to boundaries.

Yours sincerely

M Foster (Dr)

From: David Ferris
Sent: Wednesday, 3 August 2011 5:12 PM
To: Elections
Subject: Proposed Redistribution

I understand that the ACT Electoral Commission is considering a redistribution which would split the Inner North - the east side of Northbourne Avenue staying in the Molonglo electorate with the west side being moved into the Ginninderra electorate, joining up with Gungahlin.

This redistribution proposal seems to me to be counterintuitive. It seems sensible for communities with common interests to stay together. This makes it easier for members to get a more "unified" view of their electorate's interests and - the other side of the coin - for voters with common issues to identify which members to approach.

The Inner North is one community with very similar interests.

My own experience exemplifies this. for over 20 years I lived in Dickson. Two years ago, I moved to Lyneham (The Sanctuary) - less than 1 kilometre away, but apparently, if the redistribution proposal is to be taken at face value, now with more in common with voters in Palmerston and Ngunnawal than with other Inner North residents.

I still:

- frequent the same library (Dickson) - the one used by most Inner North residents on either side of Northbourne
- do my groceries in the same shopping precinct (Dickson) - the one used by most Inner North residents on either side of Northbourne
- eat out and buy takeaway at the same restaurants in Dickson as previously
- ride pretty much the same public transport routes - the Dickson Interchange remains my main hub or spoke or whatever the right word is
- still commute the same way to work as I used to
- face pretty much the same commuter and parking issues as other residents of the Inner North - very few of which are 'common' with residents of Gungahlin
- ride pretty much the same bike paths
- go to the same 'community club' facilities that I used to - Ainslie Football Club and Dickson Tradies - the main ones for all residents of the Inner North
- if I go to the local footie, I still go to Ainslie Oval to watch it, even though I am not on the "west" side of Northbourne
- go to the same bridge and chess clubs as before (not in Gungahlin)
- I still keep my Dickson post office box and use the Dickson post office for nearly all my parcels and correspondence. Note that I still have the same post code even though I have crossed "the Rubicon" of Northbourne Avenue.
- still play my golf at the closest course - Yowani - not Gold Creek or Gungahlin Lakes
- still meet my friends at the same meeting places as before (Tilleys and All Bar Nun)
- still go to the same medical practice (in Watson - which would be outside my electorate in your proposal).
- still go to the same parks and ramble on the same walking tracks as I used when I lived in Dickson (again - I have only moved about a kilometre!)
- have the same access to broadband and telephone services and I face the same issues with television reception as other residents of the Inner North.

In contrast, although I am now to be lumped in with residents of that area (under the proposal you are considering), I have only ever been to the Gungahlin shops about three times in my 25 years in Canberra. I have never been on a cycle path out that way, nor used any of the community facilities. I have never ridden a bus in that direction or been in peak hour traffic on the main arteries out to Gungahlin. There are suburbs in the Gungahlin area that I have never been in whereas I have probably at one time or another walked down every street of the Inner North.

There is, of course, nothing wrong with people from Gungahlin (or anywhere else in Canberra) - but from the perspective of community facilities, transport, zoning and planning issues, medical services, communications, shopping, parking or whatever, I simply do not face the same issues as people in Gungahlin. Rather, I face the same issues as other people in the Inner North - no matter which side of Northbourne they are on. I am sure that 99% of other residents of the Inner North would say the same thing.

It therefore makes sense to keep voters of the Inner North within the same electorate.

Please do not split us into separate electorates.

Should you wish to contact me about any of these issues, I would be more than happy to engage further.

David Ferris

From: Logan McLennan
Sent: Wednesday, 3 August 2011 5:14 PM
To: Elections
Subject: Redistribution Submission

I write to register my opposition to the augmented redistribution currently proposed by Elections ACT. This proposed redistribution fails to satisfy several of the ACT Electoral Commission's own criteria.

Section 36 of the Electoral Act requires that any redistribution duly consider:

(i) the community of interests within each proposed electorate, including economic, social and regional interests.

While the redistribution appears to be intended to enclose all of Gungahlin within one electorate, it tries to achieve this by dividing the Inner North of Canberra across both the Molonglo and Ginninderra electorates. The Electoral Commission is seeking to consolidate one community of interest at the expense of another. As a resident of O'Connor my community of interest is being arbitrarily relocated from the electorate of Molonglo to the electorate of Ginninderra. The ACT Electoral commission has seen fit to pass judgement that my interests lie in voting with areas of Canberra in which I have no social, economic or regional interests. I live in O'Connor because I shop, commute, work, play sport, volunteer and socialise in the Inner North.

(ii) the means of communication and travel within each proposed electorate;

Residents of Turner, O'Connor and Lyneham are fully integrated into a community of interest in the Inner North which involves explicit networks of communication and transport. These networks of communication and travel feed directly into Canberra city. Residents of Turner, O'Connor and Lyneham live where they do because they travel to and interact with Canberra city, not because they travel to and interact with Belconnen or Gungahlin. The proposed redistribution uses Northbourne Avenue as a boundary between electorates. Any due consideration of *the means of communication and travel within an electorate* would immediately reject electorates being bordered by main transport arterials. To border an electorate with a transport arterial is to have failed to understand the relationship between a locality and its means of transport. Based on the proposed redistribution, the ACT electoral Commission appears convinced that residents of Turner, O'Connor and Lyneham have less of an interest in the Northbourne Avenue transport corridor than they do in Gungahlin Drive or Kingsford-Smith Drive. As a resident of O'Connor I commute on roads and bike paths in the electorate of Molonglo every single day. If the proposed redistribution goes ahead and I am required to vote in Ginninderra, I will have little to no recourse to lobby the Government for the services I require daily.

(iii) the physical features and area of each proposed electorate;

The suburbs of Turner, O'Connor and Lyneham are overtly distinct from the rest of the current electorate of Ginninderra, so much so that they are separated from the nearest Ginninderra suburbs by the Black Mountain - O'Connor Ridge. The suburbs of Turner, O'Connor and Lyneham are clearly and physically a part of the Inner North and by extension, the electorate of Molonglo. To

suggest Turner, O'Connor and Lyneham are part of some greater North –Western Canberra is completely disingenuous.

(iv) the boundaries of existing electorates;

The proposed redistribution takes little or no account of the existing electorates. The ACT Electoral Commission has proposed a radical change to the electorates of Canberra despite the Electoral Act advising conservative changes. While the proposed redistribution may well be intended to locate all of Gungahlin in the one electorate, it does so through too great a change. In the medium term, the ACT Legislative Assembly needs to be expanded to include more seats. While this will not happen before the October 2012 election, it is incumbent upon Elections ACT to maintain existing electorates insofar as possible, until greater systemic change can be achieved through the Federal Parliament at a later date. The redistribution proposed by Elections ACT in March 2011 would serve to facilitate the 2012 ACT election with much less short term disruption.

For all of the above reasons, I wish to strongly object to the redistribution currently proposed by Elections ACT.

Sincerely

Logan McLennan
O'Connor

From: brendan baxter
Sent: Wednesday, 3 August 2011 10:55 PM
To: Elections
Subject: Electoral Boundary Changes: objection to current proposal

To the ACT Electoral Commission.

As a resident of the Canberra's Inner North, I am writing to object to the current Electoral Commission proposal to split the electoral boundaries for the Inner North along Northbourne Avenue. Canberra's Inner North is a clear geographic/physical entity and a local community with common economic, social and regional interests. This common social identity and clear physical boundaries of the Inner North community has held true both historically and for the foreseeable future. My experience is that many Inner North residents live on one side of Northbourne Ave but rely everyday on services on the other side of the Avenue, such as school, work or access to local services such as library and health services. As these kinds of daily services are often a key consideration for residents at elections, I believe that currently proposed division along Northbourne Avenue is a very detrimental change to the electoral boundaries.

Instead of the current proposal, I prefer the previous proposal published by the Redistribution Committee on 5 May 2011 The ACT to transfer Crace and Palmerston from Molonglo to Ginninderra. I also encourage the Commission to identify further options that are less locally divisive.

yours sincerely

Brendan Baxter

From: McDermid, Ian
Sent: Wednesday, 3 August 2011 7:13 PM
To: Elections
Subject: Further objection to the second proposed 2011 redistribution
Attachments: Copy of Current_and_projected_stats_.xls

Dear Mr Green,

I am a resident of Turner and a enrolled voter, up until now in the Molonglo division. I work at the ANU, but the following are my own private views.

Having read the "Statement by the Augmented Electoral Commission", I agree with the statements towards the end of page 14 and the views of the Turner Resident's Association expressed at the top of page 15 of that document. As an inner-city resident of a long established suburb, who walks, cycles or uses public transport and rarely uses my private motor vehicle; on community and electoral issues, I definitely feel a closer affinity to other residents of the North Canberra area, than I do with residents of Belconnen and Gungahlin (even though other members of my family live in Belconnen).

I also feel that the Augmented Commission were a little hasty in dismissing Mr Reynolds' alternative suggestion, mentioned on page 11. Some quick calculations using your spreadsheet (copy attached – the only changes are on Table 1 and a new pivot table) suggest that a 5 seat Molonglo electorate consisting of all of North Canberra, South Canberra and Woden Valley; a 5 seat Brindabella electorate consisting of all of Tuggeranong and all of the southern ACT located west of Tuggeranong Parkway and south of Hindmarsh Drive, Bulger Creek and the Murrumbidgee River (which includes the Weston Creek suburbs of Chapman, Fisher, Rivett, Stirling and Waramanga); and a 7 seat Ginninderra electorate consisting of all of Gungahlin, Hall, Belconnen, the Molonglo Valley, Stromlo and the northern Weston Creek suburbs of Duffy, Holder and Weston would have the following profiles:

<<Copy of Current_and_projected_stats_.xls>>

Alternative Proposal	Number of Members	Approx. Enrolment 2011	Projected Enrolment Oct 2012	% above or below quota 2012
Brindabella	5	74137	74909	-0.58%
Ginninderra	7	98117	103373	-2.00%
Molonglo	5	75661	77886	+3.38%

I feel this proposal has the following advantages:

1. It keeps all but one of Canberra's regional "townships" in a single electorate, i.e. under this proposal, none of Gungahlin, Belconnen, North Canberra, South Canberra, Woden Valley, Tuggeranong or Molonglo Valley are split between electorates, only Weston Creek.
2. It provides for future growth better than the proposal currently favoured by the Augmented Commission (refer page 2). Even without Molonglo Valley, the above proposed electorate of Molonglo does have some potential for growth with urban "in-fill" in older suburbs; new unit developments in Civic, Braddon and other areas of the inner North such as my own suburb of Turner, and townhouse developments such as those in northern Watson. I also argue that this

growth is decidedly different in character to the “green-fields” suburban growth in Gungahlin and Molonglo Valley and therefore will attract new residents with different electoral interests. Even with this new growth, Molonglo’s future growth will be small relative to the rest of the ACT and the % over-quota will gradually diminish with time. Under both proposals, the electorate of Brindabella is under-quota and has no obvious new growth areas; but under the above proposal, an obvious way to address this in future redistributions, would be to transfer the northern Weston Creek suburbs (and even later the Molonglo Valley) from the high growth Ginninderra electorate to the low growth Brindabella electorate, eventually re-uniting Weston Creek in a single electorate.

3. All of the percentages under or over quota in this proposal are less than the -3.49% under-quota that the Brindabella electorate will be under the proposal currently favoured by the Augmented Commission. Under that proposal and under the current electoral system, the only way that this under-quota percentage can be readily be addressed in future redistributions is by carving off even more suburbs in the southern Woden Valley to move from the Molonglo to the Brindabella electorate. To compensate for this, future redistributions will probably have to return Turner, then O’Connor and finally Lyneham from the high growth Ginninderra electorate to the Molonglo electorate.

The obvious disadvantage of this proposal is that it does (temporarily) split Weston Creek between two electorates, which is contrary to current and historical objections, effectively isolating the suburbs of Duffy, Holder and Weston from the remainder of their community. However, I feel it is probably better to temporarily inconvenience the (projected) 6,680 residents of these three suburbs, rather than the (projected) 7,855 residents of the Woden Valley suburbs of Chifley, Farrer, Pearce and Torrens AND the (projected) 9,928 residents of the North Canberra suburbs of Lyneham, O’Connor and Turner (including me).

Regards, Ian

```
=====
Ian McDermid
Lecturer in Statistics
School of Finance, Actuarial Studies and Applied Statistics
College of Business and Economics
Room 3.08, ANU CBE Building [26C]
The Australian National University
Canberra ACT 0200 Australia
```

Pivot table

			Data	
Proposal2	SSD	Suburb	Sum of Actual	Sum of Projected
Brindabella			74137	74909
Ginninderra			98117	103373
Molonglo			75661	77886
Grand Total			247915	256168

Current and Projected Numbers of Persons Enrolled

Table 1: Australian Capital Territory

Suburb	Actual persons enrolled 30-Sep-10	Projected persons enrolled 20-Oct-12	% change	Present electorate	Proposed new electorate	Alternative new proposal	SSD
Suburb	Actual	Projected	Change	Present	Proposed	Proposal2	SSD
Acton	360	368	2.22%	Molonglo	Molonglo	Molonglo	North Canberra
Ainslie	3864	3973	2.82%	Molonglo	Molonglo	Molonglo	North Canberra
Amaroo	3563	3688	3.51%	Molonglo	Ginninderra	Ginninderra	Gungahlin-Hall
Aranda	1842	1836	-0.33%	Ginninderra	Ginninderra	Ginninderra	Belconnen
Banks	3370	3951	17.24%	Brindabella	Brindabella	Brindabella	Tuggeranong
Barton	827	928	12.21%	Molonglo	Molonglo	Molonglo	South Canberra
Belconnen Town Centre	2386	2843	19.15%	Ginninderra	Ginninderra	Ginninderra	Belconnen
Belconnen - SSD Bal	32	34	6.25%	Ginninderra	Ginninderra	Ginninderra	Belconnen
Bonner	129	523	305.43%	Molonglo	Ginninderra	Ginninderra	Gungahlin-Hall
Bonython	2663	2831	6.31%	Brindabella	Brindabella	Brindabella	Tuggeranong
Braddon	2770	3157	13.97%	Molonglo	Molonglo	Molonglo	North Canberra
Bruce	3044	3659	20.20%	Ginninderra	Ginninderra	Ginninderra	Belconnen
Calwell	4225	4402	4.19%	Brindabella	Brindabella	Brindabella	Tuggeranong
Campbell / Duntroon / Majura	3923	3943	0.51%	Molonglo	Molonglo	Molonglo	North Canberra
Casey	229	723	215.72%	Molonglo	Ginninderra	Ginninderra	Gungahlin-Hall
Chapman	2201	2087	-5.18%	Molonglo	Molonglo	Brindabella	Weston Creek-Stromlo
Charnwood	2123	2052	-3.34%	Ginninderra	Ginninderra	Ginninderra	Belconnen
Chifley	1720	1764	2.56%	Brindabella	Brindabella	Molonglo	Woden Valley
Chisholm	3873	3709	-4.23%	Brindabella	Brindabella	Brindabella	Tuggeranong
City	864	1060	22.69%	Molonglo	Molonglo	Molonglo	North Canberra
Conder	3501	4084	16.65%	Brindabella	Brindabella	Brindabella	Tuggeranong
Cook	2181	2180	-0.05%	Ginninderra	Ginninderra	Ginninderra	Belconnen
Crace	32	112	250.00%	Molonglo	Ginninderra	Ginninderra	Gungahlin-Hall
Curtin	3958	3975	0.43%	Molonglo	Molonglo	Molonglo	Woden Valley
Deakin	2110	2127	0.81%	Molonglo	Molonglo	Molonglo	South Canberra
Dickson	1432	1482	3.49%	Molonglo	Molonglo	Molonglo	North Canberra
Downer	2468	2498	1.22%	Molonglo	Molonglo	Molonglo	North Canberra
Duffy	2390	2260	-5.44%	Molonglo	Molonglo	Ginninderra	Weston Creek-Stromlo
Dunlop	4450	5218	17.26%	Ginninderra	Ginninderra	Ginninderra	Belconnen
Evatt	4058	3865	-4.76%	Ginninderra	Ginninderra	Ginninderra	Belconnen
Fadden	2489	2323	-6.67%	Brindabella	Brindabella	Brindabella	Tuggeranong
Farrer	2579	2489	-3.49%	Brindabella	Brindabella	Molonglo	Woden Valley
Fisher	2355	2314	-1.74%	Molonglo	Molonglo	Brindabella	Weston Creek-Stromlo
Florey	3606	3656	1.39%	Ginninderra	Ginninderra	Ginninderra	Belconnen
Flynn	2624	2458	-6.33%	Ginninderra	Ginninderra	Ginninderra	Belconnen
Forde	633	862	36.18%	Molonglo	Ginninderra	Ginninderra	Gungahlin-Hall
Forrest	1142	1156	1.23%	Molonglo	Molonglo	Molonglo	South Canberra
Franklin	1189	2961	149.03%	Molonglo	Ginninderra	Ginninderra	Gungahlin-Hall
Fraser	1637	1541	-5.86%	Ginninderra	Ginninderra	Ginninderra	Belconnen
Fyshwick	24	21	-12.50%	Molonglo	Molonglo	Molonglo	South Canberra
Garran	2317	2342	1.08%	Molonglo	Molonglo	Molonglo	Woden Valley
Gilmore	2004	1964	-2.00%	Brindabella	Brindabella	Brindabella	Tuggeranong
Giralang	2594	2425	-6.52%	Ginninderra	Ginninderra	Ginninderra	Belconnen
Gordon	5450	6193	13.63%	Brindabella	Brindabella	Brindabella	Tuggeranong
Gowrie	2482	2371	-4.47%	Brindabella	Brindabella	Brindabella	Tuggeranong
Greenway	1088	1199	10.20%	Brindabella	Brindabella	Brindabella	Tuggeranong
Griffith	3172	3306	4.22%	Molonglo	Molonglo	Molonglo	South Canberra
Gungahlin	3120	3513	12.60%	Molonglo	Ginninderra	Ginninderra	Gungahlin-Hall
Gungahlin-Hall - SSD Bal	16	16	0.00%	Molonglo	Ginninderra	Ginninderra	Gungahlin-Hall
Hackett	2265	2299	1.50%	Molonglo	Molonglo	Molonglo	North Canberra
Hall	235	228	-2.98%	Ginninderra	Ginninderra	Ginninderra	Gungahlin-Hall
Harman	41	38	-7.32%	Molonglo	Molonglo	Molonglo	South Canberra
Harrison	2462	2790	13.32%	Molonglo	Ginninderra	Ginninderra	Gungahlin-Hall
Hawker	2199	2102	-4.41%	Ginninderra	Ginninderra	Ginninderra	Belconnen
Higgins	2260	2137	-5.44%	Ginninderra	Ginninderra	Ginninderra	Belconnen
Holder	2077	1978	-4.77%	Molonglo	Molonglo	Ginninderra	Weston Creek-Stromlo
Holt	3506	3602	2.74%	Ginninderra	Ginninderra	Ginninderra	Belconnen
Hughes	2163	2196	1.53%	Molonglo	Molonglo	Molonglo	Woden Valley
Hume	7	7	0.00%	Molonglo	Molonglo	Molonglo	South Canberra
Isaacs	1903	1948	2.36%	Molonglo	Molonglo	Molonglo	Woden Valley
Isabella Plains	2988	3008	0.67%	Brindabella	Brindabella	Brindabella	Tuggeranong
Jerrabomberra	8	9	0.00%	Molonglo	Molonglo	Molonglo	South Canberra
Kaleen	5701	5330	-6.51%	Ginninderra	Ginninderra	Ginninderra	Belconnen
Kambah	11752	11101	-5.54%	Brindabella	Brindabella	Brindabella	Tuggeranong
Kingston	2179	2368	8.67%	Molonglo	Molonglo	Molonglo	South Canberra
Kowen	25	26	4.00%	Molonglo	Molonglo	Molonglo	North Canberra
Latham	2775	2630	-5.23%	Ginninderra	Ginninderra	Ginninderra	Belconnen

Suburb	Actual persons enrolled 30-Sep-10	Projected persons enrolled 20-Oct-12	% change	Present electorate	Proposed new electorate	Alternative new proposal	SSD
Lynham	3340	3451	3.32%	Molonglo	Ginninderra	Molonglo	North Canberra
Lyons	1831	1873	2.29%	Molonglo	Molonglo	Molonglo	Woden Valley
McKellar	2131	2161	1.41%	Ginninderra	Ginninderra	Ginninderra	Belconnen
Macarthur	1161	1184	1.98%	Brindabella	Brindabella	Brindabella	Tuggeranong
Macgregor	3346	4088	22.18%	Ginninderra	Ginninderra	Ginninderra	Belconnen
Macquarie	1794	1819	1.39%	Ginninderra	Ginninderra	Ginninderra	Belconnen
Mawson	2192	2205	0.59%	Molonglo	Molonglo	Molonglo	Woden Valley
Melba	2464	2448	-0.65%	Ginninderra	Ginninderra	Ginninderra	Belconnen
Mitchell	8	8	0.00%	Molonglo	Ginninderra	Ginninderra	Gungahlin-Hall
Monash	4205	4369	3.90%	Brindabella	Brindabella	Brindabella	Tuggeranong
Narrabundah	4199	4298	2.36%	Molonglo	Molonglo	Molonglo	South Canberra
Ngunnawal	6008	6187	2.98%	Molonglo	Ginninderra	Ginninderra	Gungahlin-Hall
Nicholls	4990	5151	3.23%	Ginninderra	Ginninderra	Ginninderra	Gungahlin-Hall
Oaks Estate	192	174	-9.38%	Molonglo	Molonglo	Molonglo	South Canberra
O' Connor	3833	3942	2.84%	Molonglo	Ginninderra	Molonglo	North Canberra
O' Malley	664	685	3.16%	Molonglo	Molonglo	Molonglo	Woden Valley
Oxley	1311	1309	-0.15%	Brindabella	Brindabella	Brindabella	Tuggeranong
Page	2009	2014	0.25%	Ginninderra	Ginninderra	Ginninderra	Belconnen
Palmerston	3887	4212	8.36%	Molonglo	Ginninderra	Ginninderra	Gungahlin-Hall
Parkes	3	3	0.00%	Molonglo	Molonglo	Molonglo	South Canberra
Pearce	1917	1925	0.42%	Brindabella	Brindabella	Molonglo	Woden Valley
Phillip	1333	1558	16.88%	Molonglo	Molonglo	Molonglo	Woden Valley
Pialligo	95	95	0.00%	Molonglo	Molonglo	Molonglo	South Canberra
Red Hill	2316	2340	1.04%	Molonglo	Molonglo	Molonglo	South Canberra
Reid	1107	1139	2.89%	Molonglo	Molonglo	Molonglo	North Canberra
Richardson	2272	2166	-4.67%	Brindabella	Brindabella	Brindabella	Tuggeranong
Rivett	2370	2383	0.55%	Molonglo	Molonglo	Brindabella	Weston Creek-Stromlo
Russell	0	0	0.00%	Molonglo	Molonglo	Molonglo	North Canberra
Scullin	1982	1859	-6.21%	Ginninderra	Ginninderra	Ginninderra	Belconnen
Spence	1937	1836	-5.21%	Ginninderra	Ginninderra	Ginninderra	Belconnen
Stirling	1496	1433	-4.21%	Molonglo	Molonglo	Brindabella	Weston Creek-Stromlo
Stromlo	6	5	-16.67%	Molonglo	Molonglo	Brindabella	Weston Creek-Stromlo
Symonston	332	333	0.30%	Molonglo	Molonglo	Molonglo	South Canberra
Theodore	2740	2898	5.77%	Brindabella	Brindabella	Brindabella	Tuggeranong
Torrens	1694	1677	-1.00%	Brindabella	Brindabella	Molonglo	Woden Valley
Tuggeranong - SSD Bal	26	22	-15.38%	Brindabella	Brindabella	Brindabella	Tuggeranong
Turner	2461	2535	3.01%	Molonglo	Ginninderra	Molonglo	North Canberra
Wanniassa	5950	5591	-6.03%	Brindabella	Brindabella	Brindabella	Tuggeranong
Waramanga	1942	1825	-6.02%	Molonglo	Molonglo	Brindabella	Weston Creek-Stromlo
Watson	3629	3733	2.87%	Molonglo	Molonglo	Molonglo	North Canberra
Weetangera	1994	1926	-3.41%	Ginninderra	Ginninderra	Ginninderra	Belconnen
Weston	2444	2416	-1.15%	Molonglo	Molonglo	Ginninderra	Weston Creek-Stromlo
Weston Creek-Stromlo - SSD Ba	30	26	-13.33%	Molonglo	Molonglo	Ginninderra	Weston Creek-Stromlo
Yarralumla	2402	2440	1.58%	Molonglo	Molonglo	Molonglo	South Canberra
Remainder of ACT	217	187	-13.82%	Brindabella	Brindabella	Brindabella	Tuggeranong
Total	247915	256168	3.33%				

From:
Sent: Thursday, 4 August 2011 7:52 AM
To: Elections
Subject: new electoral boundaries

Importance: Low

I'm not sure what prompted the proposal to change the electoral boundaries but I feel that changing the Molonglo electorate will disperse a strong community with a particular set of values. Living and voting in O'Connor I have always felt that I live among like-minded people who are able to elect a member who represents those values.

Regards

Nicci Haynes

From: Turner Residents Association
Sent: Thursday, 4 August 2011 9:33 AM
To: Elections
Subject: Proposed Redistribution of ACT Electorates
Attachments: Electoral Boundaries - Objections.doc

Please find attached submission from Turner Residents Association on behalf of Turner residents.

TURNER RESIDENTS ASSOCIATION INC.
P O BOX 6169
O'CONNOR A C T 2602
EMAIL turner.residents@hotmail.com

Mr Phillip Green
ACT Electoral Commissioner,
ACT Electoral Commission
P O Box 272
Civic Square ACT 2601

3 August 2011

Dear Mr Green,

RE: Redistribution of the ACT Electorates

The Turner Residents Association (TRA) is grateful for the opportunity to address the guidelines for its views and concerns about the ACT Electoral Commission's Proposed Redistribution of the ACT's electorates. We are especially grateful for the Electoral Commission's decision to extend the timeframe for receiving submissions from the public, especially in light of the hitherto low level of community awareness about the importance of the process and its democratic implications — especially the radical and unprecedented extent of the electoral redistribution that is currently being proposed as a result of earlier submissions and objections considered by the Augmented Commission.

The TRA endorses the Redistribution Committee's original proposal for the retention of a seven member Molonglo seat through the transfer of Crace and Palmerston into the seat of Ginninderra — this represented a careful, sensible and equitable balancing of interests by the Electoral Commission and one that most minimises disruption and delivers certainty for voters, candidates and MLAs alike.

In support of this view we address the guidelines which the Committee and Commission **must duly consider**. *Guideline C(i)* specifies the need for due consideration for the community of interests within each proposed electorate including economic, social and regional interests.

Turner is one of the suburbs which surround the city and was developed according to the 'garden city' concept which historically has been the defining character of Canberra. It has enabled ACT residents to 'belong' to a planned city of parks and open spaces. The older suburbs require adequate electoral representation as a bloc to preserve this character. The alternative is to artificially combine old and new suburbs which have few common interests.

Turner is one of the long established suburbs together with those in the inner north. It was settled during the 1940s some 70 years prior to Gungahlin which was commenced during 1991. It is a vibrant, decades-old social community whose residents continue to share common values and bonds and pursue

initiatives, notwithstanding gradual demographic alteration brought about by densification.

North Canberra, South Belconnen and Woden contain nearly half of all people aged 65 and over in Canberra. In contrast, the more recently settled suburbs of Gungahlin and South Tuggeranong have fewer numbers of older residents. Based on this demographic they have similar infrastructure needs such as transport, support services and social networks. They therefore belong together electorally.

The inner north and south suburbs are situated in the vicinity of the major social, cultural, educational and legal institutions of the National Capital. Their shared voice is paramount to the maintenance and development of these institutions for the use and participation of all ACT residents.

The North Canberra suburbs have a long-standing, organic connection to the remainder of the inner north through the public schooling system, health centres, sport and recreational associations, and employment in the city centre, CSIRO and Australian National University. By the same token, all residents in the north depend on major health care facilities (notably Calvary Hospital) located in neighbouring Ginninderra.

Guideline C (ii) requires due consideration of the means of communication and travel within each proposed electorate.

Turner and O'Connor are within walking distance of the city. Hence their focus is on cycle access, footpath safety and road maintenance. They are supplied with frequent bus services. In this dimension they are quite distinct from suburbs such as Gungahlin, Palmerston and Crace where the majority of residents must, of necessity, commute for work, leisure and recreation.

Guideline C (iii) requires due consideration of the physical features and area of each proposed electorate.

Turner as one of the older suburbs in the inner City has physical features which are similar to suburbs such as Reid in terms of their heritage character. Their role in the preservation of these features (such as Haig Park) is necessary for the benefit of all Canberrans.

The suburbs of Turner, Braddon, Lyneham and Dickson have been brought together physically through the Government's housing re-development program. They share similar concerns related to the quality of housing, privacy and the preservation of green space.

The Augmented Commission's revised preference for an expanded seven member seat of Ginninderra will compound rather than help ameliorate the above legitimate

concerns that all Canberra residents have about the limitations posed by the current system to more effectively represent distinct residential communities with differing and unique characteristics in the Assembly.

Gungahlin is not the only growth centre experiencing significant demographic change which, in the interests of fair and just democratic representation, warrant its residents having a more coherent voice in the Assembly. The ACT Government's policy of increasing population density in suburbs which are proximate to the city centre also entails a rapid increase of the voter population in the inner north through a policy of urban infill — and in suburbs such as Turner, Dickson and Braddon, this has recently been accelerated. Population increases in all inner north suburbs are, in the Electoral Council's own estimates, among the highest anywhere in Canberra beyond the newly created subdivisions to the north. Voter numbers are neither static nor declining in these inner north suburbs, unlike in some established suburbs in Molonglo and Brindabella.

Conclusion

The proposed electoral bifurcation of the inner north through the removal of Turner, O'Connor and Lyneham from the seat of Molonglo would diminish the capacity for inner north residents to have a fair voice within the Assembly.

Furthermore, the impact on residents and voters in the suburbs affected by the revised redistribution (approx. 30,000) would be particularly adverse given the very different nature of their interests and concerns facing them — these tend to be more synonymous with issues and concerns relevant to voters and candidates in Central Canberra (Molonglo).

Under the proposed redistribution to result in an augmented Ginninderra, suburbs such as Turner and O'Connor would become a marginal and electorally insignificant pool of votes in that they would find themselves on the periphery of an electorate governed for the most part by entirely different sections of the revised Territory Plan, and divorced from the attendant issues, concerns and interests that the Territory Plan seeks to balance in those areas. Suffice to say, the electoral process is a vital pillar of public accountability in the democratic process of effectively balancing these interests.

Yours sincerely

Anne McMahon
President

From: Bob Edwards
Sent: Thursday, 4 August 2011 11:02 AM
To: Elections
Subject: Redistribution of ACT Electoral boundaries, 2011

To the Augmented ACT Electoral Commission,

I appreciate the difficulty the Commission is facing in coming up with an acceptable distribution of electoral boundaries, considering the constraints of the 3-electorate Hare-Clark system we presently have to work with in the ACT.

However, as a resident of Turner, I am somewhat surprised to learn that the revised proposal is to divide the inner-North of Canberra into two separate electorates. I believe that the residents of the three suburbs of Turner, O'Connor and Lyneham have a lot more to share in common with those of the other inner-North suburbs, such as Dickson, Ainslie, Reid etc. than they do with residents of Gungahlin or Belconnen (in the current Ginniderra electorate).

In the absence of any other more acceptable redistribution proposals, I strongly support the original redistribution proposal of the ACT Electoral Commission, which seems to require the smallest number of changes and would appear to have the longest viability into the future, key considerations addressed in the ACT Electoral Act.

Sincerely,

Robert Edwards,

From: Alpine Signs
Sent: Thursday, 4 August 2011 11:24 AM
To: Elections
Subject: Proposed Molonglo redistribution

Dear people,

Could I humbly submit that it would be undesirable to split either side of Northbourne Av in the electorate. It is paramount that a community should remain intact, especially an established one, according to the Electoral Commission guidelines

Northbourne does not separate the community, many interests, aspirations and problems are shared and the community interest should be maintained

Yours Sincerely
Colin Handley

From: Smith, Tracey
Sent: Thursday, 4 August 2011 11:45 AM
To: Elections
Subject: Support for Gungahlin suburbs to be in one electorate [SEC=UNCLASSIFIED]

To whom it may concern,

I wish to add my support to the proposal that all Gungahlin suburbs be in the one ACT electorate. I agree with the proposition that appropriate and comprehensive representation of the interests of Gungahlin residents, of which I am one, will be better served by a single electorate.

Kind Regards
Tracey Smith
Forde ACT

From: Angela Arena
Sent: Thursday, 4 August 2011 11:50 AM
To: Elections
Subject: Electoral boundary changes

I support GCC's push to have all of Gungahlin in the one ACT electorate. I think should be kept together and not have representation from two different MLA's.

Regards Angela

Angela Arena
Harrison resident

From: Loris
Sent: Thursday, 4 August 2011 11:52 AM
To: Elections
Subject: Boundaries

As a resident of Gungahlin for the past 7 years I wish to express my support for having all of Gungahlin and Belconnen included in the one electorate and not split. For far too long we have been represented by MLA's who we never see.

Loris Manns JP

From: Kandula, Aswin
Sent: Thursday, 4 August 2011 12:15 PM
To: Elections
Subject: electoral boundary changes

To: ACT Electoral Commission

I support all of Belconnen and Gungahlin are combined into one seven-member Ginninderra electorate.

Kind regards,
Aswin Kandula

From: Dee, Barry
Sent: Thursday, 4 August 2011 12:19 PM
To: Elections
Subject: Electoral Boundary Changes [SEC=UNCLASSIFIED]

I support the proposed Electoral boundary changes for the following reasons; as they better reflect the community of interest within each proposed electorate, including economic, social and regional interest.

As a former President of the Gungahlin Community Council it was difficult to get Molonglo MLAs to attend meetings of the Gungahlin Community Council because of the distance involved, the new proposed Electoral boundary changes should eliminate this problem.

Equal political representation is more than just one vote being as near as possible equal to another vote it has to be practical as well, in other words your representatives have to be readily accessible, which is not the current case.

Barry Dee

From: Shirley Ferguson
Sent: Thursday, 4 August 2011 12:23 PM
To: Elections
Subject: Redistribution of electal boundaries

Dear Sir

I am appalled at the suggestion that the Inner North should be divided as an electorate. The Inner North is a community of people. The electoral act states communities should not be divided by electoral boundaries. I believe this is designed to minimize the impact, and silence the voice of this community. I lived in a rural community in the 1980s where despite have three counselors on the local council, and the alternative community, comprising one third of the population, we were denied a seat, and a voice, by always holding elections separately.

Please reconsider this boundary, the Inner North is a unique part of Canberra, as are all inner areas in cities. It holds a disproportional number of academics, students, and alternative lifestyle people. Give all parts of our Canberra community a voice.

Shirley Ferguson

Shirley Ferguson
Child & Family Psychologist

From: Giulio Zambon
Sent: Thursday, 4 August 2011 12:50 PM
To: Elections
Subject: Submission

Dear Sir/Madam,

I firmly believe that all the suburbs of Gungahlin should belong to the same electorate. In general, I find that the distribution of suburbs into a northern, central, and southern electorates would provide the best possible representation for all residents.

Therefore, I support the redistribution of the electoral boundaries as described in
<http://elections.act.gov.au/page/view/487/title/2011-redistribution>

Sincerely, Giulio Zambon.

From: Joseph Calvo
Sent: Thursday, 4 August 2011 1:56 PM
To: Elections
Subject: Electoral Boundaries

I support the Gungahlin Community Council initiative to have all of Gungahlin in the one electorate.

Yours sincerely,

Joseph Calvo

From:
Sent: Thursday, 4 August 2011 1:24 PM
To: Elections
Subject: Web Form: Contact Form

Web Form: Contact Form

Name Peter Nicholson

Response I own a property at 38 Bluebell Street, O'Connor. I wish to object to the proposed redistribution of the electoral boundaries to move Lyneham, O'Connor and Turner to Ginninderra. I strongly endorse the view expressed in the 2011 Redistribution Committee Report '...that this option would significantly disrupt the community of interests that Lyneham, O'Connor and Turner share with neighbouring (north) Central Canberra suburbs. As the various Central Canberra suburbs were developed and settled much earlier than the suburbs of Belconnen and Gungahlin ... they have much more in common with each other than they do with the suburbs developed more recently ... Lyneham, Turner and O'Connor have much closer connections to the university precinct of Acton, the adjacent City area and the neighbouring suburbs of Braddon, Dickson, Downer and Watson than they do with Belconnen or Gungahlin.'

Furthermore, if the proposal was to proceed, then it should be part of a complete redistribution in the ACT not an isolated change. The creation of a new 7 member electorate should be canvassed Canberra-wide. It has been argued for by only one of Canberra's regions.

Time Submitted Thu, 04 Aug 2011 13:24:08 +1000

From: Lesley Brink
Sent: Thursday, 4 August 2011 2:03 PM
To: Elections
Subject: Electoral Boundary Changes

As a long term resident of Gungahlin, I wish to add my support to the electoral boundary changes as proposed by the Gungahlin Community Council to include all of Gungahlin in one electorate.

Kind regards,
Lesley Brink

From: Peter Rayner
Sent: Thursday, 4 August 2011 3:26 PM
To: Elections
Subject: Proposed electoral redistribution for the ACT

August 4 2011

To whom it may concern

I wish to express my concern at the proposed electoral redistribution for the ACT. I understand the reasoning for this proposal, and another announced previously - the electorate of Molonglo (as it contains Gungahlin) will be too big by the time of the next election in 2012.

The first suggestion was to move 2 suburbs of Gungahlin (Crace and Palmerston) to the Ginninderra electorate. This would have left all of the inner North together, as I feel it should be, as it is a distinct community with common long-standing interests that should be left as one entity in electoral terms if the inner North is not to lose its identity and ethos.

Please reconsider the proposal to split the Inner North in two - down Northbourne Avenue - so that the west side (Turner, O'Connor and Lyneham) joins with Belconnen and Gungahlin to become a 7 member electorate. Splitting a community in two is one of the things that the electoral commission should not do according to its legislation - splitting the inner North in two would divide and challenge the integrity of a currently cohesive, very diverse and vibrant community.

Thank you for your consideration of my concerns.

Yours sincerely
Peter Rayner

From: Shane Marsh
Sent: Thursday, 4 August 2011 6:03 PM
To: Elections
Subject: Submission re Molonglo boundaries
Attachments: Submission2toAEC.doc

Miss Shane Marsh

ACT Electoral Commissioner
Australian Capital Territory Electoral Commission

Dear Sir,

Objection to proposed changes to ACT Legislative Assembly electoral boundaries

I object to the current proposal to move the suburbs of Lyneham, O'Connor and Turner from the electorate of Molonglo to the electorate of Ginninderra.

Section 36 of the ACT Electoral ACT 1992 states that:

*In making a redistribution of electorates, the augmented commission shall
(c) duly consider—*

(i) the community of interests within each proposed electorate, including economic, social and regional interests; and

(ii) the means of communication and travel within each proposed electorate; and

(iii) the physical features and area of each proposed electorate; and

(iv) the boundaries of existing electorates; and

(v) the boundaries of divisions and sections fixed under the Districts Act 2002.

These criteria are plainly intended to help identify **natural communities and groupings of suburbs**, taking account of the physical and social geography of the ACT. The inner-north area of Canberra, i.e. Civic, Campbell, Reid, Ainslie, Braddon, Dickson, Hackett, Acton, Turner, O'Connor and Lyneham, has long been considered to constitute a natural community and grouping of suburbs:

- **Physically**, the inner-north suburbs form a natural group, lying within the geographic basin between Black Mountain, Mount Pleasant, Mount Ainslie, Mount Majura and Lake Burley Griffin. They share a common waterway, Sullivan's Creek, currently being improved by wetlands in O'Connor, Dickson and Lyneham;
- **Historically**, the inner-north suburbs were among the first built in the city of Canberra, sharing health services, education facilities, transport and shopping centres. Children from these suburbs attend schools such as Dickson College, and Lyneham and Campbell High; residents shop in Civic and Dickson; readers use Civic and Dickson libraries; political party branches include residents of a mixture of suburbs rather than only one or two. In recent years, most of these suburbs have undergone some degree of urban renewal, sharing common issues of asbestos removal, multi-storey development and urban in-fill;
- **Demographically**, analysis would almost certainly reveal that residents of Turner, Lyneham, O'Connor have more in common with other residents of Molonglo than they do with residents of Ginninderra, reinforcing the view that their "natural community" lies in Molonglo, not Ginninderra. I strongly suggest that the Commissioner conducts such an analysis as part of a rigorous examination of what the term "community of interests" within each proposed electorate, including economic, social and regional interests" means. I consider that the change proposed will lead to much confusion, especially among older residents of Lyneham, O'Connor and Turner, of which there are many who have lived in the Molonglo electorate since the inception of self-government in 1992;

- In terms of **local political concerns**, there are natural alliances between O'Connor and Braddon, Lyneham and Dickson, Turner and Reid, and Acton and Civic. Residents in these areas share concerns about inner-city infill, traffic and transport arrangements, and health and education provision. Northbourne Avenue serves as the common spine of these suburbs, rather than as a division. Residents share common bike paths and bus routes that cross-cross Northbourne Avenue, rather than staying on one side or the other; they use the Civic cinemas rather than travelling to Belconnen; they swim in Dickson and Civic pools, more often than those at Belconnen or the AIS; they walk around Lake Burley Griffin or up Mount Ainslie rather than Lake Ginninderra; and they shop in Dickson and Civic rather than Belconnen or Gungahlin;
- In terms of **local institutional arrangements**, the inner north's status as a natural community is long established. For example, health workers treat the inner-north as one area and the North Canberra Community Council title speaks for itself. Dickson College's recent fight to stay open serving the community of students from the feeder schools of Lyneham and Campbell High Schools is one example of the inner-north community's common purpose in political decision-making;
- **Socially**, the term "inner north" is known to almost everyone in Canberra; that surely says something. Splitting the suburbs of Lyneham, O'Connor and Turner from the other inner-north suburbs would be artificially dividing what almost all Canberrans know as the inner north. While I am sure the ACT Electoral Commissioner is impartial in his judgement, it is hard not to suspect political motivations could be influencing the outcome of this proposal;
- I suggest that the citizens of Nicholls, Palmerston and Crace have far more in common with the residents of the much newer suburbs of Belconnen, in the electorate of Ginninderra, than do the citizens of Lyneham, Turner and O'Connor;
- In addition, voters have an expectation of a high level of **stability in electoral arrangements**, which originated with the campaign for the Hare-Clark system. Stable boundaries were repeatedly mentioned as a reassurance to the people when deciding the nature of the future electoral system. For example, in the 1991 pamphlet, *How to make your vote really count*, the Hare-Clark Campaign Committee prominently contrasted stable boundaries under the Hare-Clark system with the frequent boundary changes of single-member electorates. In the official case for the Proportional Representation (Hare-Clark) System sent to voters in 1992, the following comments were made in relation to stability:

A voting system should also provide stability: a government with broad support should not be "held to ransom" by parties with a very small share of the primary vote, nor should voters face constantly-changing electoral boundaries.

Under the ACT version of Hare-Clark, a quota of at least 12.5% of the vote will be needed to win a seat; this will exclude parties with very little popular support. Boundaries will seldom change.

It is highly likely that population growth in the Gungahlin area will force further redistributions in the not too distant future. Therefore it is incumbent on the Commission to minimise the extent of the current proposed change, with its inherent confusion and possible reversals for subsequent elections.

I am not a member of any political party. I regard myself as a resident of the inner-north with much more in common with my Ainslie neighbours than the residents of Belconnen or Gungahlin.

Yours sincerely,

Shane Marsh

RECEIVED

- 4 AUG 2011

ACT ELECTORAL
COMMISSION

Dear Sir,

Re: Proposed Molonglo-Ginninderra Electorates Boundary Change

I wish to lodge my strong objection to the proposal of the Augmented ACT Electoral Commission (the 'Commission') to the change of boundary between the Molonglo and Ginninderra electorates as it relates to the the area of Lyneham and O'Connor. The social and political integrity of the Inner North community should not be sacrificed in this way to the interests, legitimate as they may be, of growing suburbs elsewhere.

As a resident of Canberra's Inner North (O'Connor, Lyneham) over many years, it is my experience and belief that the Inner North is a stable and established community with strong intra-communal ties. It is the integral area where I live my personal and communal life. It is an area where communal discourse is also bonded with the ANU and the central city and their residents.

The area around Gungahlin is quite distinct from that of the Inner North. Gungahlin is a rapidly growing area with major differences relating to demography (age structure, family status) and in terms of government, to requirements for physical and social infrastructure provision. The differences also relate to geography: the two areas of Gungahlin and the Inner North are substantially separated by a large area of non-residential uses, including the Mitchell industrial area, the Canberra Racecourse and the Canberra Nature Park.

To propose, as the Commission does, to conjoin electorally the Gungahlin area with that of O'Connor/Lyneham is to seriously impair the representation of residents of the latter, on account of its smaller size relative to Gungahlin, its differing requirements, and its isolation from the rest of the electorate. The proposed change would also seriously damage the integrity of the Inner North community.

In this matter I would like to refer to the Commission's interpretation of of the criteria relating to redistributions set out in Section 36 of the Electoral Act. In the Commission's report *Proposed Redistribution of the ACT into Electorates for the Legislative Assembly* (2011), the Commission states (page 11) that it has a 'requirement' to be 'within +/- 5% of the quota at the time of the 2012 election'. I do not believe that this is a correct interpretation of the Act. According to Section 36(a) the duty on the Commission is to 'ensure' that the number of electors is within +/- 10% of the quota. This is the requirement. According to Section 36(b) the Commission is then charged, within these bounds, to 'endeavour to ensure' i.e. to do the best to ensure, in accordance with the criteria set out in Section 36(c), that the number of electors is within +/- 5% of the quota. The Act requires the +/- 10% figure, it does not require the +/- 5% figure. To adopt the latter as the requirement, as the Commission appears to do, would be to render Section 36(a) of the Act redundant. I would therefore contend that within the requirement of +/- 10% the Act provides sufficient flexibility for the Commission to satisfy the wishes both of the Inner North community and of the Gungahlin community with regard to numbers of electors, without doing the serious damage to the Inner North community that the Commission currently intends.

Yours sincerely,



C.L. Nobbs

From: Miles Boak
Sent: Thursday, 4 August 2011 7:32 PM
To: Elections
Subject: Electorate boundary change Molonglo and Ginninderra Electorates
Attachments: Beale.docx

Dear Mr Beale

Attached is the Downer Community Association submission on the electorate change

Miles Boak

Convener of Downer Community Association

Mr Roger Beale AO
Chairperson
ACT Electoral Commission

Dear Mr Beale

Re: New boundaries for the electorate of Molonglo

The Downer Community Association understands the requirement for examining electorate boundaries but we strongly objects to the proposed move of the suburbs of Turner, Lyneham and O'Connor from the electorate of Molonglo to Ginninderra.

This move appears to have no rationale except political expediency and strikes at the heart of the cohesion of North Canberra. North Canberra suburbs have been an "entity" since Canberra's inception and the time of the Walter Burley Griffin Plan.

We consider the integrity of North Canberra part of the electorate of Molonglo is threatened by such a move. This part of the electorate represents Canberra's historical core, especially in the older suburbs. In our opinion the community of interests of Turner, Lyneham and O'Connor best matches those of the electorate of Molonglo rather than those of Ginninderra. The proposed move is inconsistent with Canberra Plan that treats the 7km radius of the city centre as specific planning area that should be kept together.

We suggest the radical step of reducing the number of representatives in Molonglo needs further consideration.

The Downer Community Association would prefer a system where all electorates are treated equitably rather than adopt a boundaries that have no relevance to obvious geographic divisions of the territory.

Yours sincerely

Miles Boak
Convener
Downer Community Association

From: Felix
Sent: Thursday, 4 August 2011 8:35 PM
To: Elections
Cc:

Subject: OBJECTION TO NEW PROPOSED 2011 ELECTORATE REDISTRIBUTION
Attachments: NCCC Objection to 2011 Electorate Redistribution.doc

Please accept the attached objection on behalf of the North Canberra Community Council

Felix MacNeill



North Canberra Community Council Inc. (NCCC)

Box 396 P.O. Dickson, 2602

ABN 71 962 447 215

ACT Electoral Commission
Ground floor, North Building
Civic Square, London Circuit
CANBERRA CITY ACT 2601
Postal: PO Box 272, CIVIC SQUARE ACT 2608
Email: elections@act.gov.au

OBJECTION TO NEW PROPOSED 2011 ELECTORATE REDISTRIBUTION

The North Canberra Community Council (NCCC) appreciates the opportunity that the 2011 Augmented Electoral Commission has provided in seeking the community's views on its Proposed Redistribution of 5 July 2011, which outlines its decision to propose major changes to the electoral boundaries for the ACT.

The NCCC agrees with the Augmented Commission that its proposal differs significantly from the 2011 Redistribution Committee's proposal of 5 May 2011. The NCCC must therefore object to the 2011 Augmented Electoral Commission's Proposed Redistribution of 5 July 2011. This objection is due to this proposed redistribution being less compliant with the *Electoral Act 1992* (the Act) than is the 2011 Redistribution Committee's proposal of 5 May 2011.

The NCCC is particularly concerned with the proposal to move the Inner North suburbs of Lyneham, O'Connor and Turner from the electorate of Molonglo to the electorate of Ginninderra. In doing so, the 2011 Augmented Commission has applied Section 36(c) of the Act significantly differently from the 2011 Redistribution Committee, the 2007 Augmented Commission, the 2007 Redistribution Committee and the bodies involved in the 2003 and 2000 redistributions.

To elaborate, Section 36(c) of the Act states that in making a redistribution of electorates, the augmented commission shall duly consider—

- (i) the community of interests within each proposed electorate, including economic, social and regional interests; and
- (ii) the means of communication and travel within each proposed electorate; and
- (iii) the physical features and area of each proposed electorate; and
- (iv) the boundaries of existing electorates; and
- (v) the boundaries of divisions and sections fixed under the *Districts Act 2002*.

In moving Lyneham, O'Connor and Turner from Molonglo to Ginninderra, the NCCC submits that the Augmented Committee's proposed redistribution violates all of Section 36 except for Section 36(c)(v). In fact, the redistribution goes against conclusions from previous redistributions as recently as 2007. For example, the Augmented Commission's Final Redistribution Report of 2007 (the previous redistribution) states emphatically on page 59:

transferring (to Ginninderra) all three of these suburbs (Lyneham, O'Connor, Turner) would further disrupt the communities of interests these suburbs share with the adjacent north Canberra suburbs.

For these reasons, and the fact that this would represent a substantial change to the electoral boundaries, the Committee considered that neither of these options was very suitable.

There have been no significant changes in the Inner North since 2007, so even by the Augmented Commission's standards the proposed redistribution violates Section 36(c)(i) and 36 (c)(iv).

The 2007 Final Report also states on the same page, in the scenario of transferring Lyneham and O'Connor to Ginninderra, that:

The Committee considered that Lyneham and O'Connor share significant communities of interests with the adjacent north Canberra suburbs, such as Watson, Downer, Dickson and Turner. These suburbs were developed at similar times and share similar socioeconomic characteristics, as well as transport links, schools and shopping and employment facilities. While Lyneham and O'Connor share some interests with the adjacent Belconnen suburbs, particularly O'Connor ridge, the new Gungahlin Drive extension forms a natural barrier between them. The Committee considers that Lyneham and O'Connor have much stronger links with the adjacent north Canberra suburbs.

Duplicating the Gungahlin Drive extension only increases the barrier, which is certainly greater than barriers of other roads such as Northbourne Avenue. The 2011 Redistribution Committee's Report also discusses the option of moving Lyneham, O'Connor and Turner to Ginninderra and concludes on page 19:

The Committee is also concerned that this option would significantly disrupt the community of interests that Lyneham, O'Connor and Turner share with neighbouring (north) Central Canberra suburbs. As the various Central Canberra suburbs were developed and settled much earlier than the suburbs of Belconnen and Gungahlin, it is arguable they have much more in common with each other than they do with the suburbs developed more recently. For example, it could be argued that Lyneham, Turner and O'Connor have much closer connections to the university precinct of Acton, the adjacent City area and the neighbouring suburbs of Braddon, Dickson, Downer and Watson than they do with Belconnen or Gungahlin.

For the above reasons, the Committee concludes that it could not propose this change to the existing boundaries.

The NCCC submits that the descriptions provided above show that the 2011 Augmented Commission's proposal, without even considering existing electoral boundaries, violates Section 36(c)(i), (ii) and (iii) of the Act. It could also be argued that the Inner North suburbs,

including Lyneham, O'Connor and Turner, have more issues in common with Inner South Canberra suburbs due to similar periods and types of development.

However, the 2011 Augmented Commission's report paradoxically tries to claim that barriers with Belconnen such as O'Connor Ridge are actually links, clearly contradicting the earlier report by the Augmented Commission itself. The NCCC therefore supports the 2007 and 2011 descriptions above as accurate and questions contradicting statements in the 2011 Augmented Commission's report.

All of the strong evidence above, provided by the Augmented Commission and Redistribution Committee themselves, begs the question of why now make such a dramatic change in electoral boundaries that is so at odds with Section 36(c) of the Act?

There has been strong lobbying now and in the past by the Gungahlin Community Council and Gungahlin residents to include all of Gungahlin in a single electorate. This has ranged from resisting the move of suburbs from Molonglo to Ginninderra to suggesting more far reaching changes. The 2007 Augmented Commission report (page 28) noted that "only representatives and/or residents of Gungahlin have argued for changing the location of the 7 member electorate." The location of the 7-member electorate has therefore not been a Canberra-wide issue.

However, besides Gungahlin, the issue of split electorates is one that Woden already faces (and the Woden Valley Community Council has opposed), and NCCC notes that the Weston Creek Community Council provided a submission requesting that Weston Creek not be split in any redistribution. And of course, in this objection the NCCC is opposing splitting Inner North suburbs between electorates.

Interestingly enough, the 2011 Augmented Commission's report (page 12) decided not to change the Brindabella-Molonglo boundary (which splits Woden) because Woden Valley suburbs have been included in Brindabella since its inception and that the boundaries of existing electorates are a factor to be given weight under Section 36 of the Act. If the same logic were to be applied to the Ginninderra-Molonglo boundary, this would favour the 2011 Redistribution Committee's original proposal to move just the suburbs of Palmerston and Crace to Ginninderra, following precedent from previous redistributions.

While strong growth of population of Gungahlin is what originally began Gungahlin's progressive splitting between electorates, it has also made the option of combining all of Gungahlin with Belconnen into a 7-member electorate closer to reality. However, the population of Gungahlin is not quite large enough to accomplish this. Even the 2011 Redistribution Committee's report notes in page 16 that because Gungahlin and Belconnen combined are not yet large enough to constitute a 7-member electorate, "any attempt to avoid splitting Gungahlin must of necessity split another district." For some reason the Augmented Commission has decided to make the shift now, but the NCCC argues that the Augmented Commission has jumped the gun

and that it is not yet time to make such a dramatic shift, especially if it is at the price of splitting already established and linked communities.

The NCCC notes that the Augmented Electoral Commission has decided to include the new district of Molonglo Valley in the electorate of Molonglo. As Molonglo Valley develops, the increase in population of the Molonglo electorate will accelerate the movement of Gungahlin suburbs from Molonglo into Ginninderra and can make a 7-member Ginninderra including all of Belconnen and Gungahlin a reality in the near future. And this can happen without having to resort to ripping out suburbs from other areas to make up for the difference in electors.

It would be a subjective argument say whose community interests outweighs whose, but if the Augmented Commission weighs both Gungahlin's and the Inner North's interests at the same value, Section 36(c)(i), (ii) and (iii) would cancel each other out. The only portion of Section 36 that differ between the 2011 proposals is Section 36(c)(iv), the boundaries of existing electorates. The only conclusion one can make therefore is to follow the 2011 Redistribution Committee's original proposal to move the suburbs of Palmerston and Crace to Ginninderra.

The NCCC therefore believes that the Augmented Commission should take a long-term perspective and aim for the ultimate goal of combining Gungahlin suburbs into the same electorate while following Section 36 of the Act. This need not involve a drastic change in trajectory from previous redistributions.

The NCCC appreciates the opportunity to comment on the 2011 Augmented Commission's proposal, as it differs significantly from the 2011 Redistribution Committee's earlier proposal. In conclusion, given the evidence provided above, the NCCC argues that the redistribution option that is more compliant with the *Electoral Act 1992* is the 2011 Redistribution Committee's original proposal of 5 May 2011. The NCCC therefore requests that this redistribution option be followed.

North Canberra Community Council

4 August 2011

From: Barbara Chevalier
Sent: Thursday, 4 August 2011 8:45 PM
To: Elections
Subject: B.Chevalier: Submission to AEC opposing move of Lyneham, O'Connor and Turner from Molonglo electorate
Attachments: Submission to AEC BChevalier 4.8.11.pdf

I attach my **objections to proposed changes to ACT Legislative Assembly electoral boundaries.**

I have lived in O'Connor since 1975 and oppose the proposal to move the suburbs of Lyneham, O'Connor and Turner from the electorate of Molonglo to the electorate of Ginninderra. Of the two proposals under consideration, **I support the one that maintains the integrity of Canberra's Inner North**, in which Crace and Palmerston would be transferred from Molonglo to Ginninderra.

I make supporting points in the attached document.

Sincerely,

Barbara Chevalier

Objection to proposed changes to ACT Legislative Assembly electoral boundaries

I have lived in O'Connor since 1975 and oppose the proposal to move the suburbs of Lyneham, O'Connor and Turner from the electorate of Molonglo to the electorate of Ginninderra. Of the two proposals under consideration, **I support the one that maintains the integrity of Canberra's Inner North**, in which Crace and Palmerston would be transferred from Molonglo to Ginninderra.

I make the following points in brief, in the knowledge that others have made similar points providing detailed evidence and argument.

1. The inner-north area of Canberra—Civic, Campbell, Reid, Ainslie, Braddon, Dickson, Hackett, Acton, Turner, O'Connor and Lyneham—has formed a natural family of suburbs, socially, geographically and historically. Lyneham, O'Connor and Turner (LOT) are quintessentially "inner north" in local sense of place.
2. I seriously wonder what the impact on voting patterns of splitting LOT from the rest of the inner north will be – in particular on the number of Greens MLAs in the ACT Legislative Assembly. Potentially splitting the Green vote is an issue of considerable import for a Sustainable Canberra, and not merely a matter of numbers or political naivety. Are there any vested political interests in play?
3. Given that future growth will require further redistributions, it makes more sense for newer suburbs to coalesce as they grow than splitting older suburban constellations – both to minimize changes, to leave the existing aggregations intact, and to maintain stability in boundaries and electoral arrangements.
4. Older and newer suburbs will have different ages of infrastructure and compositions of population which in turn result in different 'communities of interest' with respect to natural, urban and social planning.

Sincerely
Barbara Chevalier.

From: Russell Orrell
Sent: Thursday, 4 August 2011 4:55 PM
To: Elections
Subject: Gungahlin electoral boundaries change

to whom it may concern

I implore you to consider keeping gungahlin in its geographical electoral boundary as the entire community out here share the same local political/social issues and would not get local representation .Thank you Dr Russell Orrell

From: Barbara Meyer
Sent: Thursday, 4 August 2011 5:53 PM
To: Elections
Subject: electoral redistribution

Dear Electoral Commissioner,

I object to the proposed re-distribution, in particular to the hiving off of O'Connor and Lyneham to be part of Gungahlin. O'Connor and Lyneham should remain part of a North Canberra electorate. I appreciate that boundaries must change with changes in population but there are practical problems in splitting up a coherent area such as the old North Canberra. I do not feel that members representing Belconnen and Gungahlin will give enough regard to the character of this area, where I have lived for 32 years.

Yours sincerely

Barbara Meyer

From: Barry MacDonald
Sent: Thursday, 4 August 2011 7:06 PM
To: Elections
Cc: 'Gungahlin Community Council'
Subject: Support for Gungahlin staying in the on electorate.

I would like to register my support for not having Gungahlin split into two electorates.

Thank you
Barry MacDonald

From: Jeremy Tager
Sent: Thursday, 4 August 2011 8:59 PM
To: Elections
Subject: redistribution

I am writing in regard to the proposed redistribution in the ACT. I live in O'Connor do not, in any way, support the inclusion of O'Connor in the Belconnen electorate. This is an entirely artificial separation from other inner north suburbs and an entirely artificial connection to Belconnen. These inner northern suburbs have shared interests, histories, and facilities. I don't own a car and although I use the bicycle path to Belconnen occasionally, I tend to shop and move within these inner north suburbs.

I urge the commission not to make this change.

Sincerely yours
Jeremy Tager

From:
Sent: Thursday, 4 August 2011 9:24 PM
To: Elections
Subject: ACT electoral boundaries

Please let it be known that Paul and Julie Ballard of Amaroo, ACT support the claim that all Gungahlin suburbs be within the one electorate.

Paul Ballard
Julie Ballard

From: Kay de Vogel
Sent: Thursday, 4 August 2011 9:40 PM
To: Elections
Subject: Electoral boundary changes for the ACT

Dear Commissioners

I would like to thank the Commission for giving us the opportunity to respond to the proposals for changing the electoral boundaries in the ACT, and allowing us extra time to do this.

I feel strongly that the integrity of Canberra's Inner North, as it currently stands, must be retained.

The inner North has been a community for many decades, sees itself as community and has a vibrant Northside Community Fair. We see ourselves as "Inner North" residents, and this definitely includes Turner, O'Connor and Lyneham. Also, Turner, Lyneham and O'Connor have far more in common with the rest of the inner north than they do with Gungahlin - the age of the suburbs, their housing styles, the interaction of the residents being just a few examples of this.

Splitting the Inner North between two electorates seems unnatural and will cause confusion and unhappiness, and so I suggest that an alternative boundary change be made.

Sincerely,
Kay de Vogel

From: Janice hodgson
Sent: Friday, 5 August 2011 8:29 AM
To: Elections
Subject: Electoral boundaries

As a resident in Nicholls, I once again ask that *all Gungahlin be in the same electorate!* This is the sensible way to go - to give us a greater sense of community, for us to feel we "belong" with our neighbours!

Thank you
Fred and Janice Hodgson

From: Kevin Cox
Sent: Friday, 5 August 2011 7:18 AM
To: Elections
Subject: Electoral Boundary Changes

In the past new town areas of Belconnen and Tuggeranong were always in the same electorate. This is right and proper as new areas have the most infrastructure development and have the most need for a single representation. Gungahlin has not had this privilege and has been divided. Gungahlin should be one electorate. While it is unfortunate that other older areas are divided the impact of the division is not as great as it is in new areas. The boundaries should be changed so that Gungahlin is in the one electorate and so that as new suburbs can be more easily accommodated within the same electorate.

Kevin Cox

From: Troy Knowler
Sent: Thursday, 4 August 2011 9:49 PM
To: Elections
Subject: Support for proposed Gungahlin Electoral Boundary Changes

To whom it may concern,

I support Gungahlin Community Council's push to have all of Gungahlin in the one ACT Electorate.

Thank you,

Troy Knowler
Ngunnawal Resident

From: Gordon McAllister
Sent: Thursday, 4 August 2011 9:59 PM
To: Elections
Subject: objection to revised boundary redistribution

Hi Elections ACT

I wish to object to the revised proposal to change the boundaries of the ACT electorates which primarily makes Ginninderra the 7 member electorate. I believe that the original proposal to just make minor changes to the boundary between the Molonglo and Ginninderra electorates to be preferable.

It is quite odd that the Electoral Commission wants to solve concerns raised by a small number of Gungahlin residents to a relatively minor excision from the Molonglo electorate into Ginninderra by making a much more significant split in electorates through North Canberra.

It is also particularly odd to make a major adjustment in the numbers of members in Ginninderra and Molonglo relatively close to the next ACT election and to cause disruption to the work of the existing MLAs who may find themselves in new electorates through no fault of their own.

I am a resident of Lyneham and feel strongly that the inner North of Canberra should be regarded as a united community. The inner North is one of the oldest developed areas of Canberra and has a long history of interaction between its suburbs and with the commercial centres of Civic and Dickson. Black Mountain/O'Connor Ridge and Mount Ainslie/Mount Majura form natural boundaries to the inner North and Sullivans Creek winding through the valley to the lake provides a uniting natural feature.

As a Lyneham resident, and knowing many other people in this area, I know that we have much more affinity to the inner North than to Belconnen. I have few reasons to travel to Belconnen whereas I travel around the inner North daily for work, shopping, recreation and visiting friends. I am aware of many people who have chosen to stay in the inner North, even though they may have moved houses a number of times, because they like the community and location here.

I can understand the concerns of some Gungahlin residents to having their community split into different electorates, but it has to be admitted that the Gungahlin community is young and still in the process of formation and the disruption to their community caused by the boundary change there would be much less than a boundary change in the inner North. Indeed, the suburb of Crace has very few people living in it at present so would be hardly affected by the originally proposed change.

I accept that electoral boundaries will almost always divide some community or other, but I thought that the Commission was obliged to make the minimum necessary changes to keep the electorates within their quotas. The original proposal did that and should be maintained.

Yours sincerely

Gordon McAllister

From: The Newtons
Sent: Thursday, 4 August 2011 10:54 PM
To: Elections
Subject: One Electorate

We refer to the current review of electoral boundaries in the ACT and have one, logical request - Gungahlin and Belconnen have to be in the one Electorate. Anything different is so unrepresentative and so unfair to residents as to be bordering on criminally stupid.

We in the northern area of the ACT have different needs and priorities to constituents in other areas, and those other areas have their own needs and priorities. To be effective representatives, elected members need to be able to focus their priorities in a clear single area, and that isn't possible with a different configuration of the boundaries, and it's not possible with the totally artificial and disjointed configuration proposed or one with an elongated shape that cuts across different, identifiable communities groupings.

Garry & Jo Newton
Residents of Palmerston for 19 years and Belconnen for 10 years before that.

From: Jodie Pipkorn
Sent: Friday, 5 August 2011 10:33 AM
To: Elections
Subject: ACT Electoral Boundary proposed changes - submission

To whom it may concern

Thank you for the opportunity to make further submissions on the redistribution of the ACT Electoral Boundaries. I acknowledge the difficulty the Commission faces in making an equitable decision. However, **Lyneham and O'Connor belong in the 'inner-city/Canberra central' boundary** and following are my key points as to why:

Separating O'Connor/Lyneham from inner-city will undermine densification

Although the Commission has accepted that Gungahlin Drive is a natural barrier between O'Connor/Lyneham and that they have stronger links with the adjacent north Canberra suburbs, I completely disagree. The culture of both O'Connor and Lyneham is very much connected to the inner city. These suburbs, particularly with their increasing densities, are increasingly becoming more connected to the city and to separate them in the electoral boundaries would completely undermine the densification that is occurring.

O'Connor and Lyneham are very much connected to the inner city

The issues faced by O'Connor and Lyneham are much more closely related to the changes taking place in the city, not related to the newer suburbs. These suburbs are well-established and are very much focused on increasing densities. This is very different to what Belconnen and Gungahlin are dealing with. In addition, the greater densification of these areas increases the connection within the community.

Decisions now need to consider longer term strategic directions

Changing electoral boundaries now should be considering future growth plans. Lyneham and O'Connor are increasing densities, along with other outer areas like Molonglo. Consideration now should be given to increasing electorates to 7-member electorates rather than 5 and, if decided that these changes should happen in the future, then any solutions now should be looking for the least disruption to residents - ie. moving the low population areas like Crace and Palmerston at this stage and communicating the future plans which will potentially move them back at some point. This would be consistent with the Crace and Palmerston dealing with similar issues to that of Belconnen or Gungahlin and the fact that both of these areas are relatively new and connections to place are not as deep-seeded as the connections to place that inner areas have.

Regards

Jodie Pipkorn

From: John Symond
Sent: Friday, 5 August 2011 11:33 AM
To: Elections
Subject: A submission concerning the proposed changes to ACT Electoral Boundaries
Attachments: Friends of O'Connor ACT Electoral Commissioner.doc; ATT00001.htm

I submit the attached letter on behalf of an ACT registered association.

John Symond
Chairman of the Friends of O'Connor Association Inc.

Friends of O'Connor
ACT Association Number A05026

ACT Electoral Commissioner
Australian Capital Territory Electoral Commission

Dear Sir or Madam,

**An objection to proposed changes to
ACT Legislative Assembly electoral boundaries**

Our association represents the interests of local residents and business people.

The 'Friends of O'Connor thank the Augmented Commission for the opportunity to make a submission, at this late stage, and we acknowledge the difficulty the Commission faces in making an equitable decision. The Commission is on record as having said:

"any attempt to avoid splitting Gungahlin must of necessity split another district."

We submit the following points regarding the current proposal to move Lyneham, O'Connor and Turner (LOT) into an enlarged Ginninderra electorate:

1. The creation of a new seven member electorate should be canvassed Canberra-wide. It has been argued for by only one of Canberra's regions - Gungahlin.

[The 2007 Augmented Commission report (page 28) noted that "only representatives and/or residents of Gungahlin have argued for changing the location of the 7 member electorate." The location of the 7-member electorate has therefore not been a Canberra-wide issue.]

2. The Commission has accepted that there is a community of interest with 'adjacent north Canberra suburbs', and has stated earlier.

"While Lyneham and O'Connor share some interests with the adjacent Belconnen suburbs, particularly O'Connor ridge, the new Gungahlin Drive extension forms a natural barrier between them. The Committee considers that Lyneham and O'Connor have much stronger links with the adjacent north Canberra suburbs."

This is even more true of Turner.

3. The disruption of a long established community:
The 2011 Redistribution Committee's Report (aka 'the first report') discussed the option of moving Lyneham, O'Connor and Turner (LOT) to Ginninderra and concluded on page 19:

The Committee is also concerned that this option would significantly disrupt the community of interests that Lyneham, O'Connor and Turner share with neighbouring (north) Central Canberra suburbs. As the various Central Canberra suburbs were developed and settled much earlier than the suburbs of Belconnen and Gungahlin, it is arguable they have much more in common with each other than they do with the suburbs developed more recently. For example, it could be argued that Lyneham, Turner and O'Connor have much closer connections to the university precinct of Acton, the adjacent City area and the neighbouring suburbs of Braddon, Dickson, Downer and Watson than they do with Belconnen or Gungahlin.

However, the 2011 Augmented Commission's report (aka the second report) paradoxically claimed that barriers with Belconnen such as O'Connor Ridge are actually links, clearly contradicting the earlier report by the Augmented Commission itself.

Northbourne Avenue is an insignificant barrier between the suburbs of the Inner North and has no intrinsic merit as an electoral boundary, whereas O'Connor Ridge, far from being a *connection* between LOT and Belconnen, is in fact a *barrier*.

4. Densification and urban in-fill.

The planned densification of population along Northbourne Avenue will create, rather than diminish, community between both sides of Northbourne Avenue. The expected densification of population elsewhere in the inner north creates a distinct set of issues and interests different from issues in other more recently developed suburbs.

5. Moving the 'LOT' suburbs is unnecessarily disruptive and may need to be reversed later.

The changes in the second proposal would lead to a major change in boundaries and would substantially disrupt residents in both Gungahlin and the Inner North. This is not necessary or desirable. In addition, Gungahlin's expected growth might result in the three 'LOT' suburbs in Inner North, being moved back to Molonglo in the 2016 redistribution.

Future population trends will require more redistributions, and the correct course for 2011 is to make the *minimal changes* suggested in the Commissions first proposal.

6. The 'Friends of O'Connor' therefore submit that the least disruption to voters and to community loyalties would be achieved by moving Crace and Palmerston as originally proposed. Crace has a population of less than 200. This would be consistent with the clearly desirable continued progression towards the electoral union of Gungahlin with Belconnen.

7. We note our concern that the means of public notification have been inadequate, thus inhibiting public debate and the democratic process, and giving an unreasonable advantage to those who have been made aware, by good fortune, of the redistribution

issue earlier in the process. We request an exact description of the means by which the public was notified.

8. We note that the legal requirement for three electorates, with 7,5,5 members, and geographical contiguity, greatly constrains the decision and makes the disappointment of some voters inevitable.

We therefore believe that the interests of Canberra would be better served by three electorates of seven members each, which we understand would require legislation both at the local and the federal level. We would be interested to know, from the Commission, whether that solution would make the issue of boundaries less contentious.

Yours sincerely,

John Symond
Chairman, The Friends of O'Connor Inc

From: Maryanne McKay
Sent: Friday, 5 August 2011 2:22 PM
To: Elections
Subject: Electoral boundaries redistribution

Good afternoon

I write to express my deep concern regarding the proposed electoral boundaries redistribution that would see my local community of the Inner North divided across different electorates.

I identify strongly as a community member of the Inner North. I have lived at various addresses in the Inner North over a 20-year period, including in my current home in Lyneham for over 10 years. I feel a great sense of connectedness and belonging to my local community; most of my friends live in the Inner North, most of the amenities I use are in the Inner North, and there is a strong sense of cohesion in our community.

Under the current proposal, there would be a disconnect between the local services I access and where I live; my local shops, post office, library and swimming pool, which are all just a few minutes walk away from home, would be in a different electorate. But most importantly, the shared interests, issues and priorities of the Inner North community would be divided.

While I sympathise with the desire of Gungahlin residents to be part of a common electorate, I feel that this shouldn't come at the expense of splitting an already well-established community. As Gungahlin is such a fast-growing and expanding region, I imagine that in the redistribution for the election after next, Gungahlin may be sufficiently populated to be transferred in its entirety to Ginninderra, in which case Lyneham, O'Connor and Turner could very well be returned to Molonglo, posing another significant disruption for residents in these suburbs and the wider Inner North community.

I implore the Commission to reconsider the current proposal and keep the Inner North community together and not divide us across different electorates.

Kind regards
Maryanne McKay

From: Neil Parsons
Sent: Friday, 5 August 2011 11:35 AM
To: Elections
Subject: Submission re Electoral Redistribution
Attachments: Submission re Electoral Redistribution from Neil Parsons.pdf

Dear Mr Green,
Please accept my attached submission concerning the proposal to redistribute the ACT electorates.
Yours sincerely
Neil Parsons

Mr Phillip Green
ACT Electoral Commissioner,
ACT Electoral Commission
P O Box 272
Civic Square ACT 2601

3 August 2011

Dear Mr Green,

RE: Redistribution of the ACT Electorates

I am a resident of Turner and have recently become aware of the ACT Electoral Commission's Proposed Redistribution of the ACT's electorates. I would like object to the radical extent of the proposed electoral redistribution and support the Redistribution Committee's original proposal for the retention of a seven member Molonglo seat through the transfer of Crace and Palmerston into the seat of Ginninderra. This would be a better outcome for the ACT as a whole as it would group voters with similar concerns and interests and who live near each other to be in the same electorates without the major and unprecedented rearrangement currently proposed.

The reasons in support of this position are set out below using the Commission guidelines that must be considered in electoral distributions.

Guideline (i) specifies the need for due consideration for the community of interests within each proposed electorate including economic, social and regional interests.

Turner, Lyneham and O'Connor share a very similar history and interests with the other inner north and inner south suburbs, most of which were built and developed between the 1920s and the 1960s. They face the same infrastructure and redevelopment issues, have similar demographics and have a focus on the Civic Centre. In contrast Belconnen and Gungahlin suburbs are much newer with more recently built infrastructure, younger people and families and which are focussed on their respective town centres.

A particularly important and shared challenge facing the suburbs on both sides of Northbourne Avenue is the increased building density that will occur in the next decade or two. This is leading to fundamental change in these communities and this is an important interest that should not be divided down the middle.

Guideline (ii) requires due consideration of the means of communication and travel within each proposed electorate.

The argument that Northbourne Avenue is a significant divider between them is just not true – it is just a road. On the other hand the closest point

between Turner and any part of Belconnen and Gungahlin is over 2.5 kilometres! The inner north suburbs are within walking or cycling distance of Civic and Dickson and these are the centres that the inner north residents predominately use. The same is true of the recreational, educational and sporting facilities with residents predominately using those that are within the inner north.

Guideline (iii) requires due consideration of the physical features and area of each proposed electorate.

Turner, O'Connor and Lyneham along with the other inner north suburbs are located in the plain that is surrounded by Mount Ainslie and Mount Majura in the east and Black Mountain and O'Connor Ridge to the west. This is a natural physical grouping of suburbs which would ideally be kept together. An example of the close physical link between the Turner and Braddon is Haig Park which transverses across both suburbs. Last year the ACT Government held a joint community consultation between the two suburbs to discuss the proposed Master Plan for the park.

The ACT Government is pursuing a policy of increased population density in the inner north and these suburbs are facing large and rapid demographic and infrastructure change. The voters in this area deserve a coherent and unified voice in the Assembly representing their interests during this period of proposed significant change. The proposed division of the inner north into two different electorates, in both of which they will represent a minor part, will significantly reduce the proper representation they will receive and are entitled to. The interests that Turner, Lyneham and O'Connor have in common with the other inner north suburbs will be swamped by the very different Belconnen and Gungahlin concerns. The other inner north suburbs will also suffer as these common interests will have much less impact on the Molonglo representatives in the Legislative Assembly. I urge the Commission to adopt the Redistributions Committee's original and very sensible proposal which results in the Molonglo electorate staying as the 7 seat electorate and which allows the inner north to be properly represented.

Yours sincerely



Neil Parsons

From: Margaret Evans
Sent: Friday, 5 August 2011 3:01 PM
To: Elections
Subject: ACT Electoral Boundary proposed changes

Objection to proposed changes to ACT Legislative Assembly electoral boundaries
To whom it may concern:

I believe it is important to keep the Northside suburbs together in one electorate.

The inhabitants do share a lot in terms of historical status and development, social outlook, shared concerns, have proven they can work together to solve problems, and are regarded as an entity by the rest of Canberrans (I should know, I live in the South!)

It is fairly hard for any area to establish an identity in Canberra, the city being so spread out, with a largely middle-class, educated populace and often with no great difference between one suburb and the next, so please help to preserve the identity of the 'Northside' by keeping it as one electorate.

Margaret Evans

Kambah

From: Tristan Viscarra Rossel
Sent: Friday, 5 August 2011 11:38 AM
To: Elections
Subject: Fw: Objection to proposed changes to ACT Legislative Assembly electoral boundaries

Dear Sir/Madam,

Objection to proposed changes to ACT Legislative Assembly electoral boundaries

I object to the current proposal to move the suburbs of Lyneham, O'Connor and Turner from the electorate of Molonglo to the electorate of Ginninderra.

Section 36 of the ACT Electoral ACT 1992 states that:

*In making a redistribution of electorates, the augmented commission shall ...
(c) duly consider—*

(i) the community of interests within each proposed electorate, including economic, social and regional interests; and

(ii) the means of communication and travel within each proposed electorate; and

(iii) the physical features and area of each proposed electorate; and

(iv) the boundaries of existing electorates; and

(v) the boundaries of divisions and sections fixed under the Districts Act 2002.

These criteria are plainly intended to help identify **natural communities and groupings of suburbs**, taking account of the physical and social geography of the ACT. The inner north area of Canberra (i.e. Civic, Campbell, Reid, Ainslie, Braddon, Dickson, Hackett, Acton, Turner, O'Connor and Lyneham), has long been considered to constitute a natural community and grouping of suburbs:

- **Physically** - the inner north suburbs form a natural group, lying within the geographic basin between Black Mountain, Mount Pleasant, Mount Ainslie, Mount Majura and Lake Burley Griffin. They share a common waterway, Sullivan's Creek, currently being improved by wetlands in O'Connor, Dickson and Lyneham.
- **Historically** - the inner north suburbs were among the first built in the city of Canberra, sharing health services, education facilities, transport and shopping centres. Children from these suburbs attend schools such as Dickson College, and Lyneham and Campbell High; residents shop in Civic and Dickson; readers use Civic and Dickson libraries; political party branches include residents of a mixture of suburbs rather than only one or two. In recent years, most of these suburbs have undergone some degree of urban renewal, sharing common issues of asbestos removal, multi-storey development and urban in-fill.
- **Demographically** - analysis would almost certainly reveal that residents of Turner, Lyneham, O'Connor have more in common with other residents of Molonglo than they do with residents of Ginninderra, reinforcing the view that their 'natural community' lies in Molonglo, not Ginninderra. I strongly suggest that the Commissioner conducts such an analysis as part of a rigorous examination of what the term 'community of interests' means within each proposed electorate, including 'economic, social and regional interests'. I consider that the change proposed will lead to much confusion, especially among older residents of Lyneham, O'Connor and Turner, of which there are many who have lived in the Molonglo electorate since the inception of self government in 1992.
- **Local political concerns** - there are natural alliances between O'Connor and Braddon, Lyneham and Dickson, Turner and Reid, and Acton and Civic. Residents in these areas share concerns about inner city infill, traffic and transport arrangements, and health and education provision. Northbourne Avenue serves as the common spine of these suburbs, rather than as a division. Residents share common bike paths and bus routes that criss-

cross Northbourne Avenue, rather than staying on one side or the other; they use the Civic cinemas rather than travelling to Belconnen; they swim in Dickson and Civic pools, more often than those at Belconnen or the AIS; they walk around Lake Burley Griffin or up Mount Ainslie rather than Lake Ginninderra; and they shop in Dickson and Civic rather than Belconnen or Gungahlin.

- **Local institutional arrangements** - the inner north's status as a natural community is long established. For example, health workers treat the inner north as one area and the North Canberra Community Council title speaks for itself. Dickson College's recent fight to stay open serving the community of students from the feeder schools of Lyneham and Campbell High Schools is one example of the inner north community's common purpose in political decision-making.
- **Socially**, the term 'inner north' is known to almost everyone in Canberra; that surely says something. Splitting the suburbs of Lyneham, O'Connor and Turner from the other inner north suburbs would be artificially dividing what almost all Canberrans know as the inner north. While I am sure the ACT Electoral Commissioner is impartial in his judgement, it is hard not to suspect political motivations could be influencing the outcome of this proposal.

I suggest that the citizens of Nicholls, Palmerston and Crace have far more in common with the residents of the much newer suburbs of Belconnen, in the electorate of Ginninderra, than do the citizens of Lyneham, Turner and O'Connor.

In addition, it is highly likely that population growth in the Gungahlin area will force further redistributions in the not too distant future. Therefore it is incumbent on the Commission to minimise the extent of the current proposed change, with its inherent confusion and possible reversals for subsequent elections.

I am not a member of any political party. I regard myself as a resident of the inner north with much more in common with my Ainslie and Dickson neighbours than the residents of Belconnen or Gungahlin.

Yours sincerely,

Tristan Viscarra Rossel
Resident and registered voter
O'Connor ACT

ACT Electoral Commission
Ground floor, North Building
Civic Square, London Circuit
CANBERRA CITY ACT 2601
Postal: PO Box 272, CIVIC SQUARE ACT 2608
Email: elections@act.gov.au

Dear sir or madam,

I appreciate the opportunity that the 2011 Augmented Electoral Commission has provided in seeking the community's views on its Proposed Redistribution of 5 July 2011, which outlines its decision to propose major changes to the electoral boundaries for the ACT.

I support the submission sent to the augmented electoral commission on 4 August 2011 by the North Canberra Community Council and wish to add a personal comment. I believe that the electorate of Molonglo (which includes Gungahlin and the Inner North) should not be split because the electorate of Molonglo provides the bulk of employment for Gungahlin and Gungahlin provides the labour and is a driver for infrastructure to service this employment. Together, we will still be the primary economic drivers in the ACT by the end of the current electoral cycle. Therefore, we are more of a natural fit than is Gungahlin - Belconnen in an expanded Brindabella electorate.

--

Richard Larson

From: Eugene Bajkowski [apbc@netspeed.com.au]
Sent: Friday, 5 August 2011 2:42 PM
To: Elections
Subject: Submission RE: Redistribution of the ACT Electorates

Canberra, 4 August 2011

Mr Phillip Green

ACT Electoral Commissioner,

ACT Electoral Commission

P O Box 272

Civic Square ACT 2601

5 August 2011

Dear Mr Green,

RE: Redistribution of the ACT Electorates

As a 50% co-owner of a property in Turner, ACT (a free-standing house with a backyard at 12 Stawell Street which earlier was the residence of my deceased parents for many years) I wholly and vigorously endorse and support the Submission lodged with you by the Turner Residents Association (TRA) in relation to the ACT Electoral Commission's Proposed Redistribution of the ACT's electorates. I share TRA's grateful acknowledgment of the Electoral Commission's decision to extend the timeframe for receiving Submissions from the public, especially in light of the hitherto very low level of community awareness about, and clear understanding of, the importance of the process and its implications for the democratic process of representation of community views, aspirations and concerns. In particular, and especially, in view of the stunningly radical and unprecedented extent of the proposed electoral redistribution.

I support the Redistribution Committee's sensible original proposal for the retention of a seven member Molonglo seat through the transfer of the suburbs Crace and Palmerston into the seat of Ginninderra. This represents a sensible and equitable balance of interests by the ACT Electoral Commission and also minimises disruption and delivers a welcome measure of certainty to voters, candidates and ACT Legislative Assembly members. .

In support of this view I now turn to the guidelines which the Committee and Commission must duly consider.

Guideline C(i) specifies the need for due consideration for the community of interests within each proposed electorate including economic, social and regional interests.

Turner is one of the suburbs which surround the City and it is important to remember that it was developed in accordance with the "Garden City" concept which historically has been the defining character of Canberra. This has enabled ACT residents to "belong" to a planned city of parks and open spaces. The older suburbs thus require adequate electoral representation as a bloc in order to preserve this character. The alternative is to artificially combine old and new suburbs which have few common interests, and possibly some divergent interests and different preferences and lifestyles.

Turner is one of the long established suburbs of the Inner North. It was settled during the 1940s, that is some 70 years prior to Gungahlin which was commenced during 1991. It is a vibrant, decades-old social community whose residents continue to share common values and bonds and pursue common initiatives, notwithstanding gradual demographic alteration brought about by densification.

North Canberra, South Belconnen and Woden contain nearly half of all the Canberra residents aged 65 and over. In contrast, the more recently settled suburbs of Gungahlin and South Tuggeranong have less older residents. Based on this demographic they have similar infrastructure needs such as transport, support services and social networks. They therefore belong together in electoral terms.

The Inner North and South suburbs are situated in the vicinity of the major social, cultural, educational and legal institutions of the National Capital. Their shared voice is paramount to the maintenance and development of these institutions for the use and participation of all ACT residents. In particular, the North Canberra suburbs have a long-standing, organic connection to the remainder of the inner north through the public schooling system, health centres, sport and recreational associations, and employment in the city centre, CSIRO and Australian National University. By the same token, all residents in the north depend on major health care facilities (notably Calvary Hospital) located in neighbouring Ginninderra.

Guideline C (ii) requires due consideration of the means of communication and travel within each proposed electorate.

Turner and O'Connor are within walking distance of the city. Hence their focus is on cycle access, footpath safety and road maintenance. They are supplied with frequent bus services. In this dimension they are quite distinct

North Canberra, South Belconnen and Woden contain nearly half of all people aged 65 and over in Canberra. In contrast, the more recently settled suburbs of Gungahlin and South Tuggeranong have fewer numbers of older residents. Based on this demographic they have similar infrastructure needs such as transport, support services and social networks. They therefore belong together electorally.

The inner north and south suburbs are situated in the vicinity of the major social, cultural, educational and legal institutions of the National Capital. Their shared voice is paramount to the maintenance and development of these institutions for the use and participation of all ACT residents.

The North Canberra suburbs have a long-standing, organic connection to the remainder of the inner north through the public schooling system, health centres, sport and recreational associations, and employment in the city centre, CSIRO and Australian National University. By the same token, all residents in the north depend on major health care facilities (notably Calvary Hospital) located in neighbouring Ginninderra.

Guideline C (ii) requires due consideration of the means of communication and travel within each proposed electorate Turner and O'Connor are within walking distance of the city. Hence their focus is on cycle access, footpath safety and road maintenance. They are supplied with frequent bus services. In this dimension they are quite distinct from suburbs such as Gungahlin, Palmerston and Crace where the majority of residents must, of necessity, commute for work, leisure and recreation. This is a very important distinction.

Guideline C (iii) requires due consideration of the physical features and area of each proposed electorate.

Turner as one of the older suburbs in the inner City has physical features which are similar to such suburbs as Reid in terms of their heritage character. Their role in the preservation of these features (such as Haig Park) is necessary for the benefit of all Canberra residents.

The suburbs of Turner, Braddon, Lyneham and Dickson have been brought together physically through the Government's housing re-development program. They share very similar and valid concerns related to the quality of housing, privacy and the preservation of green space.

The Augmented Commission's revised preference for an expanded seven member seat of Ginninderra will compound rather than help to ameliorate the above legitimate concerns that all Canberra residents have about the limitations posed by the current system to more effectively represent in the ACT Legislative Assembly distinct residential communities with differing and unique characteristics.

Gungahlin is not the only growth centre experiencing significant demographic change which, in the interests of fair and just democratic representation, warrant its residents having a more coherent voice in the Assembly. The ACT Government's policy of increasing population density in suburbs which are proximate to the city centre also entails a rapid increase of the voter population in the inner north through a policy of urban infill — and in suburbs such as Turner, Dickson and Braddon, this has recently been accelerated. Population increases in all inner north suburbs are, in the Electoral Council's own estimates, among the highest anywhere in Canberra beyond the newly created subdivisions to the north. Voter numbers are neither static nor declining in these inner north suburbs, unlike in some established suburbs in Molonglo and Brindabella.

Conclusion

The proposed electoral bifurcation of the inner north through the removal of Turner, O'Connor and Lyneham from the seat of Molonglo would diminish the capacity for inner north residents to have a fair voice within the Assembly.

Furthermore, the impact on residents and voters in the suburbs affected by the revised redistribution (approx. 30,000) would be particularly adverse because of the very different nature of their interests and concerns facing them — these tend to be more synonymous with issues and concerns relevant to voters and candidates in Central Canberra (Molonglo).

Under the proposed redistribution to result in an augmented Ginninderra, suburbs such as Turner and O'Connor would become merely a marginal and insignificant electoral pool of votes because they would find themselves on the periphery of an electorate governed for the most part by entirely different sections of the revised Territory Plan, and divorced from the attendant issues, concerns and interests that the Territory Plan seeks to balance in those areas. Suffice to say, the electoral process is a vital pillar of public accountability in the democratic process of effectively balancing these interests.

Yours sincerely,

Eugene Andrew Bajkowski

Submission re. proposed changes to ACT Legislative Assembly electoral boundaries

The ACT Electoral Commission

elections@act.gov.au

Dear Mr. Green

Dear Commissioners,

I am a long-time resident of Braddon and I thank you for the opportunity to comment on the proposals. Of the two proposals, I believe the first – the one that retains the integrity of Canberra's Inner North — is by far the very much better. I also wholly endorse and support the Submissions made to ACT Electoral Commission on this subject by the Turner Residents' Association and by my husband Eugene Andrew Bajkowski.

First of all, the Inner North of Canberra has been an integrated, cohesive community for many decades, while Gungahlin has not. Bike paths, bus routes, Haig Park, all cross Northbourne Avenue. We see ourselves as "Inner North" residents – it's a term that's been around for as long as I can remember and I have lived with my family in Braddon since 1975. Braddon already was a long-established community at that time. We brought up our family here. We have many common community interests on both sides of Northbourne Avenue. Our son lives in Turner in the house in which his Grandparents lived and of which he is a co-owner.

Splitting us between two electorates seems unnatural and it is difficult to see what useful purpose it might possibly serve. There is another reason: the best way of redistributing boundaries would minimise moves of suburbs in and out of electorates, as population changes occur. In the second proposal, as Gungahlin grows and expands, surely Turner, O'Connor and Lyneham would before long have to be moved back to join their other inner North neighbours in Molonglo? This would be disruptive for people living there.

Therefore I support the first proposal, in which Crace and Palmerston would be transferred from Molonglo to Ginninderra.

Yours sincerely,

Jolanta Bajkowski

ACT Electoral Commission
PO Box 272
Civic Square ACT 2608

Friday, 5 August 2011

Dear ACT Electoral Commission

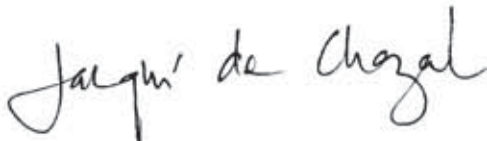
I am writing to object to the proposed changes to the ACT electoral boundaries that would see the inner North divided: Turner, O'Connor and Lyneham separated from Braddon, Reid, Ainslie, Dickson, Hackett, Watson and Downer.

My objection lies in how this proposed redistribution divides a relatively long established inner North community. I use my own pattern of Canberra habitation to substantiate this claim.

I grew up in Sutton, NSW and went to High School at Lyneham, then College at Dickson, this schooling undertaken in the early 1980s. My catchment of friends was not surprisingly mostly from the inner North. This association and an emerging identity with this area deepened when I left school, where I lived in a range of houses in Turner, Reid, Ainslie, and O'Connor. I purchased the place where I now live two years ago and plan to reside here long term. These suburbs both *east and west* of Northbourne Avenue are Canberra to me. Northbourne Avenue was and is not an obvious and self-evident dividing line. My present domestic pattern of life in Ainslie cannot be distinguished from when I lived in O'Connor, Turner, or Reid. Apart from the obvious, ie I now leave from home east of Northbourne, I still shop at the same shops (Ainslie, Dickson, O'Connor, Lyneham), I go to the same bars and cafes (Civic, Lyneham), I visit the same friends (Ainslie, O'Connor, Lyneham).

Dividing this community of which I am part takes something important away from me. The electorate in which one resides means something. Identity, connection, shared services, common representatives, shared vision. This is Community. By dividing this area across two electorates you would be dividing a palpably living community. Division of the inner North seems antagonistic to the spirit and intent of good decision-making with regard to the placement of an electoral boundary.

Sincerely



Jacqueline de Chazal

From: Regan Field
Sent: Friday, 5 August 2011 3:41 PM
To: Elections
Subject: Objection to the changed electoral boundaries

To whom It May Concern:

I am writing as a resident of O'Connor to express my concern at the proposed changes to the Electoral boundaries to separate Turner, O'Connor and Lyneham from the rest of the Molongolo electorate.

I have lived in the inner North of Canberra for over 11 years and consider all the inner-North suburbs as one community of interest. While I live in O'Connor, my household regularly frequent Civic and Dickson for work, shopping and leisure. I think the issues of concern for my suburb are more comparable to those of Ainslie, Reid, Dickson, Downer, Watson and Hackett, given the age of the suburbs and common central location. These suburbs and their residents share a community of interest and if split, I would be concerned that our interests may not be as well represented in the Legislative Assembly.

Kind regards

R Field

From: mwalsb
Sent: Friday, 5 August 2011 4:14 PM
To: Elections
Subject: A submission concerning the proposed changes to ACT Electoral Boundaries

Dear Sir/Madam

I support the following 'Friends of O'Connor' submission.

thank you

Michael Walsh

The 'Friends of O'Connor' thank the Augmented Commission for the opportunity to make a submission, at this late stage, and we acknowledge the difficulty the Commission faces in making an equitable decision. The Commission is on record as having said:

"any attempt to avoid splitting Gungahlin must of necessity split another district."

We submit the following points regarding the current proposal to move Lyneham, O'Connor and Turner (LOT) into an enlarged Ginninderra electorate:

1. The creation of a new seven member electorate should be canvassed Canberra-wide. It has been argued for by only one of Canberra's regions - Gungahlin.

[The 2007 Augmented Commission report (page 28) noted that "only representatives and/or residents of Gungahlin have argued for changing the location of the 7 member electorate." The location of the 7-member electorate has therefore not been a Canberra-wide issue.]

2. The Commission has accepted that there is a community of interest with 'adjacent north Canberra suburbs', and has stated earlier.

"While Lyneham and O'Connor share some interests with the adjacent Belconnen suburbs, particularly O'Connor ridge, the new Gungahlin Drive extension forms a natural barrier between them. The Committee considers that Lyneham and O'Connor have much stronger links with the adjacent north Canberra suburbs."

This is even more true of Turner.

3. The disruption of a long established community:

The 2011 Redistribution Committee's Report (aka 'the first report') discussed the option of moving Lyneham, O'Connor and Turner (LOT) to Ginninderra and concluded on page 19:

The Committee is also concerned that this option would significantly disrupt the community of interests that Lyneham, O'Connor and Turner share with neighbouring (north) Central Canberra suburbs. As the various Central Canberra suburbs were developed and settled much earlier than the suburbs of Belconnen and Gungahlin, it is arguable they have much more in common with each other than they do with the suburbs developed more recently. For example, it could be argued that Lyneham, Turner and O'Connor have much closer connections to the university precinct of Acton, the adjacent City area and the neighbouring suburbs of Braddon, Dickson, Downer and Watson than they do with Belconnen or Gungahlin.

However, the 2011 Augmented Commission's report (aka the second report) paradoxically claimed that barriers with Belconnen such as O'Connor Ridge are actually links, clearly contradicting the earlier report by the Augmented Commission itself.

Northbourne Avenue is an insignificant barrier between the suburbs of the Inner North and has no intrinsic merit as an electoral boundary, whereas O'Connor Ridge, far from being a *connection* between LOT and Belconnen, is in fact a *barrier*.

4. Densification and urban in-fill.

The planned densification of population along Northbourne Avenue will create, rather than diminish, community between both sides of Northbourne Avenue. The expected densification of population elsewhere in the inner north creates a distinct set of issues and interests different from issues in other more recently developed suburbs.

5. Moving the 'LOT' suburbs is unnecessarily disruptive and may need to be reversed later.

The changes in the second proposal would lead to a major change in boundaries and would substantially disrupt residents in both Gungahlin and the Inner North. This is not necessary or desirable. In addition, Gungahlin's expected growth might result in the three 'LOT' suburbs in Inner North, being moved back to Molonglo in the 2016 redistribution.

Future population trends will require more redistributions, and the correct course for 2011 is to make the *minimal changes* suggested in the Commission's first proposal.

6. The 'Friends of O'Connor' therefore submit that the least disruption to voters and to community loyalties would be achieved by moving Crace and Palmerston as originally proposed. Crace has a population of less than 200. This would be consistent with the clearly desirable continued progression towards the electoral union of Gungahlin with Belconnen.

7. We note our concern that the means of public notification have been inadequate, thus inhibiting public debate and the democratic process, and giving an unreasonable advantage to those who have been made aware, by good fortune, of the redistribution issue earlier in the process. We request an exact description of the means by which the public was notified.

8. We note that the legal requirement for three electorates, with 7,5,5 members, and geographical contiguity, greatly constrains the decision and makes the disappointment of some voters inevitable.

We therefore believe that the interests of Canberra would be better served by three electorates of seven members each, which we understand would require legislation both at the local and the federal level. We would be interested to know, from the Commission, whether that solution would make the issue of boundaries less contentious.

From: Harvey Bromwich
Sent: Friday, 5 August 2011 10:54 AM
To: Elections
Subject: Electorate Boundary Change

ACT Electoral Commissioner, Dear Sir,

We strongly support the proposal of a redistribution of an electoral boundary which combines ALL of the Gungahlin region into Ginninderra electorate (combining with Belconnen region). Gungahlin is a rapidly growing region and is now lacking in adequate infrastructure, (both into and throughout the region) very limited job opportunities, (particularly Government jobs) and poor facilities (not even a Canberra Connect office) while each week more and more people are moving into Gungahlin area. The ACT Government has NOT delivered on many "promises" (completion of roads, provision of an Aquatic Centre, etc) and have disregarded many pressing issues as the region has been "split" across two electorates.

Combining the region will give the Gungahlin community i.e. the voting public, the opportunity to press for these issues (and many more) to be addressed. We look forward to this proposal being adopted.

Harvey & Lorraine Bromwich
Amaroo

From: Nicola Davies
Sent: Friday, 5 August 2011 2:22 PM
To: Elections
Subject: Molonglo Redistribution

To whom it may concern

I am writing to object to the most recent proposed redistribution which sees north canberra split between Molonglo and Gininderra, and would request a return to the original proposal which say Crace and Palmerston moved to Ginninderra. As a resident of Molonglo, and therefore a citizen affected by this proposal, I am deeply concerned about the impact of this proposal on my community. The North Canberra community is a well defined, engaged, and dynamic community built around the environmental, town planning and social factors that define inner north Canberra. Moreover we are represented as a community by the North Canberra Community Council exactly because of the commonality of interests that define this unique community. I understand that one of the main reasons for the new proposed redistribution was concerns by Gungahlin residents about the impact of the original redistribution on their community. In response I would say that consequently I would expect the same treatment of the North Canberra community and further that the new proposed redistribution has a much larger impact on the North Canberra community than the original proposal to remove Palmerstone and Crace (which in the later case less than half built) to Gininderra.

Nicola Davies

From: Lynn
Sent: Friday, 5 August 2011 4:46 PM
To: Elections
Subject: Gungahlin electoral boundary changes

I live in Ngunnawal and have done for 14 years. I would like to see the changes made to the electoral boundaries in my area. It makes no sense at all to have one area divided as Gungahlin is. It is confusing for voters and surely, unnecessary.

Here is my vote to have Gungahlin one electoral zone with Belconnen.

thankyou

Lynn Nerdal

From: Jenni Boon
Sent: Friday, 5 August 2011 2:04 PM
To: Elections
Subject: A submission concerning the proposed changes to ACT Electoral Boundaries

Dear Commissioners

Thank you for the opportunity to make a submission on the proposal to move Lyneham, O'Connor and Turner (LOT) into an enlarged Ginninderra electorate. As a resident and rate-payer of O'Connor I have several concerns about the proposal and wish to register my objections to it for the following reasons:

1. The creation of a new electorate has not been adequately canvassed. It has been argued for by only one of Canberra's regions – Gungahlin and should be canvassed Canberra-wide.
2. The Commission has accepted that there is a community of interest within 'adjacent North Canberra suburbs', and has previously stated:

"While Lyneham and O'Connor share some interests with the adjacent Belconnen suburbs, particularly O'Connor ridge, the new Gungahlin Drive extension forms a natural barrier between them. The Committee considers that Lyneham and O'Connor have much stronger links with the adjacent north Canberra suburbs."

3. The disruption of a long established community:

The 2011 Redistribution Committee's Report discussed the option of moving Lyneham, O'Connor and Turner (LOT) to Ginninderra and concluded on page 19:

"The Committee is also concerned that this option would significantly disrupt the community of interests that Lyneham, O'Connor and Turner share with neighbouring (north) Central Canberra suburbs. As the various Central Canberra suburbs were developed and settled much earlier than the suburbs of Belconnen and Gungahlin, it is arguable they have much more in common with each other than they do with the suburbs developed more recently. For example, it could be argued that Lyneham, Turner and O'Connor have much closer connections to the university precinct of Acton, the adjacent City area and the neighbouring suburbs of Braddon, Dickson, Downer and Watson than they do with Belconnen or Gungahlin".

4. Densification and urban in-fill.

The planned densification of population along Northbourne Avenue will create, rather than diminish, community on both sides of Northbourne Avenue. The expected densification of population elsewhere in the inner north creates a distinct set of issues and interests different from issues in other more recently developed suburbs.

5. Moving the 'LOT' suburbs is unnecessarily disruptive and may need to be reversed later.

The changes in the second proposal would lead to a major change in boundaries and would substantially disrupt residents in both Gungahlin and the Inner North. This is not necessary or desirable. In addition, Gungahlin's expected growth might result in the three 'LOT' suburbs in Inner North, being moved back to Molonglo in the 2016 redistribution.

Future population trends will require more redistributions, and the correct course for 2011 is to make the *minimal changes* suggested in the Commissions first proposal.

6. The least disruption to voters and to community loyalties would be achieved by moving Crace and Palmerston as originally proposed. Crace has a population of less than 200. This would be consistent with the clearly desirable continued progression towards the electoral union of Gungahlin with Belconnen.

Your sincerely

Jenni Boon

From: Colin Pardoe
Sent: Friday, 5 August 2011 4:39 PM
To: Elections
Subject: Submission on ACT Electoral boundaries

Dear Sir/Madam

I am writing to express concern about the proposal to shift the suburbs of Lyneham, O'Connor and Turner from the electorate of Molonglo into the electorate of Ginninderra.

Such a proposal seems to contradict many of the principles of the Electoral Act. These include community of interests such as economic and social interests; communication and travel; and physical features.

Clearly Lyneham, O'Connor and Turner have a strong historic, social, institutional and demographic relationship with the other inner northern suburbs as well as a number of shared values and concerns. Belconnen, on the other hand, is geographically separated from us by kilometres of bushland and many litres of petrol. It does not form part of the same natural community in any social, demographic or economic sense.

I am also concerned that the proposed move will diminish the representation of local knowledge, understandings and issues at the political level by cutting across natural alliances with like-minded citizens and disrupting an established community with a strong historic and contemporary social identity.

The first report recognised these problems and I endorse the original proposal by the Redistribution Committee.

I strongly urge rejection of the recommendations of the second report by the Augmented Commission.

Yours faithfully

(Dr) Colin Pardoe

From: David Turbayne
Sent: Friday, 5 August 2011 4:53 PM
To: Elections
Cc: Vilaisan Campbell
Subject: Objection to Redistribution Committee proposal

We wish to express our objection to change the ACT electoral boundaries as proposed by the Redistribution Committee.

In particular we are concerned by the proposal to divide the current inner north suburbs which would see Lyneham, O'Connor and Turner split from the other inner north suburbs to form a new electorate with Belconnen and Gunghalin.

Both my partner and myself have lived in the suburb of Watson in the inner north for over a decade. I (David) have also lived for number of years in Lyneham where I owned a flat and was an active participant in the 'Save the Ridge' campaign during the 1990's. We are currently members of the Watson Community Association and follow closely community issues that affect the inner north.

What is demonstrably clear is that there are strong areas of common interest and concern in the inner north; current examples are the wetlands ponds being created in Lyneham, O'Connor and Dickson and the concerns over infill planning and the impact on social amenity of commuter traffic emanating from Gunghalin and Belconnen.

As such, we would like to see the ACT Electoral Commission revert to its original option which moved the Gunghalin suburbs of Grace and Palmerston into Ginninderra and left the inner north intact within the electorate of Molonglo.

David Turbayne and Vilaisan Campbell

From: Penny Taylor
Sent: Friday, 5 August 2011 4:59 PM
To: Elections
Subject: Submission relating to ACT Electoral boundaries and suggested changes

Dear Sir/Madam

I am writing to express some of my concerns about the proposed boundary changes that would result in the moving of three inner north suburbs (Lyneham, O'Connor and Turner) from the Molonglo electorate to Gininderra.

The first report into possible redistribution came down strongly against such a move, arguing cogently that it would 'significantly disrupt the community of interests that Lyneham, O'Connor and Turner share with neighbouring (north) Central Canberra suburbs'. Given this, it came as a surprise to me to read the second proposal that these three suburbs were to be removed from their organic geographic, historical, social and demographic community of interests. The demographics and interests of Gungahlin seem to fit far better with those of Belconnen.

In this submission, I will focus on social and community aspects since these are close to my heart. I would ask that you not read this submission as coming from an inner-city elitist who does not wish to be linked to the outer suburbs. I have given this some thought, particularly since many of our son's friends live in Gungahlin, a suburb they love and that I enjoy visiting. Gungahlin has developed its own thriving sense of community in a remarkably short space of time – but it is a community based on shared experiences, needs, and issues of concern. These are not the same as those that have formed and continue to inform the community we now know as 'the inner north'.

I first moved to Canberra in 1979. When we bought our house in Turner, many of my colleagues were surprised that we had opted for a 'guvvie' instead of larger suburban dwelling. I recall explaining to them that it was the local character we loved, the sense of community. Over the years, we have put a lot of effort into maintaining our community, physically and socially. My husband and I spent our earlier years in local council areas and have always missed this particular layer of government. When it comes to effective decision-making and implementation of actions, it is hard to beat local knowledge and understanding of local issues. Living in a local council area puts responsibility at the local level and gives easy access to one's elected representatives. In Canberra, this layer of government and sense of local representation is lacking, but at least members representing Molonglo could be expected to have a reasonable understanding of inner north issues – something we risk losing.

In the absence of a local council structure, and given our increased remoteness from decision makers, my husband and I have considered it important to assume more responsibilities ourselves. Let me give you some examples of how we live in our inner north community.

We live in Turner and play tennis at both Lyneham and Reid. We have never considered Northbourne Avenue a boundary – rather it is the boulevard that runs through the centre of our lives, something that has been enhanced by increased development along its flanks. We walk and cycle to shops and cafes in Civic, Braddon and Acton. We have friends across the inner north whom we visit regularly. Some have downsized and are enjoying life in new developments on either side of Northbourne Avenue, in both Turner and Braddon. We walk the full length of Haig Park (which crosses Northbourne Ave) with our dogs at least once a week, calling in on Ainslie friends when we reach Corroboree Park. We also take the dogs to the O'Connor Oval and to the Acton Peninsula. We shop principally in the local IGAs at O'Connor, Lyneham and Ainslie because we appreciate the community atmosphere in these shopping precincts and consider it important to support local facilities so that everyone has shops within walking distance. We go to Dickson Library, Dickson Swimming Pool, and large supermarkets as needed. Our doctor is in Ainslie; our dentist in Civic. Our children went to Turner Primary School and then to Campbell and Dickson. We seldom go to Belconnen or Gininderra; it is a long way away and we try to limit fuel consumption.

We pick up litter wherever our lives take us in the inner north. We prune branches that risk getting in cyclists' eyes as they pedal through our suburbs on their way to the ANU or town. We take part in seasonal working bees at Dirrawan Gardens, Reid to look after the tennis courts and their surrounds. We pull out noxious weeds wherever we see them and fill in holes in nearby parks that risk breaking ankles. My husband regularly cleans park benches in our area to encourage people to sit on them and enjoy our neighbourhood. In living our lives, we become aware of the needs of people in our community and try to assist as much as possible.

Of course, there is no reason why any of this should change just because an electoral boundary changes, but I fear the redistribution will have more than symbolic effects. The basis of our political representation will change as will many of the institutions that broker our interests and concerns resulting in fragmentation and confusion.

I am currently working on an ACT Heritage Grant preparing two self-guided walks focussing on inter-war Art Deco architecture at Acton and the inner north. Conducting this research has made me particularly conscious of the shared social history of the inner north. In the text for my guides, I notice that I have referred frequently to 'the inner north', confident that readers from within or outside the area would understand and relate to the concept. Yet this very concept appears to be under threat.

Can I please urge you to reject the redistribution proposed in the second report by the Augmented Commission.

Yours faithfully

Penny Taylor

From: David Shorthouse
Sent: Friday, 5 August 2011 3:58 PM
To: Elections
Subject: Electoral redistribution

Dear Sir

I support the general thrust of the many submissions you have had from residents in inner north Canberra who OPPOSE the proposal to move Lyneham, O'Connor and Turner into the Ginninderra electorate. North Canberra is my community. I have no affinity with Belconnen or Gungahlin.

I live in Lyneham and identify with north Canberra. I shop at Dickson, that is where my library is, my doctor is in Ainslie, I mostly go to Civic for department store shopping and the cinema, I regularly access the ANU and CSIRO at Acton. Northbourne Avenue is no barrier to active enjoyment of north Canberra. I go the Lake Burley Griffin for lakeside recreation (not Lake Ginninderra), I attend a church in Turner.

David Shorthouse

From: Matt Ryan
Sent: Friday, 5 August 2011 5:03 PM
To: Elections
Subject: Objection to the second proposed redistribution

Hello,

I would like to raise my objection the Electoral Commission's second proposal, which will split the Inner North between two electorates. There is a great commonality of interest and a sense of community within Canberra's Inner North, focussing on the proximity to ANU and to Civic and based also on the long period which the suburbs have been established.

This community also suffers similar potential threats to amenity and lifestyle as its streets are used to traverse from Canberra's far northern suburbs to Civic and beyond. It is important that this established community be in a position to express a cohesive voice in its struggle to prevent the suburbs being transformed into traffic thoroughfares for the benefit of newer suburbs outside this area.

regards
Matt Ryan



**Augmented ACT Electoral
Commission's Proposed Redistribution**

ACT Greens Party Submission

August 5, 2011



Graham Jensen
Convenor
ACT Greens Party

Phil Green
ACT Electoral Commissioner

Submission to ACT Electoral Commission
Ground Floor, North Building, Civic Square, London Circuit,
CANBERRA ACT 2601

Subject: Augmented ACT Electoral Commission's Proposed Redistribution

The ACT Greens write to express a number of concerns about the recent augmented proposed redistribution which changes the electoral boundaries to include parts of the Inner North in the electorate of Ginninderra.

The ACT Greens support the notion that Gungahlin should, when possible, be represented in a single electorate. However, in attempting to address this issue, i.e. that of the community of Gungahlin being broken across two electorates, the most recent proposal from the electoral commission essentially creates the same concern for another community i.e. that of the Inner North. We contend that this is not in the interests of the community of the Inner North, particularly given that ongoing strong expected growth in the population of Gungahlin will render this a short term solution. We believe that it goes against the principle outlined in the legislation that smaller changes are preferred. We also believe the proposed changes potentially results in unnecessary upheaval and confusion for residents of both the Inner North and Gungahlin should there be future changes associated with changes to the size of the Legislative Assembly in the short to medium term.

The previous proposal only changed two suburbs, one of which is a very new suburb, yet this proposal moves 3 very well established suburbs, which have always been in the Molonglo electorate since the ACT Assembly was established.

Comments on the second redistribution

Section 36 of the Electoral Act sets out the criteria under which a redistribution is to be conducted. The ACT Greens make the following comments on two items under the criteria:

(i) the community of interests within each proposed electorate, including economic, social and regional interests;

The ACT Greens believe that, like the community of Gungahlin, the Inner North is a community of shared interests, demonstrated through the shared services and facilities within the area, and by a shared culture exhibited in community events.

By drawing the boundary along Northbourne Avenue, the Commission is splitting this in two.

The community of the Inner North is united through:

- The physical separation between the Inner North and other parts of Canberra by O'Connor Ridge to the West, the Lake Burley Griffin, Mount Ainslie/Majura to the East, and EPIC to the North. It is a physically separate community;
- Sullivan's Creek runs from one side to the other and unites it;
- The many community festivals held on an Inner North basis such as the recent series of wetland festivals and the Majura Festival;
- Representation by one community council – that is the North Canberra Community Council;
- Dickson as the group centre is the major shopping destination for all of Inner North;
- District sporting grounds provided for the whole of the Inner North; and
- The one college for the area located in Dickson.

The Inner North community also faces common challenges, including:

- Traffic management issues as people use the suburban streets to reach further destinations;
- Transport issues on the Northbourne Avenue corridor;
- Urban densification of the area – in the suburbs and along Northbourne Avenue;
- Redevelopment of older houses;
- Changes to the central area around Civic;
- An ageing population; and
- Ageing infrastructure such as footpaths, shops and schools.

Similarly, the community of Gungahlin also has challenges unique to its community, and whilst the Greens support addressing how those issues might be best represented within the electoral distribution framework, we do not support creating similar challenges in another area as a by-product of resolving the issues for Gungahlin.

However, the ACT Greens also believe that there is some commonality of interest between the Inner North and Gungahlin. Both areas are growing in population. Many people from Gungahlin use Dickson as their shopping area, partly for historical reasons. Many people from Inner North also shop to some extent in Gungahlin and use some facilities there. Both areas share Northbourne Avenue as a major road and there is a clear shared interest in the Inner North and Gungahlin around transport planning. Much of the congestion being experienced in the Inner North is resulting from the growth of Gungahlin.

It could be considered that, at least in the short term, leaving the two areas in a single electorate would be preferable in seeking positive solutions to some of these issues.

In contrast Belconnen is not growing to such an extent and has different issues to both Gungahlin and Inner North.

(ii) the means of communication and travel within each proposed electorate;

The Inner North and Gungahlin are well connected by Northbourne Avenue. Most bus routes to Gungahlin go through the Inner North. The connection between Gungahlin and Belconnen is not as great, as the Gungahlin Drive Extension goes through O'Connor Ridge, not a residential area.

(iii) the boundaries of existing electorates; and

The proposed redistribution will mean that all of Gungahlin (except Nicholls which is already in Ginninderra), and the western half of Inner North, will change electorates from Molonglo to Ginninderra. The Greens believe that the criterion in the legislation supports minimal change. The proposed second redistribution cannot be described as a minimal change.

Overall comments against the criteria

The ACT Greens appreciate that the commission is in a position that, given the number and size of electorates, there is no perfect solution that meets all criteria. From the point of view of the 'community of interest' criteria, both of the two proposed redistributions solve one problem and create another. Either Inner North or Gungahlin will be divided. However taking into account the criteria of 'boundaries of the existing electorates', our conclusion is that the whereas the first redistribution is consistent with that criteria, the second is not.

Process issues

While the redistribution has been commented on in the media, most of this commentary has been on the possible effects on political parties, it's likely that very few members of the public in the Inner North would be aware that their region is proposed to be split into two by an electoral boundary. The ACT Greens believe that such significant electorate changes should be supported by more extensive public engagement before they are incorporated into legislation.

Longer term issues

The Greens believe Gungahlin should, ideally, be wholly within one electorate. However, we would suggest that such a radical re-drawing of the electoral boundaries should not be undertaken for the 2012 election, but reviewed within the context of debate about resizing the Legislative Assembly, an issue that has been under consideration for some time. This would be a more logical time to undertake major boundary change, and as this remains a live political discussion, is a relevant factor for consideration.

This is particularly pertinent as it is likely to be the case that the Inner North suburbs, moved into Ginninderra under this proposal, would be re-incorporated into Molonglo at the next redistribution. This would result in compounded confusion for voters. We believe that it is preferable to gradually expand Ginninderra, rather than make two significant changes to Molonglo over two or three electoral cycles. .

Conclusion

The ACT Greens support the Commission's first redistribution, which was one of minimal change and left the electorate of Molonglo essentially the same with the transfer of Palmerston and Crace into Ginninderra..

From: Ewan Brown
Sent: Friday, 5 August 2011 5:26 PM
To: Elections
Subject: Objections to the Proposed Redistribution by the Augmented ACT Electoral Commission.docx
Attachments: Objections to the Proposed Redistribution by the Augmented ACT Electoral Commission.docx

Please find attached my submission to proposed electoral redistribution.

Ewan Brown

Objections to the Proposed Redistribution by the Augmented ACT Electoral Commission

Submitted by Ewan Brown (resident of Ngunnawal ACT).

In general I support the Augmented Commission's proposals to:

- Alter the Redistribution Committee's proposed redistribution to propose that Molonglo become a 5-Member electorate including all of the district of Molonglo Valley;
- Retain the existing Brindabella electorate unchanged; and
- Retain the existing names for the electorates of Brindabella, Ginninderra and Molonglo.
- Alter Ginninderra to be made the 7-Member electorate.

However I do not agree with the proposal to include the Canberra Central suburbs of Lyneham, O'Connor & Turner with the suburbs of Belconnen, Gungahlin and Hall to form this electorate.

I support the earlier objections which argued that, in making its proposal, the Redistribution Committee had given too much weight to the criterion regarding existing electoral boundaries and too little weight to the other criteria related to community of interests, including economic, social and regional interests, means of communication and travel, and physical features and area.

Gungahlin, as a rapidly growing new area, is split between two electorates with a range of community interests represented by both older & new communities at critical points in their respective development.

The 'older' areas of Gungahlin suffered for many years from lack of essential amenities, including lack of adequate telecommunications (broadband), adequate road access, commercial facilities & employment opportunities. The rapidly expanding newer areas of Gungahlin are also experiencing the ramifications of 'catch-up' planning & provision of facilities & amenities commensurate with the needs of the growing population. The residents of Canberra Central suburbs of Lyneham, O'Connor & Turner do not experience similar issues & their interests are better aligned with the residents of North Canberra.

I support the view that the growth in Gungahlin has been accompanied by increasing connections between Gungahlin and Belconnen as:

- many Gungahlin residents have made use of schools, medical facilities, employment opportunities, shopping and commercial areas in the adjacent district of Belconnen.
- the development of the Gungahlin Drive Extension and the heavy usage of other roads linking Gungahlin and Belconnen have facilitated these connections.

In relation to the arguments calling for stability of boundaries and for minimising the transfer of electors between electorates it can be argued that most Gungahlin residents would support the move from one electorate to another (to combine

Gungahlin and Belconnen together in the one electorate) under the Augmented Commission's proposal as it would create an area with vastly more similarities between affected Gungahlin & Belconnen residents rather than maintaining an electorate comprising some residents of South Canberra – far removed from most synergies with Gungahlin residents.

My main issue is with the view that these two districts (Gungahlin & Belconnen) by themselves are not large enough to create a 7-Member electorate, thus 'making it necessary' to include other adjacent areas to make up the numbers to bring the electorate to within +/- 5% of the quota at the time of next election.

The Augmented Commission concluded that its preferred option would be to include the suburbs of Lyneham, O'Connor and Turner as the other suburbs which could be combined with Belconnen and Gungahlin to constitute a 7-Member electorate.

The Committee noted that the option to make Ginninderra the 7-Member electorate, comprising all of Belconnen, Gungahlin and the suburbs of Lyneham, O'Connor and Turner would result in the electorate of Ginninderra being 1.08% above the quota at the time of the next election. This result would be comfortably within the required +/-5% variation from the quota. This option was considered by the Committee to be the best mix of suburbs that could constitute a 7-Member electorate including Belconnen and Gungahlin.

(The alternative of a progressive incremental shift of Gungahlin suburbs to the Ginninderra electorate in future redistributions would entrench the existing lack of commonality of interests perceived by affected Gungahlin residents & result in continuing dissatisfaction from those residents remaining in a less appropriate electorate (Molongolo)).

The Committee noted that a negative impact of this option would be the separation of the community of interests that Lyneham, O'Connor and Turner share with neighbouring (north) Canberra Central suburbs as it could be argued that Lyneham, Turner and O'Connor have much closer connections to the university precinct of Acton, the adjacent City area and the neighbouring suburbs of Braddon, Dickson, Downer and Watson than they do with Belconnen or Gungahlin.

The Turner Residents Association stated "that the suburbs of Turner, O'Connor and Lyneham should NOT be part of a larger Ginninderra electorate as Turner, O'Connor and Lyneham have much stronger links with central Canberra than with the newer suburbs to the north and should remain within the electorate of Molonglo."

My objection to part of the current recommendations is based on the 'requirement' to comply too heavily with variance limits to electorate quotas. As at 31 March 2011 the electorate of Molongolo was 2.7% over quota & Ginninderra was 0.60% below quota.

The Gungahlin area continues to grow at a significant rate. The suburbs of Bonner, Casey, Crace, Forde, Franklin, Gungahlin & Harrison have projected growth rates of enrolled persons in excess of 10% up to October 2012. In Belconnen the suburbs of

Belconnen Town Centre, Bruce, Dunlop & Macgregor have growth projections over 10%. Only Braddon, City & Phillip in the electorate of Molonglo have growth rates (from a reasonable base) over 10%.

Residents of Gungahlin feel that they have, and continue to, suffered from 'catch-up' remedial action in relation to many services facilities, services & amenities that they require. More growth is inevitable in Gungahlin as Kenny, Moncrief & Kinleyside are developed & populated.

Regardless of whether a complete review of electorate boundaries is undertaken shortly after the next ACT election there is a need to apply pro-active policies in addressing the needs of residents in growing areas in the ACT.

On 'paper' the proposed new electorate of Ginninderra would see a shortfall of 8.33% under quota at October 2012 if the suburbs of Lyneham, O'Connor & Turner were excluded. This variation from quota is based on population projections to October 2012 but the Gungahlin suburbs will continue to grow well after that date & a significant surplus situation could well occur within a short time afterwards, again placing the residents of that electorate at a representational disadvantage (under current terminology). Net growth in Gungahlin & Belconnen should significantly surpass that in Central & South Canberra so there is a need to anticipate this process.

Gungahlin residents in particular would prefer to see evidence of forward planning in relation to many of the issues they currently face. An electorate model that recognises the ramifications of rapid growth and an appropriate level of representation (both in terms of numbers of politicians & regional focus) should meet with a high degree of satisfaction.

Ewan Brown

From: Kerlin, Alan
Sent: Friday, 5 August 2011 8:57 PM
To: Elections
Subject: Submission: electoral boundaries augmented committee recommendation

GCC wish to convey our thanks to the augmented committee for the consideration given to the concerns we have raised regarding the current and previously proposed ACT electoral boundaries.

Although we have some residual concerns about the committee's proposal with regard to the retention of the split of Woden suburbs between two electorates, on the whole we support the proposal. Most importantly, the new boundaries will resolve the problem of the sprawled out Molonglo electorate. Irrespective of any remaining or future fragmentation of individual districts, it is far more important that the electorates are relatively compact geographically. We feel this will ultimately lead to more connected and therefore better electoral representation across all of Canberra.

We have canvassed the new proposal among Gungahlin residents and met with good support. We trust this will be reinforced by additional submissions from Gungahlin residents.

We look forward to seeing the new boundaries in place.

Regards,

Alan Kerlin
Gungahlin Community Council
Spokesman - Planning, Transport and Environment

From: bogey musidlak
Sent: Friday, 5 August 2011 11:27 PM
To: Elections
Subject: objection to boundaries proposed by Augmented ACT Electoral Commission
Attachments: Augmented Commission objection 2011.doc

Hello

Please find attached an objection by the ACT Branch of the Proportional Representation Society of Australia to the electoral boundaries that were proposed last month by the Augmented ACT Electoral Commission

Bogey Musidlak

Convenor

PROPORTIONAL REPRESENTATION SOCIETY OF AUSTRALIA (AUSTRALIAN CAPITAL TERRITORY BRANCH)

Abandon the proposal for major boundary upheaval

The Proportional Representation Society of Australia (Australian Capital Territory Branch) strongly opposes the boundaries proposed by the Augmented ACT Electoral Commission after the worst redistribution reasoning printed since the inception of the Hare-Clark system. While we did not agree with all aspects of the Redistribution Committee's earlier proposal, it was markedly superior in its report in applying the statutory criteria to be considered, and the rationale for its plan to shift Palmerston and Crace from Molonglo to Ginninderra was convincing.

For the first time in the history of our redistributions, we are confronted with an interventionist approach and arguments espoused that can only cause unnecessary and unwanted inconvenience to voters if they are proceeded with.

We disagree with the Augmented Commission's apparent attempts to address grievances raised by some electors that would create greater cause for unease elsewhere, as well as setting what could become a very bad precedent if the current proposals remain substantially intact.

The ACT Branch much prefers the principles enunciated during earlier redistribution processes when the approach being taken was explicitly one of causing minimum dislocation to voters. In addition, there should not be attempts to anticipate problems that might arise in the future when it is quite possible that efforts will be made to increase the size of the Assembly in association with centenary celebrations.

Some change is necessary

The Proportional Representation Society of Australia (Australian Capital Territory Branch) note at the outset that the recently-released ACT government population projections (<http://www.cmd.act.gov.au/policystrategic/actstats/projections/suburbs>) by suburb for 2009-2021 are not consistent with the Augmented Commission's projected enrolments for October 2012.

In particular, in the former Coombs is projected to have 250 residents by the end of 2012, whereas neither Coombs nor Wright is projected by the Augmented Commission to have any electors before the next election. If this is due to known slippage, the ACT government projections should be appropriately annotated without delay and otherwise projections relating to electors should be adjusted.

The ACT Branch nevertheless agrees that projected enrolments lie outside statutory tolerances in Molonglo and Ginninderra and therefore some alteration to boundaries is necessary.

Under the Hare-Clark system, a very high proportion of participating electors get an effective vote. You cannot do better than have the whole of your single transferable vote contributing to one or more candidates' election, and, with others, on polling day really influence who goes into the next Assembly.

Because of this basic fairness to voters, as well as candidates and parties, attempts at fiddling with electoral boundaries for advantage are essentially pointless and, in light of the entrenched provisions regarding odd numbers and minimum size of electorates, would even be of limited effectiveness in the absence of the statutory provisions regarding member-to-elector ratios. Political parties or groupings have recognised this and concentrated their efforts more on finding the right mixes of candidates for the different electorates while independents have not found grounds for complaint. As opposed to the frenetic jostling in single-member jurisdictions under a winner-take-all atmosphere, we have not had partisan controversies about boundaries since the inception of the Hare-Clark system, and there has been understanding by electors of occasional excisions that have been necessary to comply with enrolment tolerances..

Redistributions here have essentially been about avoidance of overly many or too few electors in Molonglo, Brindabella or Ginninderra under a legislative framework where the current boundaries are specifically set out as a significant consideration when decision-makers come to weigh up how to draw boundaries for the next election.

The ACT Branch has regularly emphasised, including when originally campaigning for the adoption of the Hare-Clark system, that if population movements are small, boundary changes should be avoided as no benefit can arise to voters from them. In particular, if population numbers actually remained static, there should be no questioning of the status quo just because the composition of a Redistribution Committee or Augmented ACT Electoral Commission changed.

The prospect of arguments from past years being re-run and previous decisions being effectively overridden because of fresh individual preferences or prejudices is generally eschewed in legal contexts and should be avoided in administrative arenas, in this case because it would fail to attach sufficient weight to the boundaries in operation at a particular point in time.

Major change is not warranted

The arguments adduced by the Augmented Commission, mainly comparing the current situation with one determined on the basis of populations and infrastructure over fifteen years ago, are wholly inappropriate and indeed disturbing. In the light of the specific statutory references to existing boundaries, a sound basis for decision-making requires consideration of whether the changes that have occurred since the previous redistribution was finalised in 2007, and to whose effects voters have become accustomed with minimal complaint, mandate some changes to boundaries, and if so, to what degree.

In this case, continuation of current boundaries would place projected enrolments at next year's election outside statutory tolerances. Within Molonglo, there is projected to be 8.3% growth over actual enrolment numbers at the last election, more than double the rate of increase in Ginninderra.

In the view of the Proportional Representation Society of Australia (Australian Capital Territory Branch), the changes that have occurred are not of sufficient scale to warrant a major adjustment of boundaries, particularly as we already have the

precedent in Brindabella of additional suburbs being transferred from Molonglo so that statutory tolerances for enrolments were adhered to.

The approach adopted previously at redistributions and proposed by the Redistribution Committee earlier this year is in accordance with sound practice and fits in with the expectations of voters that stability of boundaries will be maintained and seismic shifts avoided. This is all the more important if particular proposals under consideration involve disturbing significant groups of voters who have done nothing to warrant dislocation.

The mere fact of having to propose that three inner northern suburbs be excised from Molonglo to make the Augmented Commission's proposal "work" in relation to meeting statutory requirements, should be cause for careful thought. Why should the electors of Turner, O'Connor and Lyneham at a stroke be forced into an unwanted and avoidable predicament involving the highest-ever departure from natural boundaries in the ACT just so that others within Gungahlin are made to feel happier about having been heard, without the major sources of their grievances necessarily having been tackled effectively?

Population movements since the last redistribution do not provide adequate support for such a disruptive approach, particularly as voters in those suburbs voiced their displeasure when alerted to a surprise prospect and there is a more reasonable approach towards dealing with the statutory imperative that the Redistribution Committee espoused, namely shifting fewer than 5,000 voters from Molonglo to Ginninderra.

The Proportional Representation Society of Australia (Australian Capital Territory Branch) is cognisant and respectful of the predicament of voters in some Gungahlin suburbs who do not wish to be in an electorate different from that of friends in nearby ones, just as we feel for those similarly placed in the Woden Valley suburbs that have previously been affected by the need for Brindabella to have more electors.

However, in our view, their interests would be better served by having a standing Legislative Assembly committee or subcommittee dedicated to addressing issues faced by those in our fastest-growing suburbs or regions. Not only would such a practical step provide them with a regular forum for raising important issues for the attention of all MLAs and electors because of the media interest that would ordinarily ensue, but also it would allow the committee to develop expertise in dealing with the executive, public servants and service providers that should minimise the prospect of avoidable problems occurring elsewhere in the Territory when development activity occurs rapidly.

With major new expansion of home building poised to start in the Molonglo Valley and ongoing inner urban and lakeside developments, it would be to the Territory's ongoing advantage to have relevant issues focused upon regularly initially by a standing committee, and, through that, then the entire Assembly. Such a comprehensive approach of long-lasting value to the Territory is much more attractive than any proposal to take a step that seems to provide a greater level of political attention to electors in one suite of affected suburbs but not necessarily others.

Revert to minimal change along the lines the Redistribution Committee proposed

In summary, our Hare-Clark system does not have winner-take-all bonuses available for potential party capture through meticulous attention to exactly where boundaries are drawn because we predominantly get an effective vote wherever we live. Where population changes have been modest and boundary changes must occur, most voters will expect only modest changes to boundaries and should not be subjected to surprises that have limited community support but entail avoidable adverse consequences.

Given the relatively modest changes in population since 2007 and the dislocating impacts of making major changes, it is most reasonable to opt to now shift Palmerston from Molonglo to Ginninderra, and having made that threshold decision, to take the additional associated step of transferring Crace so that Ginninderra's boundaries remain as natural as possible. In this case, such a second step also happens to diminish future prospects of further boundary movement being required.

Where changes are not required by statutory provisions, an activist future-oriented role on the part of the Redistribution Committee or Augmented ACT Electoral Commission is not appropriate, as there are always multiple unknowns to be dealt with before the next redistribution process gets under way.

In light of the scale of changes that have previously occurred through addition of Woden Valley suburbs to Brindabella, it is not appropriate to now put forward a massive rejigging of northern electoral boundaries that would cause an enormous amount of disruption to voters, candidates and parties.

The Proportional Representation Society of Australia (Australian Capital Territory Branch) trusts that the fearful prospect that has been raised by the proposal set out in the Augmented ACT Electoral Commission's report will be set aside for one more along the lines of what the Redistribution Committee enunciated.

In the process, all participants in our democracy have been put on notice that if growth patterns in Molonglo and Ginninderra remain noticeably uneven, there will come a time when on balance major change will be inevitable if Assembly numbers remain the same and further excisions from Molonglo become necessary in any case. This understanding may lead to discussions about taking steps to try to secure a modest and realistic increase in the size of the Assembly before the next redistribution gets under way.

The ACT Branch's view however in the current circumstances with which we actually need to deal remains strongly that only Palmerston and Crace should be transferred from one electorate to another, and other matters are best left for public debate and more detailed consideration when the operative underlying conditions are known in a bit more than three years' time.

From: Jonathon Reynolds
Sent: Friday, 5 August 2011 10:37 PM
To: Elections
Subject: Objection to proposed electoral boundary distribution (as proposed by Augmented ACT Electoral Commission)
Attachments: Future Effects of Current Proposed Distribution-2-2.pdf; ATT00001.htm; Ideal Long Term Model.pdf; ATT00002.htm

Augmented ACT Electoral Commission
ACT Electoral Commission
Ground Floor, North Building
Civic Square, London Circuit
CANBERRA CITY 2601

Dear Sir/Madam,

I wish to lodge a objection with regard to portions of the ACT Electoral Boundary redistribution as proposed by the Augmented ACT Electoral Commission.

I generally endorse the proposal to modify the electoral boundaries such that Ginninderra becomes the Seven Member Electorate, with Molonglo and Brindabella the Five Member Electorates.

The basis of my objection is that the proposal does not go far enough to address the problem of splitting of "communities of interest" across electoral boundaries with the potential impact that will occur at future redistributions.

With the current proposal the suburbs of Lyneham, O'Connor and Turner are to be removed from Molonglo included in the Ginninderra Electorate. Whilst this is an unfortunate splitting of the North Canberra "community of interest" for the current redistribution, it can clearly be extrapolated, that with rapid development predominately in Gungahlin, these three suburbs should be returned back to the Molonglo Electorate at the next redistribution as the number of voters in Ginninderra significantly increases. I endorse this current proposal.

Unfortunately no attempt has been made to address the underlying problem as it currently exists on the Molonglo/Brindabella boundary with the suburbs of the Woden Valley District still to be split across two electorates.

In the Statement published by the Augmented ACT Electoral Commission the following excuse was given for not attempting to address this issue:

"Given that the inclusion of Woden Valley suburbs in Brindabella has been a feature of the Brindabella electorate since its inception, and given that the boundaries of existing electorates are a factor to be given weight under section 36 of the Electoral Act, the Augmented Commission was not satisfied that a case had been made for altering the existing boundaries. Accordingly, the Augmented Commission decided to retain the Brindabella-Molonglo boundary unchanged."

Given this approach it could be argued that the Augmented ACT Electoral Commission intends to permanently entrench the practice where the suburbs of the Woden Valley will be redistributed piecemeal to the Brindabella Electorate as needs to "balance the numbers" dictate.

The diagram "Future effects of the currently proposed Electoral Boundary Model" attempts to illustrate this how this effect may play out.

I argue that the Augmented ACT Electoral Commission should be adopting a longer-term approach to addressing the problem along the Molonglo/Brindabella boundary.

The diagram "Suggested Ideal Target Electoral Boundary Distribution Model" attempts to illustrate a possible "perfect" electoral boundary scenario. Obviously, achieving perfection is a virtual impossibility, as the actual boundaries will need to be compliant with the relevant legislation at the time.

The Augmented ACT Electoral Commission has already noted that my previous proposal of transferring all Woden Valley suburbs to Molonglo and transferring the Weston Creek suburbs of Chapman, Fisher, Rivett, Stirling and Waramanga (that is, those suburbs south of Hindmarsh Drive) from Molonglo to Brindabella would ensure that the Brindabella Electorate is compliant with the relevant legislation for quota in October 2012.

My argument for this change based on my previous proposal as outlined above is now in part supported by demographic figures “ACT Suburbs and Districts Population Projections: 2009 to 2021” published on the ACT Government Chief Minister and Cabinet Web Page:
<http://www.cmd.act.gov.au/policystrategic/actstats/projections/suburbs>

A casual examination of these figures show that there will be a significant increase in population for the Molonglo District (immediately to the north of Weston Creek) Whereas the population of Woden remains stable, and the populations of Weston Creek and Tuggeranong Districts show slight declines over time. With this proposed model as the Molonglo Electorate (including all suburbs of the Woden Valley and Molonglo Districts) expands, more suburbs from Weston Creek will be transferred to Brindabella, ultimately with all suburbs of the Weston Creek District in the Brindabella Electorate. Obviously the Augmented ACT Electoral Commission will have access to resources to analyze these figures at a much finer detail in association with relevant Land Release and development data.

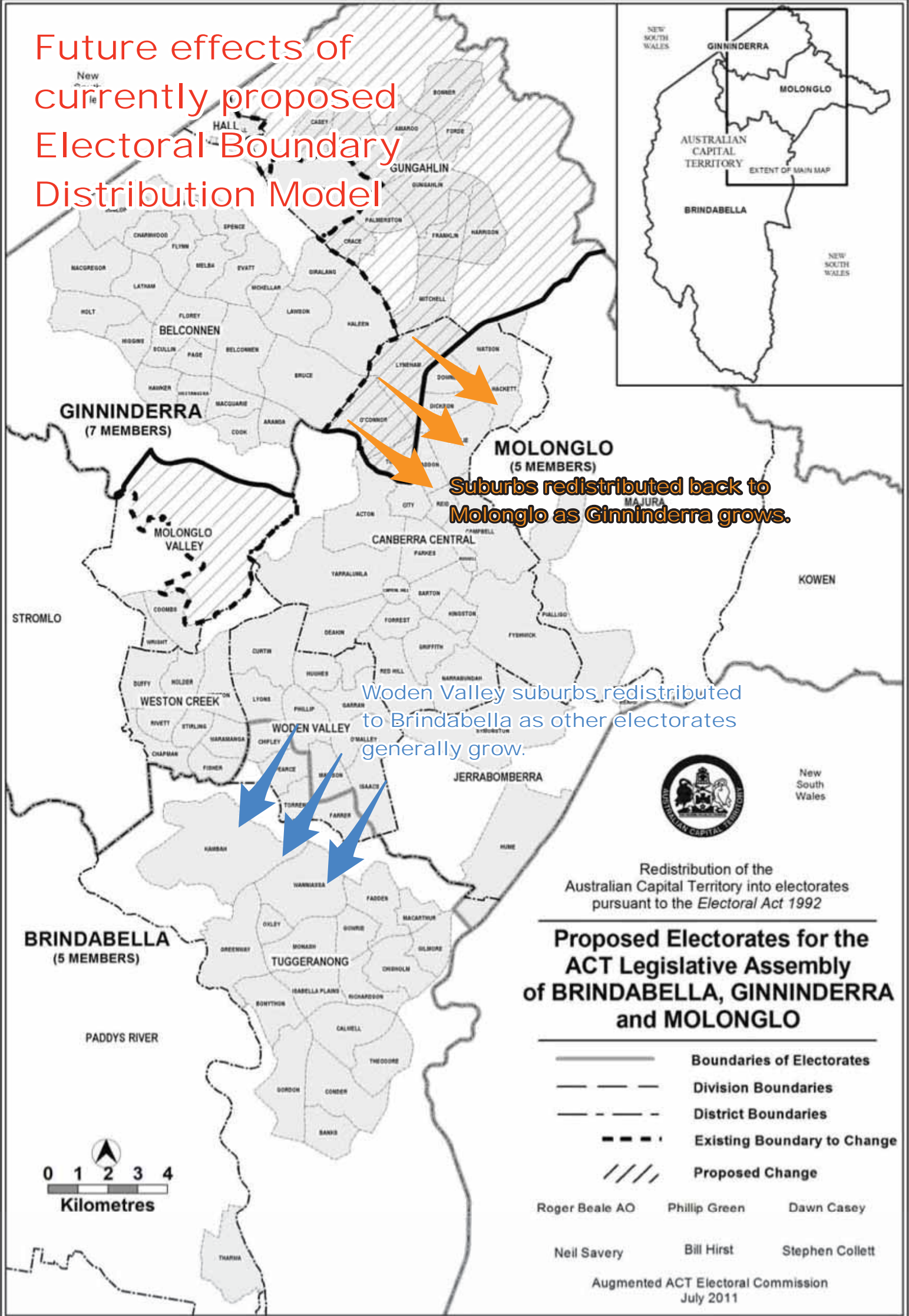
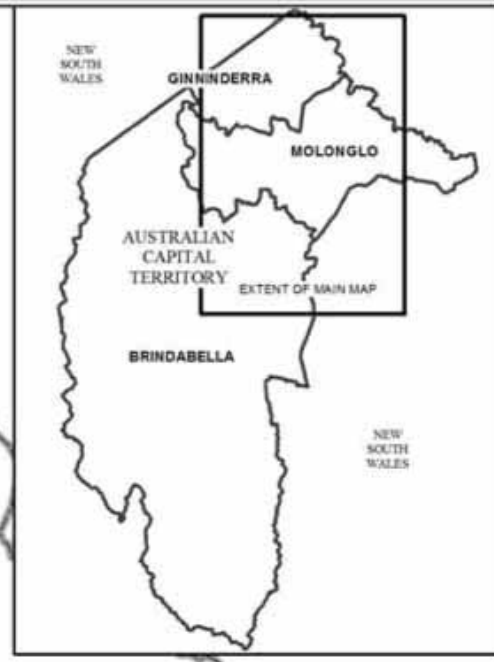
I trust that this information meets with the approval of the Augmented ACT Electoral Commission and I look forward to favorable outcomes based on my submissions from your continued deliberation on this matter.

Yours faithfully

--

Jonathon Reynolds

Future effects of currently proposed Electoral Boundary Distribution Model



Suburbs redistributed back to Molonglo as Ginninderra grows.

Woden Valley suburbs redistributed to Brindabella as other electorates generally grow.

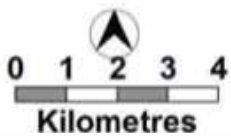


Redistribution of the Australian Capital Territory into electorates pursuant to the Electoral Act 1992

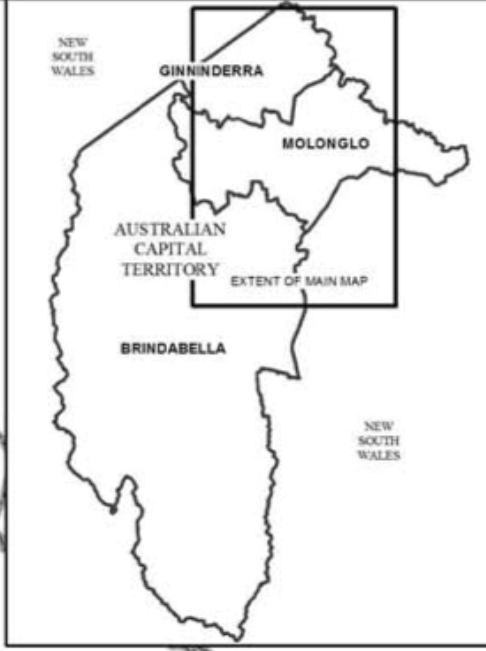
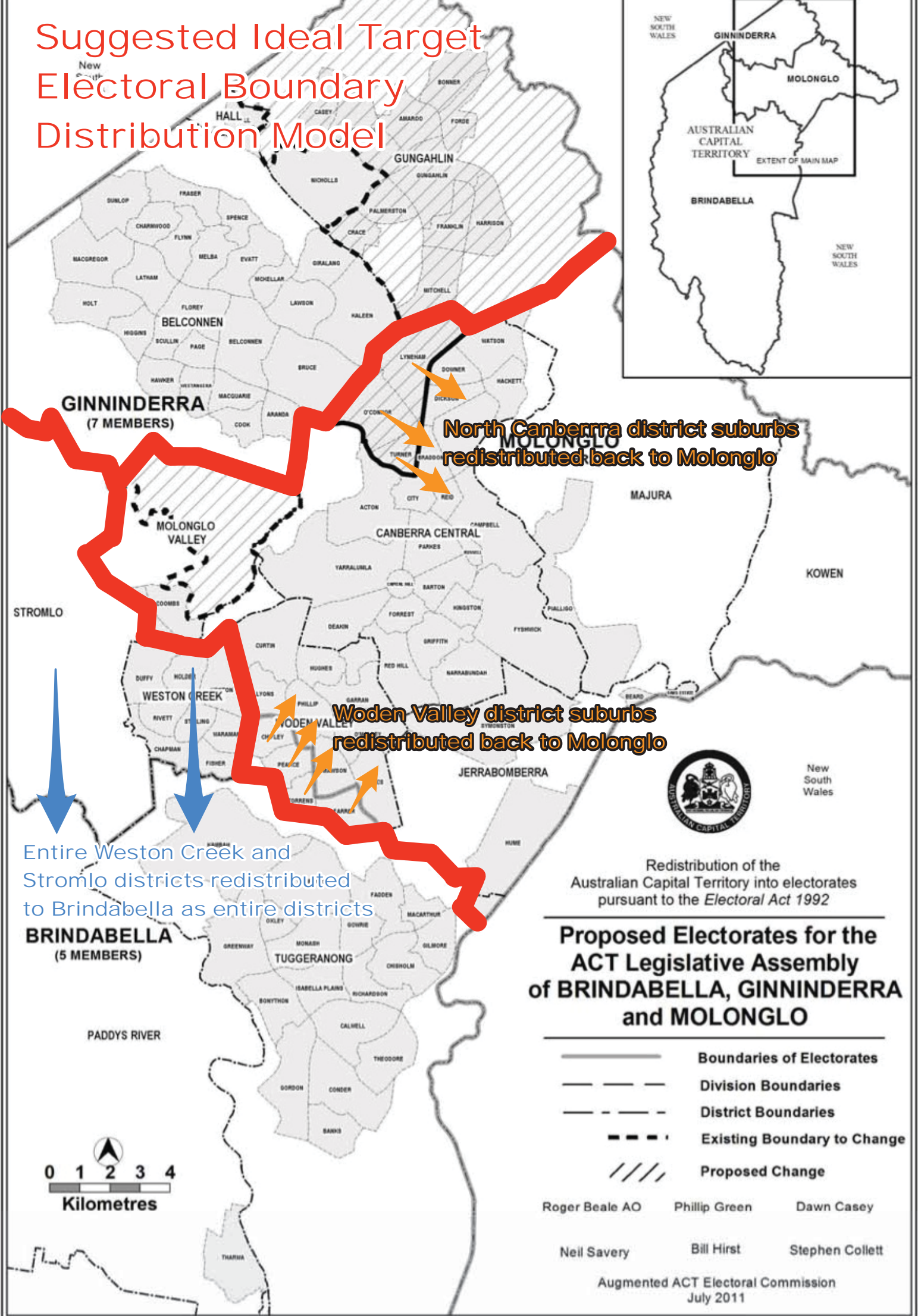
Proposed Electorates for the ACT Legislative Assembly of BRINDABELLA, GINNINDERRA and MOLONGLO

- Boundaries of Electorates
- Division Boundaries
- District Boundaries
- Existing Boundary to Change
- Proposed Change

Roger Beale AO Phillip Green Dawn Casey
 Neil Savery Bill Hirst Stephen Collett



Suggested Ideal Target Electoral Boundary Distribution Model



North Canberra district suburbs redistributed back to Molonglo

Woden Valley district suburbs redistributed back to Molonglo

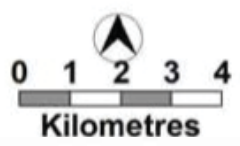
Entire Weston Creek and Stromlo districts redistributed to Brindabella as entire districts

Redistribution of the Australian Capital Territory into electorates pursuant to the Electoral Act 1992

Proposed Electorates for the ACT Legislative Assembly of BRINDABELLA, GINNINDERRA and MOLONGLO

- Boundaries of Electorates
- - - Division Boundaries
- - - District Boundaries
- - - Existing Boundary to Change
- /// Proposed Change

Roger Beale AO Phillip Green Dawn Casey
 Neil Savery Bill Hirst Stephen Collett



New South Wales

Woden Valley Community Council Inc.

The logo for Woden Valley Community Council Inc. features a stylized green graphic of a building or bridge structure with a curved line extending to the right, positioned above the text.

PO box 280 Woden 2606 ACT; email info@wvcc.org.au; ph 0420529747

ACT Electoral Commission
Ground Floor, North Building
Civic Square, London Circuit
CANBERRA CITY ACT 2601

Email: elections@act.gov.au

Dear Augmented ACT Electoral Commission,

The Woden Valley Community Council (WVCC) would like to lodge its objection to the proposed redistribution of the Electoral Boundaries and proposes a new redistribution consisting of a new seven member Brindabella electorate, a five member Ginninderra electorate and a five member Molonglo electorate.

The WVCC is disappointed with the existing electoral boundaries of Molonglo and Brindabella that split the Woden Valley district. We believe that this has adversely affected the adequate representation and rectification of issues in the Woden Valley by elected members to the ACT legislative assembly.

The WVCC proposes a good compromise for the existing electoral boundaries and 17 member assembly that also recognises the size of the current assembly is too small to govern effectively. It is suggested that the size of the assembly be increased to 21 members, which can be achieved through redistribution of the existing electoral boundaries. The WVCC proposes that:

- The Brindabella electorate should include Tuggeranong, Weston Creek and the entire Woden Valley district. There are new infill developments in the Tuggeranong and Woden Town centres and along transport corridors that will contribute to an increase in the overall population of the Brindabella electorate to support this proposal. All suburbs of the Woden Valley will then contained within the proposed new seven member electorate of Brindabella.
- For the current population growth areas of Gungahlin, West Belconnen and Molonglo Valley, the redistribution of boundaries in the future should remain flexible as the population further increases in these areas.
- Nicholls should remain in the electorate of Ginninderra with no further changes provided that the developing areas of Lawson South, West Macgregor and future West Molonglo Valley continue to provide an overall increase in population.

- The Molonglo electorate should retain Gungahlin, with exception of Nicholls, and include the future growth area of Molonglo valley which could allow for the future augmentation of the boundaries between Molonglo and Ginninderra as suburbs come online.

The table below provides a statistical summary of the WVCC proposal outlined above.

Proposed electorates : Statistical Summary

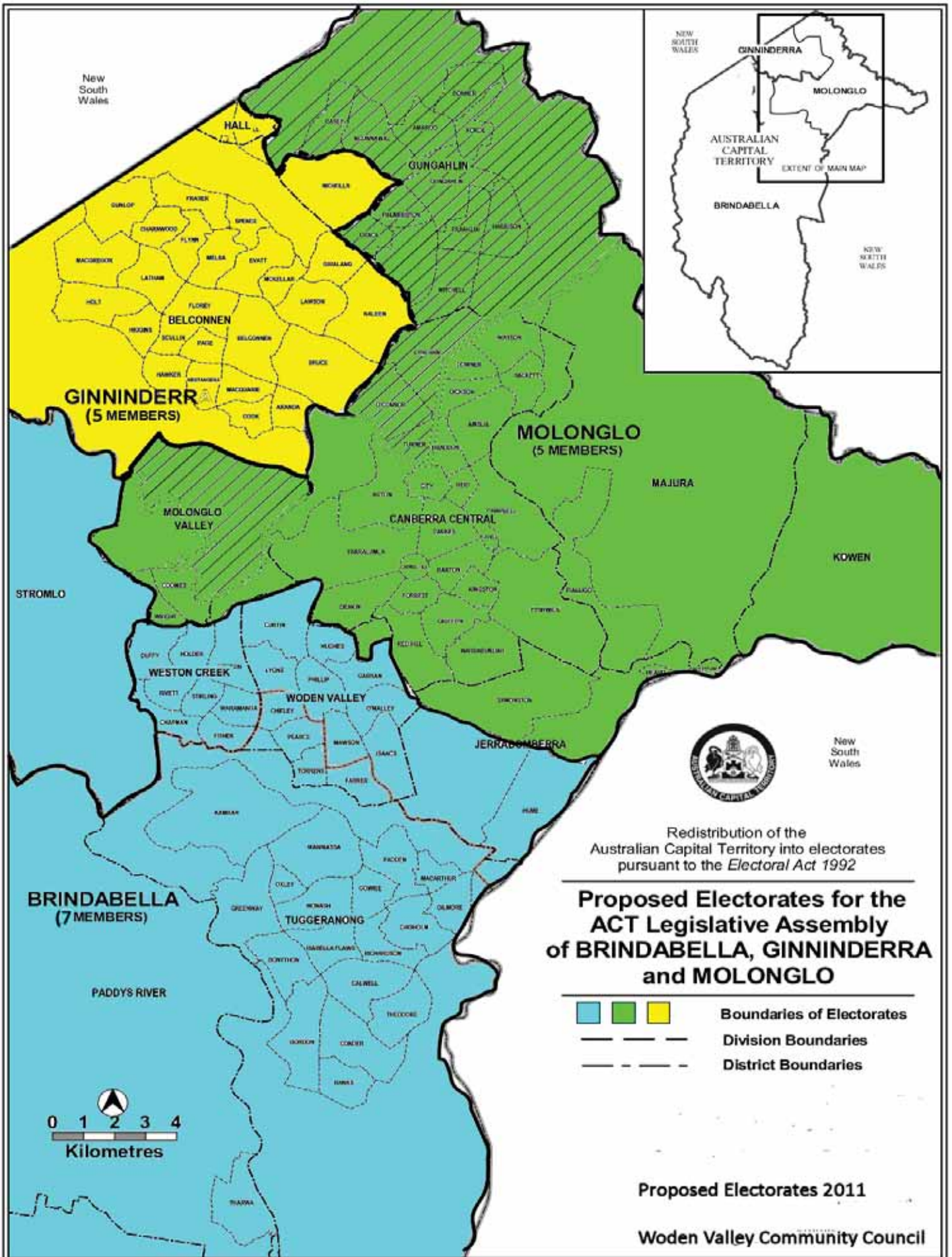
Existing Electorate	Number of Members	Enrolment March 2011	% above or below quota 2011	Project enrolment October 2012	% above or below quota 2012
Brindabella	7	104 938	2.70%	106 242	0.72%
Ginninderra	5	69 974	-4.12%	71 094	-5.63%
Molonglo	5	73 235	0.34%	78832	4.63%

Also attached for your reference is a map prepared by WVCC showing the revised electoral boundaries.

(Martin Miller)
Woden Valley Community Council

5 August 2011

Attachment: WVCC proposed revised electoral boundaries



From: Andrew Bajkowski
Sent: Friday, 5 August 2011 6:48 PM
To: Elections
Subject: Re distribution of ACT electorates - submission by Andrew Bajkowski and Caroline Wallace

Mr Phillip Green
ACT Electoral Commissioner,
ACT Electoral Commission
P O Box 272
Civic Square ACT 2601

5 August 2011

Dear Commissioners

Re distribution of ACT electorates

We recently became aware that the ACT Electoral Commission is planning to move the suburb in which we live (Turner) from the seat of Molonglo into Ginninderra. We thank the Commission for the opportunity to respond to this proposed decision.

We object to this taking place and would urge the Commission to reconsider the need for such a major distribution. Our understanding is that the original redistribution proposed moving two Gungahlin suburbs — Crace and Palmerston — into Ginninderra. However, objections by some Gungahlin residents have thus led to a new proposal that would result in a split of the inner north into two electoral seats by moving Turner, O'Connor and Lyneham (over 30,000 voters) with Gungahlin and Belconnen suburbs.

We think this is undemocratic — and we would have objected earlier had there been more consultation about this process.

In relation to guidelines the Commission is to consider in arriving at its decision, we would make the following points:

Guideline C (i) specifies the need for due consideration for the community of interests within each proposed electorate including economic, social and regional interests

By way of illustration, we as residents of Turner use sporting and recreational facilities at the Australian National University, libraries in Dickson and Civic, eat at restaurants in Braddon, Dickson and Watson and have memberships in local clubs, such as the White Eagle Club, Turner Bowling Club, Braddon Bowling club and ACT Leagues Club (Braddon). We shop at local supermarkets and purchase goods and services from small businesses in the area — hair dress salons, bike shops, chemists and newsagents. We know the proprietors personally as they have run these businesses for many years.

Strong social and family links exist between people in our suburb (as well as in O'Connor and Lyneham) with people in Ainslie, Braddon, Dickson, Watson, Downer and Watson. These are socially organic connections that sustain informal and voluntary people-to-people networks that provide important - albeit not necessarily formally recognised social services - including child care and help for the elderly. Although

redevelopment is slowly changing the local demographic, relative to newer parts of Canberra, there is still a higher proportion of people aged over 65 due to major aged care accommodation in suburbs such as Ainslie.

At the same time, North Canberra residents tend to share common social values that have a distinct electoral voice that is reflected in the current composition of the Legislative Assembly.

The implications of the proposed change for the seat of Molonglo for people in North Canberra are very significant in that this would inequitably marginalise the inner north electorally by denying our representation as a distinct geographic and social community with its own identity entitled

to a fair voice in the Legislative Assembly on issues of common interest and concern: how densification and redevelopment is managed; the future of Dickson college and other public schools; stormwater and sewerage and other infrastructure needs (for instance, cycle paths); health centres, and many other issues.

Apart from being older and established communities, we also depend on the same community facilities and public amenities, use the same parklands and ovals for recreation purposes, are members of local inner north-based clubs and associations and read the same local newspapers and newsletters. So we belong together in the same seat. As a community, we identify as North Canberra and do not distinguish ourselves as a discrete set of suburbs - we are part of the Braddon, Hackett, Dickson, Watson and Downer communities.

We do not belong with Gungahlin — their needs and interests are different to ours. Nor do we have much in common with Belconnen voters and issues their MLAs seek to address.

Guideline C (ii) requires due consideration of the means of communication and travel within each proposed electorate.

Suburbs such as Turner, Braddon, Reid and Campbell are within walking distance of the city. Issues such as cycle access, footpath safety, lighting, and parking are important and different in nature to amenity and infrastructure concerns in newer suburbs in Gungahlin and Belconnen.

Traffic management is a major concern for people in North Canberra — and our concerns are entirely different in nature to Gungahlin or Belconnen residents since we reside in areas which become heavily congested as commuters travel to major employment centres in city centre, Russell and ANU and in and around the Parliamentary Triangle, which is situated in the Molonglo electorate.

Guideline C (iii) requires due consideration of the physical features and area of each proposed electorate.

Parts of the inner north coupled with older areas of the inner south comprise the bulk of areas in Canberra with recognised heritage streets and buildings that are governed by relevant zoning and planning controls. This gives these areas a particular character ; it is also important for the efficacy of public consultation processes that the ACT government engaged us on, especially as it revises the Territory Plan and devises new neighbourhood master plans. Voting in the Assembly is important for public accountability in terms of how well this is managed.

Turner, Braddon, Lyneham and Dickson are affected by the Territory Government housing re-development program. Voters share similar concerns related to the quality

of housing, privacy and the preservation of green space. The Northbourne Precinct proposal separately envisages high rise unit development on a significant scale. To separate voters on one side of Northbourne Avenue from the other would not be fair.

Conclusion

If the Assembly is to more effectively manage and balance issues and interests affecting different parts of the city and its distinct communities, it is more sensible to maintain like-with-like and minimise electoral boundary changes given the very different nature between newer and older parts of Canberra. The proposal to move Crace and Palmerston was an equitable and sensible one given the interests the Commission had to balance (which it did very well). On the other hand, the proposal to expand Ginniderra seems totally disproportionate to the balancing of interests that all of us seek.

Yours sincerely

Andrew Bajkowski

And

Caroline Wallace

From: Joan Cornish

Sent: Monday, 1 August 2011 11:12 PM

To: Division - Fraser - ACT; molongolo@aec.gov.au; gungahlin@aec.gov.au

Subject: ACT Electoral Boundary proposed changes

To whom it may concern at the Electoral Commission,

Thank you for the opportunity to comment on proposals to change electoral boundaries in the ACT.

This email is to strongly oppose the intention to remove Turner, O'Connor and Lyneham from Molongolo to Gungahlin electorates.

1. The inner north suburbs are part of a cohesive and dynamic community, developed from like interests, philosophies and demographics, over a long period of time.
2. Turner, O'Connor and Lyneham have been established for well over 50 years. Gungahlin suburbs are very new by comparison. By definition almost, the older suburbs have different interests and local problems to those of more recently established suburbs. The older Gungahlin suburbs (still less than 15-20 years old) have a great deal in common with Belconnen suburbs.
3. The demographics of Turner, O'Connor and Lyneham fit perfectly with those of the rest of Molongolo. The demographics of inner Gungahlin fit well with those of Belconnen.
4. If Turner, O'Connor and Lyneham were moved to Gungahlin, they would have different issues to those of the rest of the large 7 member electorate. A tiny voice in a huge pond. The democratic right of these 3 suburbs would be eroded considerably. Given the best will in the world, their voice would not be heard.
5. On the other hand, Gungahlin residents, with similar issues and history to those of Belconnen residents would be heard. Their democratic rights would be protected.

Whilst I sympathise with the nominated Gungahlin residents opposed to being moved, their move would be less disruptive than moving the inner north old suburbs. They would retain good and strong representation from like-minded and similar issues people. They would not lose their democratic rights.

I strongly ask that you consider these points and do not approve the proposal to split the Molongolo electorate. The Inner North has a very strong character and history. If its character is eroded it will be a great loss for Canberra of an artistic hub with great community cohesion.

Canberra is undergoing great development and change. The qualities of the Bush Capital is why many live here. Should this change Canberra will become undistinguishable from other monolithic suburbs across Australia. I particularly support any measures to keep a strong proportion of open spaces and parkland. While this is not directly linked to this issue these sorts of values could be eroded by the proposed changes.

Finally the Government has yet to outline the benefits to Turner OConnor and Lyneham of the proposed change.

I look forward to your response.

Warm regards

Joan Cornish
Watson

Supplimentary comments after having received a copy of the Augmented Electoral Commission's reasons for proposed redistribution

Thank you Linzi

I have read the document and it seems that in each case the objections have been put aside for largely insufficient reason and a faulty logic.

Eg The whole case seems to rely on numbers only. Eg The proposed move Turner, O'Connor and Lyneham from Molongolo to Gungahlin electorates is put forward as the best out of a bad range of options.

I think this is a negative move for the inner north and the suburbs concerned and should be rethought.

There is a dramatic level of growth and change going on in Canberra – some of which seems set to upset the character of older suburbs who are in fact the heart of Canberra – and homogenise these suburbs with the new face of Canberra which is of an entirely different character. Less trees an green space, bigger houses and lack of an identity being the most obvious.

I hope the committee will rethink
Regards

Joan