



Redistribution Report



ACT Legislative Assembly

Electoral Boundaries

Redistribution 2011





Redistribution Report

ACT Legislative Assembly

Electoral Boundaries

Redistribution 2011



ISBN 978 0 642 60574 0

© Australian Capital Territory, Canberra 2011

This work is copyright. Apart from any use as permitted under the Copyright Act 1968, no part may be reproduced by any process without written permission from the Territory Records Office, Community and Infrastructure Services, Territory and Municipal Services, ACT Government,

GPO Box 158, Canberra City ACT 2601.

Produced by Publishing Services for the

ACT Electoral Commission

PO Box 272, Civic Square ACT 2608.

Phone: 02 6205 0033

Web: www.elections.act.gov.au

Email: elections@act.gov.au

Publication No 11/1322

<http://www.act.gov.au>

Telephone: Canberra 132 281

Mr Simon Corbell MLA
Attorney General
ACT Legislative Assembly
London Circuit
CANBERRA ACT 2601

ACT Electoral Commission
North Building, Civic Square
London Circuit, Canberra City ACT 2601
PO Box 272, Civic Square ACT 2608
Ph: 02 6205 0033 Fax:02 6205 0382
Email: elections@act.gov.au
Homepage: www.elections.act.gov.au

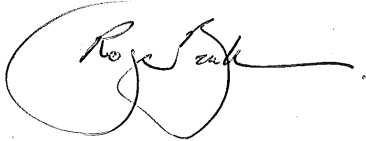
Dear Attorney General

Redistribution report of Augmented ACT Electoral Commission

I submit to you the report of the Augmented ACT Electoral Commission concerning the 2011 redistribution of the Australian Capital Territory Legislative Assembly electoral boundaries.

This report is submitted in accordance with section 53 of the Electoral Act 1992.

Yours sincerely



Roger Beale AO
Chairperson

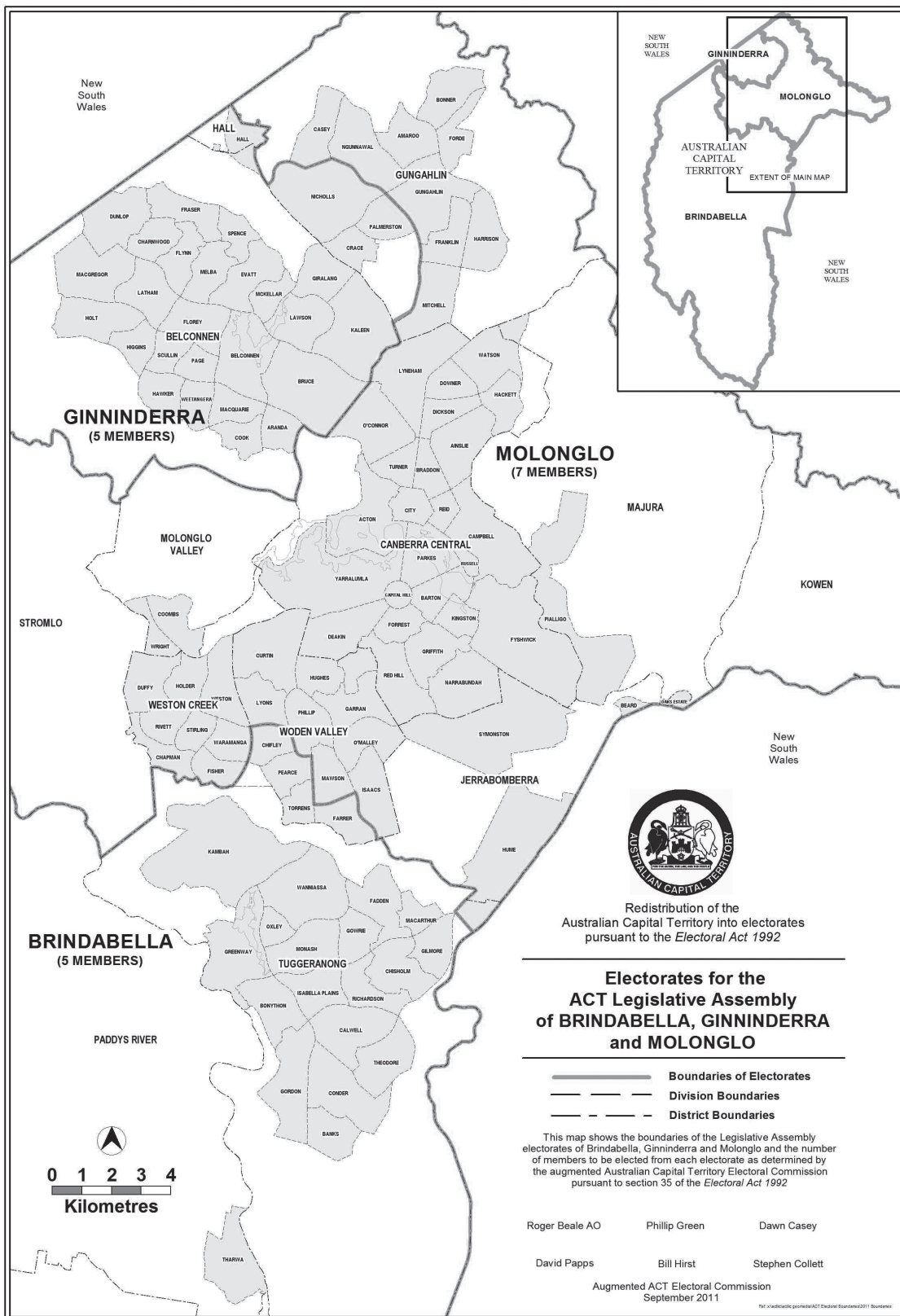
24 October 2011

Contents

Determination by the Augmented ACT Electoral Commission	1
Constitution of final ACT Legislative Assembly electoral boundaries	5
Statement by the Augmented ACT Electoral Commission.....	11
Augmented ACT Electoral Commission’s proposed redistribution	29
Redistribution Committee’s proposed redistribution	51
Appendices	75
Appendix A: Composition of the Augmented ACT Electoral Commission and the Redistribution Committee	76
Appendix B: Redistribution timetable.....	77
Appendix C: Projected electoral enrolment statistics methodology	78
Appendix D: Suggestions.....	83
Appendix E: Objections to the Redistribution Committee’s proposed redistribution.....	84
Appendix F: Objections to the Augmented Electoral Commission’s proposal	85

**Determination
by the Augmented ACT Electoral Commission**





Final boundaries as determined by the Augmented ACT Electoral Commission.

Electoral (Determination of Redistribution of Electorates for the ACT Legislative Assembly) Notice 2011

Notifiable instrument NI 2011 —

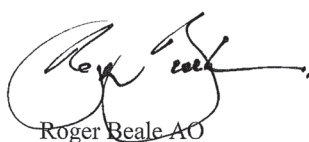
made under the

Electoral Act 1992, s 35 (Redistribution of electorates)

The Augmented Australian Capital Territory Electoral Commission determines that:

- (a) The boundaries of the Legislative Assembly electorates into which the Australian Capital Territory is to be redistributed are as shown on the map certified by the members of the Augmented Commission and lodged in file number 2011/9687 at the office of the Australian Capital Territory Electoral Commissioner; and
- (b) The names of the electorates and the number of members of the Legislative Assembly to be elected from each electorate, are:
 - (i) Brindabella (5 members);
 - (ii) Ginninderra (5 members); and
 - (iii) Molonglo (7 members).

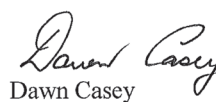
A simplified map of the electoral boundaries is attached to this notice for information purposes.



Roger Beale AO



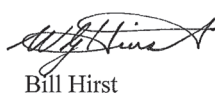
Phillip Green



Dawn Casey



David Papps



Bill Hirst



Stephen Collett

Augmented Australian Capital Territory Electoral Commission

29 September 2011

Constitution of final ACT Legislative Assembly electoral boundaries



Overall statistical summary of final boundaries

Quotas and maximum and minimum numbers of electors

	ACT	5-Member electorates	7-Member electorate
31 August 2011			
Actual enrolment	247731		
Quotas		72862	102006
Not more than 110% of the quota		80148	112206
Not less than 90% of the quota		65576	91806
October 2012			
Projected enrolment	256168		
Quotas		75343	105480
Not more than 105% of the quota		82877	116028
Not less than 95% of the quota		67809	94932

Existing electorates: Statistical summary

Existing electorate	Number of members	Enrolment August 2011	% above or below quota 2011	Projected enrolment October 2012	% above or below quota 2012
Brindabella	5	71233	-2.24%	72717	-3.49%
Ginninderra	5	69743	-4.28%	71098	-5.63%
Molonglo	7	106755	4.66%	112353	6.52%
Total	17	247731		256168	

New electorates: Statistical summary

New electorate	Number of members	Enrolment August 2011	% above or below quota 2011	Projected enrolment October 2012	% above or below quota 2012
Brindabella	5	71233	-2.24%	72717	-3.49%
Ginninderra	5	73795	1.28%	75418	0.10%
Molonglo	7	102703	0.68%	108033	2.42%
Total	17	247731		256168	

Final composition of the electorate of Brindabella

Suburb	Actual persons enrolled 31 August 2011	Projected persons enrolled 20 October 2012	% change
Banks	3371	3951	17.21%
Bonython	2670	2831	6.03%
Calwell	4193	4402	4.98%
Chifley	1691	1764	4.32%
Chisholm	3830	3709	-3.16%
Conder	3525	4084	15.86%
Fadden	2477	2323	-6.22%
Farrer	2560	2489	-12.50%
Gilmore	2029	1964	-3.20%
Gordon	5417	6193	14.33%
Gowrie	2433	2371	-2.55%
Greenway	1094	1199	9.60%
Isabella Plains	2959	3008	1.66%
Kambah	11677	11101	-4.93%
Macarthur	1171	1184	1.11%
Monash	4178	4369	4.57%
Oxley	1302	1309	0.54%
Pearce	1896	1925	1.53%
Richardson	2238	2166	-3.22%
Theodore	2704	2898	7.17%
Torrens	1669	1677	0.48%
Tuggeranong - SSD Bal	26	22	-15.38%
Wanniassa	5893	5591	-5.12%
Remainder of ACT	230	187	-18.70%
Total	71233	72717	2.08%
Quota	72862	75343	
Variation from quota	-2.24%	-3.49%	

Constitution of final ACT Legislative Assembly electoral boundaries

Final composition of the electorate of Ginninderra

Suburb	Actual persons enrolled 31 August 2011	Projected persons enrolled 20 October 2012	% change
Aranda	1811	1836	1.38%
Belconnen Town Centre	2499	2843	13.77%
Belconnen - SSD Bal	27	30	11.11%
Bruce	3149	3659	16.20%
Charnwood	2098	2052	-2.19%
Cook	2153	2180	1.25%
Crace	163	112	-31.29%
Dunlop	4519	5218	15.47%
Evatt	4022	3865	-3.90%
Florey	3605	3656	1.41%
Flynn	2592	2458	-5.17%
Fraser	1611	1541	-4.35%
Giralang	2556	2425	-5.13%
Hall	234	228	-2.56%
Hawker	2181	2102	-3.62%
Higgins	2255	2137	-5.23%
Holt	3448	3602	4.47%
Kaleen	5601	5330	-4.84%
Latham	2752	2630	-4.43%
McKellar	2130	2161	1.46%
Macgregor	3440	4088	18.84%
Macquarie	1806	1819	0.72%
Melba	2418	2448	1.24%
Nicholls	4983	5151	3.37%
Page	1987	2014	1.36%
Palmerston	3892	4212	8.22%
Scullin	1970	1859	-5.63%
Spence	1934	1836	-5.07%
Weetangera	1959	1926	-1.68%
Total	73795	75418	2.20%
Quota	72862	75343	
Variation from quota	1.28%	0.10%	

Final composition of the electorate of Molonglo

Suburb	Actual persons enrolled 31 August 2011	Projected persons enrolled 20 October 2012	% change
Acton	346	368	6.36%
Ainslie	3796	3973	4.66%
Amaroo	3524	3688	4.65%
Barton	857	928	8.28%
Bonner	370	523	41.35%
Braddon	2741	3157	15.18%
Campbell / Duntroon / Majura	3918	3943	0.64%
Casey	449	723	61.02%
Chapman	2171	2087	-3.87%
City	966	1060	9.73%
Curtin	3861	3975	2.95%
Deakin	2120	2127	0.33%
Dickson	1429	1482	3.71%
Downer	2455	2498	1.75%
Duffy	2381	2260	-5.08%
Fisher	2309	2314	0.22%
Forde	887	862	-2.82%
Forrest	1119	1156	3.31%
Franklin	1549	2961	91.16%
Fyshwick	24	21	-12.50%
Garran	2263	2342	3.49%
Griffith	3079	3306	7.37%
Gungahlin	3103	3513	13.21%
Gungahlin / Hall - SSD Bal	16	16	0.00%
Hackett	2243	2299	2.50%
Harman	30	38	26.67%
Harrison	2514	2790	10.98%
Holder	2057	1978	-3.84%
Hughes	2119	2196	3.63%
Hume	6	7	16.67%
Isaacs	1860	1948	4.73%
Jerrabomberra	9	9	0.00%
Kingston	2231	2368	6.14%
Kowen	22	26	18.18%
Lyneham	3304	3451	4.45%
Lyons	1825	1873	2.63%
Mawson	2165	2205	1.85%
Mitchell	8	8	0.00%
Molonglo Valley - SSD Bal	3	4	33.33%
Narrabundah	4133	4298	3.99%
Ngunnawal	5959	6187	3.83%
Oaks Estate	199	174	-12.56%

Constitution of final ACT Legislative Assembly electoral boundaries

Constitution of final ACT Legislative Assembly electoral boundaries

Suburb	Actual persons enrolled 31 August 2011	Projected persons enrolled 20 October 2012	% change
O`Connor	3793	3942	3.93%
O`Malley	654	685	4.74%
Parkes	3	3	0.00%
Phillip	1368	1558	13.89%
Pialligo	92	95	3.26%
Red Hill	2285	2340	2.41%
Reid	1085	1139	4.98%
Rivett	2369	2383	0.59%
Russell	0	0	0.00%
Stirling	1489	1433	-3.76%
Stromlo	4	5	25.00%
Symonston	323	333	3.10%
Turner	2487	2535	1.93%
Waramanga	1922	1825	-5.05%
Watson	3590	3733	3.98%
Weston	2422	2416	-0.25%
Weston Creek / Stromlo - SSD Bal	28	26	-7.14%
Yarralumla	2369	2440	3.00%
Total	102703	108033	5.19%
Quota	102006	105480	
Variation from quota	0.68%	2.42%	

**Statement by the
Augmented ACT Electoral Commission**



Statement by the Augmented ACT Electoral Commission of its reasons for its redistribution of the ACT Legislative Assembly electoral boundaries

This statement by the Augmented ACT Electoral Commission sets out the results of the Augmented Commission's investigation of the objections against the Augmented Commission's proposal under section 52 of the *Electoral Act 1992* and sets out the reasons for the Augmented Commission's redistribution of the ACT Legislative Assembly electoral boundaries under section 35 of the Electoral Act.

Summary of the redistribution determined by the Augmented ACT Electoral Commission

For the first time in the history of the ACT's redistribution process, two very different sets of proposed boundaries were put before the ACT community for comment. The first option, proposed by the Redistribution Committee, opted for a "minimal change" that would further split the Gungahlin district between two electorates. The second option, proposed by the Augmented Commission, would keep the Gungahlin district in one electorate by moving the location of the 7-Member electorate while splitting the north Canberra suburbs of Lyneham, O'Connor and Turner from the rest of north Canberra. Both options generated public submissions in favour of and opposed to each option, particularly in relation to the splitting of districts. The Augmented Commission therefore had a difficult decision to make, given that there were no available options that would have avoided the splitting of any districts. On balance, for the reasons set out below, the Augmented Commission has decided to adopt the "minimal change" proposal put forward by the Redistribution Committee.

On 5 May 2011 the ACT Redistribution Committee proposed that the existing ACT Legislative Assembly electoral boundaries be altered so that the suburbs of Palmerston and Crace would be transferred from the 7-Member electorate of Molonglo to the 5-Member electorate of Ginninderra; and the portion of the district of Molonglo Valley north of the Molonglo River would be transferred from Ginninderra to Molonglo. The Redistribution Committee did not propose to alter the existing 5-Member Brindabella electorate.

After considering the 23 written objections to the electoral boundaries proposed by the Redistribution Committee (including one late submission) and the further spoken and written submissions presented at the public hearing on 24 June 2011, on 8 July 2011 the Augmented Commission proposed that the existing boundaries be altered so that Ginninderra would be the 7-Member electorate, consisting of Belconnen, Gungahlin and Hall and the Canberra Central suburbs of Lyneham, O'Connor and Turner. The Augmented Commission did not propose to alter the existing 5-Member Brindabella electorate. Molonglo would become a 5-Member electorate and would include all of the district of Molonglo Valley.

After considering the 83 written objections to the electoral boundaries proposed by the Augmented Electoral Commission (including one late submission) and the further spoken and written submissions presented at the public hearing on 31 August 2011, the Augmented Commission decided to adopt the boundaries proposed by the Redistribution Committee.

Therefore the Augmented Commission intends to determine, in accordance with section 35 of the Electoral Act 1992, that the ACT is to be divided into three electorates as follows:

BRINDABELLA, a 5-Member electorate comprising the district of Tuggeranong (excluding the suburb of Hume), the Woden Valley suburbs of Chifley, Farrer, Pearce and Torrens and the districts of Booth, Coree, Cotter River, Paddys River, Rendezvous Creek, Tennent and Mount Clear;

GINNINDERRA, a 5-Member electorate comprising the districts of Belconnen and Hall (including the entire Village of Hall) and the Gungahlin suburbs of Crace, Nicholls and Palmerston (including the portion of the district of Gungahlin bounded by the suburbs of Palmerston and Crace and Barton Highway and Gungahlin Drive); and

MOLONGLO, a 7-Member electorate comprising the districts of Gungahlin (excluding the suburbs of Crace, Nicholls and Palmerston and the portion of the district of Gungahlin bounded by the suburbs of Palmerston and Crace and Barton Highway and Gungahlin Drive), Canberra Central, Molonglo Valley, Weston Creek, Woden Valley (excluding the suburbs of Chifley, Farrer, Pearce and Torrens), Jerrabomberra (including the entire suburb of Hume), Kowen, Majura, and Stromlo.

The Augmented Commission comprises the members of the ACT Electoral Commission (Chairperson, Mr Roger Beale AO; Electoral Commissioner, Mr Phillip Green; and Commission Member, Ms Dawn Casey) and members of the Redistribution Committee (the Chief Planning Executive, ACT Planning and Land Authority (Mr David Papps), the Surveyor-General (Mr Bill Hirst) and a person appointed by the ACT Electoral Commission, the Regional Director, ACT Office, Australian Bureau of Statistics (Mr Stephen Collett)).

Objections to the Augmented Electoral Commission's proposal

The Augmented Commission met on 18 August 2011 to investigate 82 objections made in accordance with section 52 of the Electoral Act to the Augmented Commission's proposed redistribution of the ACT Legislative Assembly's electoral boundaries published on 8 July 2011. The Augmented Commission also agreed to consider an additional objection received after the close of the objection period on 5 August 2011.

Note that the term "objections" is used in the Electoral Act to denote submissions made in response to proposed redistributions published by the Redistribution Committee and the Augmented Commission. In practice, these submissions may be opposed to or supportive of the proposed redistributions. Therefore use of the word "objections" does not necessarily imply that a submission denoted as an objection is opposed to the proposal under review.

The objections were made by:

Objections from organisations

ACT Branch of the Proportional Representation Society	Gungahlin Community Council
ACT Greens	North Canberra Community Council
Downer Community Association	Turner Residents Association
Friends of O'Connor Association	Woden Valley Community Council

Objections from individuals

Arena, A	Field, R	Nerdal, L
Bajkowski, A & Wallace, C	Ford, A	Newton, G & J
Bajkowski, E	Foster, M	Nicholson, P
Bajkowski, J	Garvey, J & Krippner, K	Nobbs, C
Ballard, J & P	Halliday, B	Orrell, R
Baxter, B	Handley, C	Pardoe, C
Boon, J	Haynes, N	Parsons, N
Brink, L	Helyar, G	Pipkorn, J
Bromwich, H & L	Helyar, K	Rayner, P
Brown, E	Hodgkin, S	Reynolds, J
Calvo, J	Hodgson, F & J	Rossel, T
Chevalier, B	Hopkins, N	Ruecroft, T I
Cornish, J	Jones, R	Ryan, M
Cox, K	Kandula, A	Saraswati, A
Davidson, E	Kee, C	Schranz, H (<i>late submission</i>)
Davidson, G	Knowler, T	Shorthouse, D
Davidson, S	Larson, R	Smith, T
Davies, N	MacDonald, B	Swainson, M
de Chazal, J	Manns, L	Tager, J
de Vogel, K	Marsh, S	Taylor, P
Dee, B	McAllister, G	Thwaites, M
Edwards, R	McDermid, I	Turbayne, & Campbell, V
Evans, M	McKay, M	Walkley, S
Ferguson, S	McLennan, L	Walsh, M
Ferris, D	Meyer, B	Zambon, G

Copies of the objections can be obtained from the Elections ACT website at:

www.elections.act.gov.au or from the office of the ACT Electoral Commission.

As some matters raised in the objections were not raised in earlier suggestions given to the Redistribution Committee or objections given to the Augmented Commission, the Augmented Commission was required to hold a public hearing into the objections under section 49(2) of the Electoral Act. This public hearing was held at 3.00 pm on 31 August 2011 at the Reception Room, ACT Legislative Assembly, Civic Square, London Circuit, Canberra City.

The following persons made oral submissions at the public hearing:

- ◇ Mr Ian McDermid;
- ◇ Ms Anne McMahon, on behalf of the Turner Residents' Association;
- ◇ Mr Martin Miller, on behalf of the Woden Valley Community Council;
- ◇ Mr John Symond, on behalf of Friends of O'Connor;
- ◇ Ms Shane Marsh;
- ◇ Mr Harvey Bromwich;
- ◇ Mr Tom Anderson, on behalf of the Weston Creek Community Council;
- ◇ Mr Graham Jensen, on behalf of the ACT Greens;
- ◇ Mr Kevin Cox, on behalf of the Gungahlin Community Council;
- ◇ Mr Neil Parsons;
- ◇ Mr Mike Hettinger, on behalf of the North Canberra Community Council;
- ◇ Ms Maryanne McKay;
- ◇ Mr Andrew Bajkowski; and
- ◇ Mr Bogey Musidlak, on behalf of the Proportional Representation Society of Australia (ACT Branch).

Mr Ian Ruecroft was unable to be present and requested that a statement be read out.

The Canberra Liberals were unable to send a representative and requested that a statement be read out. This statement argued in favour of the "least change" option as proposed by the Redistribution Committee.

The Augmented Commission met immediately after the public hearing to consider the matters raised at the hearing and in the objections received. The Augmented Commission met again on 1 September 2011 to make its final decision.

Summaries of objections

A brief summary of the 83 objections follows.

Objections against the Augmented Electoral Commission's proposal to make Ginninderra a 7-Member electorate consisting of Belconnen and Gungahlin and the suburbs of Lyneham, O'Connor and Turner

Fifty-eight of the objections can be broadly described as opposed to the Augmented Electoral Commission's proposal to make Ginninderra a 7-Member electorate consisting of Belconnen and Gungahlin and the suburbs of Lyneham, O'Connor and Turner and supportive of the Redistribution Committee's proposal to transfer Crace and Palmerston from Molonglo to Ginninderra. Some of the main points put forward are summarised here:

- ◇ The inner north suburbs constitute a strong community of interest that should not be divided between electorates;
- ◇ Given that some districts must be split, it is preferable to split newly developing communities, such as Gungahlin, than it is to split older established areas like north Canberra;
- ◇ Inner north Canberra is physically separated from Belconnen and Gungahlin;
- ◇ People in Lyneham, O'Connor and Turner use the services and amenities of adjacent north Canberra suburbs, particularly Dickson and Civic;
- ◇ To include Lyneham, O'Connor and Turner in the same electorate as Gungahlin and Belconnen would seriously impair the representation of the residents of Lyneham, O'Connor and Turner on account of their smaller relative size;
- ◇ The suburbs of inner north Canberra, including Lyneham, O'Connor and Turner, have very little in common with the new areas of Gungahlin;
- ◇ Northbourne Avenue does not separate Lyneham, O'Connor and Turner from the adjacent north Canberra suburbs;
- ◇ The proposed move is inconsistent with the Canberra Spatial Plan that treats the 7 km radius of the city centre as a specific planning area;
- ◇ The Redistribution Committee proposal (to transfer only Crace and Palmerston) minimises disruption to electors and provides a measure of certainty;
- ◇ The statutory requirement to duly consider the boundaries of existing electorates indicates that boundary changes should be kept to a minimum; and
- ◇ "Ginninderra electorate has a significantly different age and social demographic to the Inner North electorate of Molonglo – Ginninderra electorate has a much younger population than the older suburbs of Lyneham, O'Connor and Turner" [Susan Davidson].

Objections in favour of including all Gungahlin suburbs in one electorate

Nineteen of the 83 objections argued in favour of including all Gungahlin suburbs in one electorate and/or in favour of combining all the suburbs of Gungahlin and Belconnen in one electorate. The main points put forward in support of this view were that Crace, Nicholls and Palmerston are integral parts of the Gungahlin community and they should be included in the same electorate as all other Gungahlin suburbs, and that all the Gungahlin suburbs form a community of common interests.

These submissions did not tend to specifically support the inclusion of Lyneham, O'Connor and Turner in an electorate with Gungahlin and/or Belconnen.

Objections raising issues outside the scope of the redistribution

Some objections raised issues that are beyond the power of the Augmented Electoral Commission to consider, including:

- ◇ Changing the number of Members to be elected in the various electorates; or
- ◇ Making changes that would place one or more electorates outside the +/- 5% range at the time of next election, for example, creating a 7-Member electorate based only on Gungahlin and Belconnen.

Objections against the proposal to split Woden Valley suburbs between the electorates of Molonglo and Brindabella

Some objections were against the proposal to leave unchanged the boundary between the electorates of Molonglo and Brindabella, which would leave the suburbs of the district of Woden Valley split between the two electorates.

- ◇ Mr Martin Miller, on behalf of the Woden Valley Community Council, proposed making Brindabella a 7-Member electorate consisting of all of Tuggeranong, Woden and Weston Creek, with Ginninderra retained as a 5-Member electorate consisting of Belconnen, Nicholls, Palmerston and Crace, with Molonglo becoming a 5-Member electorate including the remainder of Gungahlin with North and South Canberra.
- ◇ Mr Jonathon Reynolds stated his preferred option was to transfer all Woden Valley suburbs to the electorate of Molonglo and to transfer all Weston Creek suburbs south of Hindmarsh Drive to the electorate of Brindabella.
- ◇ Mr Ian McDermid suggested making Molonglo a 5-Member electorate consisting of North Canberra, South Canberra and Woden Valley; making Brindabella a 5-Member electorate consisting of Tuggeranong and the Weston Creek suburbs of Chapman, Fisher, Rivett, Stirling and Waramanga; and making Ginninderra a 7-Member electorate consisting of Gungahlin, Hall, Belconnen, Molonglo Valley, Stromlo and the northern Weston Creek suburbs of Duffy, Holder and Weston.

Discussion at the public hearing

The discussion at the public hearing covered many of the issues raised by the written objections to the Augmented Commission's proposed redistribution. Particular matters raised at the hearing included discussion on the following issues:

- ◇ The inevitability of at least one ACT district being split by the redistribution;
- ◇ Options for boundaries other than those proposed by the Redistribution Committee or the Augmented Electoral Commission;
- ◇ The need for north Canberra to have good representation as it is experiencing a number of planning issues;
- ◇ The desirability of avoiding the splitting of north Canberra between Molonglo and Ginninderra; and
- ◇ The desirability of avoiding the splitting of Gungahlin between Molonglo and Ginninderra; and
- ◇ The desirability or otherwise of minimal change.

Investigation of the objections and discussion at the public hearing

In investigating the objections to the Augmented Commission's proposed boundaries, the Augmented Commission was mindful that its deliberations were subject to and constrained by section 36 of the Electoral Act.

Section 36 of the Electoral Act sets out the criteria under which a redistribution is to be conducted. This section prescribes that the Augmented Commission, in making a redistribution of electorates, shall:

- (a) ensure that the number of electors in an electorate immediately after the redistribution is within the range permitted by the *Australian Capital Territory (Self-Government) Act 1988* (Cwlth), section 67D(2) [not greater than 110%, or less than 90%, of the quota];
- (b) endeavour to ensure, as far as practicable, that the number of electors in an electorate at the time of the next general election of members of the Legislative Assembly will not be greater than 105%, or less than 95%, of the expected quota for the electorate at that time ascertained in accordance with the formula set out in the *Australian Capital Territory (Self-Government) Act 1988* (Cwlth), section subsection 67D(1); and
- (c) duly consider —
 - (i) the community of interests within each proposed electorate, including economic, social and regional interests;
 - (ii) the means of communication and travel within each proposed electorate;
 - (iii) the physical features and area of each proposed electorate;
 - (iv) the boundaries of existing electorates; and
 - (v) the boundaries of divisions and sections fixed under the *Districts Act 2002*.

The Augmented Commission considers that the 10% tolerance set out in the Self-Government Act and the 5% tolerance set out in the Electoral Act aim to provide, in a

practical way, for “one vote, one value” in ACT elections. That is, each person’s vote should be worth the same as any other person’s vote.

The Augmented Commission considers that section 36(b) places on it a heavy responsibility to ensure as far as practicable that the number of voters will not fall outside these two numerical tolerances, and that as a result this obligation must be met even if it implies some difficulty in fully satisfying one or more of the subjective criteria which the Augmented Commission must duly consider under section 36(c) of the Electoral Act. Nevertheless, the Augmented Commission also considers that it must give as much weight to the section 36(c) criteria as possible, within the constraints of meeting the numerical tolerances.

Contrary to some assertions made in objections to the Augmented Commission’s proposed redistribution, the Augmented Commission considers that the requirement in section 36(b) may only be met by proposing electorate boundaries that fall within the +/-5% tolerance at the time of the next election. The Augmented Commission notes that this interpretation of this requirement is the same as the interpretation placed on the analogous Commonwealth Electoral Act provision by Commonwealth redistribution authorities.

The Augmented Commission noted that the Electoral Act does not prioritise the criteria listed in section 36(c). By contrast, the equivalent clause in the Commonwealth Electoral Act provides that consideration of the boundaries of existing electorates is subordinate to the other criteria.

Whether to leave the current boundaries unchanged

As discussed in the statement published by the Augmented Commission in July 2011, the Augmented Commission noted that Ginninderra was projected to be 5.63% below the quota and Molonglo was projected to be 6.52% above the quota at the time of the 2012 election.

Consequently the Augmented Commission agreed with the Redistribution Committee that the size of the Molonglo electorate needed to be reduced and the size of the Ginninderra electorate needed to be increased in order to bring those two electorates within the specified +/- 5% of the quota at the time of the 2012 election.

The Ginninderra-Molonglo boundary

Two alternate approaches

Given that there is a requirement to increase the size of the Ginninderra electorate and reduce the size of the Molonglo electorate, the Augmented Commission noted that this could be achieved broadly in two ways: by making an incremental change to increase the size of the existing 5-Member Ginninderra electorate; or by making a more substantial change to the location of the 7-Member electorate in order to address issues raised by making such an incremental change.

Reflecting these choices, the public consultation process undertaken to date has put two options forward for public consideration. The Redistribution Committee put forward the option of making an incremental change to the existing electorate of Ginninderra by transferring the Gungahlin suburbs of Crace and Palmerston from Molonglo to join Nicholls in Ginninderra with the suburbs of Belconnen.

In response to the public objections to this proposal to further split Gungahlin between Ginninderra and Molonglo, the Augmented Commission proposed a more substantial change aimed at keeping all of Gungahlin in one electorate. This proposal was to combine all of Belconnen and Gungahlin with the north Canberra suburbs of Lyneham, O’Connor and Turner.

This consultation process has served to generate widespread public comment on the various options open to the Augmented Commission in deciding how to redraw the boundaries for the ACT Legislative Assembly.

Some broad themes have emerged from this consultation process. However, no one option put forward by the Redistribution Committee, the Augmented Commission or by those who have suggested alternative proposals can be found that will satisfy all of the matters raised by the public submissions.

The necessity of splitting districts

A key theme emerging from the public submissions is the need to duly consider community of interests within each proposed electorate by avoiding the splitting of the ACT's defining districts of Belconnen, Central Canberra (further divided into north Canberra and south Canberra), Gungahlin, Molonglo Valley, Tuggeranong, Weston Creek and Woden.

This focus on attempting to avoid the splitting of districts, while understandable, needs to be tempered with recognition of the fact that numerical criteria aimed at providing in practical terms for "one vote, one value" must take priority. Therefore, while from time to time it may be possible to devise boundaries that do not split districts (such as the Ginninderra boundary that applied at the 1995 and 1998 elections), it needs to be recognised that it is likely that at least one district if not more will need to be split at each redistribution. It is also worth noting, in the context of various submissions that have argued in favour of delaying major changes in anticipation of future changes to the number of Members elected to the Legislative Assembly, that altering the number or size of the various electorates is not necessarily going to make it any easier to devise boundaries that do not split districts in future.

The fact that some districts will need to be split between electorates from time to time is a reflection of the geographic and demographic nature of the ACT's urban layout. The requirement to ensure the enrolment in each electorate is within +/-5% of the quota at the time of the next election dictates that it will not always be possible to devise electorates that neatly encompass whole districts. This is recognised in section 36 of the Electoral Act, which specifically refers to the boundaries of divisions (suburbs) and sections (parts of suburbs), but does not mention districts as a specific criterion.

Therefore, given that splitting districts is likely to be an ongoing feature of ACT redistributions, participants in the redistribution process need to be aware that districts divided between electorates are a normal feature of the redistribution process, and are not aberrations. To suggest, as several objections do, that splitting districts between electorates is a threat to their quality of representation in the Assembly is arguably overstating the importance of electoral boundaries in the minds of Assembly Members when making collective decisions in the Assembly.

The challenge, then, is to establish boundaries that minimise splits to districts, and where splits do occur, to combine groups of suburbs together that share common communities of interest insofar as that is possible given the numerical constraints.

The Redistribution Committee's proposal was aimed at combining a group of suburbs with common interests – Crace, Nicholls and Palmerston – with the adjoining district of Belconnen in the 5-Member electorate of Ginninderra. Similarly, the Augmented Commission's proposal attempted to address the split of the Gungahlin district by taking a group of north Canberra suburbs with strong connections to each other - Lyneham, O'Connor and Turner – and combining them with the adjoining districts of Belconnen and Gungahlin in a 7-Member electorate.

Both of these proposals received strenuous objections from residents and community groups from those areas proposed to be split. Notably, several objections to the proposal to combine Lyneham, O'Connor and Turner with Gungahlin and Belconnen pointed to the lack of connection between the established suburbs of north Canberra and the newer suburbs in Gungahlin, despite the fact that all of north Canberra and all of Gungahlin except the suburb of Nicholls have been in the same electorate since Molonglo was created for the 1995 election.

Whether to make minimal changes or more significant changes

Another common theme in the objections referred to the criterion to duly consider the boundaries of existing electorates. In most cases, this criterion was interpreted as requiring boundary changes to be minimal, so as to provide for stable electoral boundaries. This argument was used to advocate the "minimalist" option to transfer Crace and Palmerston to Ginninderra. Opponents of this proposal argued to the contrary, that stability of the boundaries should not be given greater weight than the other criteria, particularly the community of interests criterion. Opponents of the division of Gungahlin between electorates also argued that the gradual movement of Gungahlin suburbs from Molonglo to Ginninderra over several redistributions constituted significant change to the existing boundaries over time.

Notably, several submissions argued for more dramatic changes to the existing boundaries than those proposed by the Augmented Commission, such as the Woden Valley Community Council's proposal to create a 7-Member electorate consisting of Tuggeranong, Woden Valley and Weston Creek. Others argued in favour of splitting Weston Creek rather than Woden Valley or north Canberra.

All of the political parties represented in the Legislative Assembly argued in favour of the minimal change option. In its initial suggestion to the Redistribution Committee, the ALP argued in favour of a minimalist approach in order to minimise disruption and confusion. Both the ACT Greens and the Liberal Party explicitly objected to the Augmented Commission's proposal and argued in favour of the Redistribution Committee's proposal.

Another theme mentioned in some submissions was a desire to look to future redistributions and to the possibility that the number of Members to be elected to the Assembly may change in future. This issue led some to recommend sweeping changes, while others recommended making minimal changes in anticipation of the possibility of more significant changes being required in future.

It can be seen that several irreconcilable views were raised in the public submissions during this redistribution process. It is now the Augmented Commission's responsibility to make a decision that in its view best meets the criteria laid down in section 36 of the Electoral Act.

Whether to consider new options

The Augmented Commission noted that there are now no further opportunities for public objections to the boundaries that will be determined by the Augmented Commission. The boundaries determined at this stage of the redistribution process will be final. With regard to the various proposals made in submissions for alternative boundaries to those proposed by the Redistribution Committee and the Augmented Commission, the Augmented Commission noted that if it made further major changes at this stage of the process, there would be no opportunity to canvass these changes with the community, and the community would have no opportunity to comment on or object to any such changes before they became finally determined. Furthermore, while the Augmented Commission saw some merit in each of these proposals, none provided a solution that was clearly superior to options that had been canvassed through the public consultation

process. For these reasons, the Augmented Commission decided that it would not adopt significantly different boundaries from those that had been put forward for public comment.

Weighing the pros and cons of the two proposed models

The Augmented Commission noted that the two options put forward each had supporters and opponents, and each option had benefits and weaknesses.

The Redistribution Committee's proposal to transfer Crace and Palmerston from Molonglo to Ginninderra had the advantage of making the smallest change to the existing boundaries. This change would require the transfer of around 4,300 electors at the time of the 2012 election. By contrast, the Augmented Commission's proposal would involve the transfer of around 35,500 electors at the time of the 2012 election.

Various submissions argued that splitting a district between two electorates could dilute the quality of the representation of that district in the Assembly. Under the Redistribution Committee's minimalist option, in 2012:

- ◇ Gungahlin residents would constitute 12.6% of the electors of Ginninderra in (compared to 7.2% under the current boundaries);
- ◇ Gungahlin residents would constitute 19.7% of the electors of Molonglo (compared to 22.8% under the current boundaries).

Under the Augmented Commission's proposal to make Ginninderra the 7-Member electorate, in 2012:

- ◇ Gungahlin residents would constitute 28.8% of the electorate of Ginninderra;
- ◇ Lyneham, O'Connor and Turner residents would constitute 9.2% of the electors of Ginninderra.

With regard to the consideration of the concept of "community of interests" it is clear from the public submissions that splitting the district of Gungahlin under the Redistribution Committee's proposal would split a significant community of interest represented by the new and growing Gungahlin district. Similarly, the Augmented Commission's proposal would split the long-standing community of interests shared by Lyneham, O'Connor and Turner and their adjoining north Canberra suburbs. As discussed above, by necessity one of these "communities of interests" must be split (given that the Augmented Commission rejected the option of splitting the district of Weston Creek or otherwise changing the boundary between Molonglo and Brindabella in this redistribution).

Several submissions argued that Lyneham, O'Connor and Turner had stronger community of interest links with the rest of north Canberra because those suburbs had been established comparatively early in Canberra's history and had many decades during which connections had developed with nearby suburbs through travel, work, family, friends, schools, shops and sporting facilities. By contrast, Palmerston was a relatively new area and Crace was still to be substantially developed, indicating that the links between Crace and Palmerston and the remainder of Gungahlin were arguably not as strong. Conversely, supporters of combining all of Gungahlin in one electorate claimed that all Gungahlin suburbs had a much closer community of interest with each other than any of them had with the adjoining Belconnen district.

With regard to consideration of the criterion related to means of communication and travel, a case can be made for each group of suburbs that they have closer communication and travel links with adjoining suburbs in their own district than they do with other districts. However, taking each electorate as a whole, the Augmented

Commission remained concerned that the existing electorate of Molonglo, stretching from Gungahlin in the north through Central Canberra to Woden Valley and Weston Creek, contained more tenuous and extended communication and travel links than did the reduced Molonglo and extended Ginninderra electorates proposed by the Augmented Commission.

With regard to consideration of the criterion related to the physical features and area of each proposed electorate, the Augmented Commission noted that several supporters of the Redistribution Committee's proposal stated that north Canberra was bounded by distinct physical features – particularly the O'Connor Ridge – that served to define that area in a physical (or "3D") sense. However, the Augmented Commission noted that when considering the physical features and area of each electorate, the whole of an electorate had to be taken into account. It can be argued that the Redistribution Committee's proposed 7-Member electorate has more diverse physical features contained in it than does the Augmented Commission's proposed 7-Member Ginninderra electorate.

Returning to the criterion regarding the boundaries of existing electorates, many submissions pointed to the desirability of maintaining the stability of the existing boundaries and argued that this required the Augmented Commission to make the smallest changes practicable to ensure that the numerical criteria were met. The Augmented Commission accepts that the Redistribution Committee's proposal gives more consideration to the existing boundaries than does the proposal made by the Augmented Commission. However, the Augmented Commission also gave weight to the contrary argument that stability of existing boundaries should not by default outweigh the other criteria, particularly the community of interests criterion.

Taking account of future population changes and possible changes to the size of the Legislative Assembly

Several submissions suggested that various actions should be taken in anticipation of future population changes and/or possible changes to the size of the Legislative Assembly. Some of these suggestions were contradicted by others, with some using the possibility of future changes to argue for significant changes, while others argued in favour of making minimal changes.

The Augmented Commission noted that none of the criteria in section 36 specifically make reference to taking future considerations into account when drawing the boundaries to apply at the next election. However, the Augmented Commission had some sympathy with the view that the requirement to take account of the boundaries of existing electorates could be read as giving the Augmented Commission responsibility for considering the longer-term stability of boundaries at future redistributions.

The Augmented Commission was mindful of the fact that significant growth can be expected in the "green fields" developments planned for Gungahlin and Molonglo Valley, and in the urban redevelopment projects planned for Central Canberra. In particular, the Augmented Commission noted that the Redistribution Committee's proposal would group most of Canberra's growth areas in the one electorate, Molonglo. Adoption of this proposal would almost certainly make it likely that Molonglo will have to be reduced in size again at the next redistribution.

Conversely, the Augmented Commission was also aware that the Augmented Commission's proposed 7-Member electorate of Ginninderra contained the fast growing Gungahlin developments, which would have the potential of requiring that electorate to be reduced in size at the next redistribution. The logical reduction in this case would be to transfer Lyneham, O'Connor and Turner (if possible) back to Molonglo. The Augmented Commission noted the point made in several submissions that this possibility would arguably be unfair on the residents of Lyneham, O'Connor and Turner, who could find

themselves transferred from Molonglo to Ginninderra at this redistribution and then transferred back again at the next.

Because of the uncertainty generated by the fast pace of developments in some parts of Canberra, the Augmented Commission was concerned to ensure that its current redistribution did not generate long term boundary instability. While the Augmented Commission saw merit in aiming for a long-term model (should the Assembly remain in its current 5,5,7 configuration) of dividing the ACT into a northern electorate, a central electorate and a southern electorate, it was concerned that moving the location of the 7-Member electorate at this time would not provide the stability inherent in the requirement to duly consider the existing boundaries.

However, the Augmented Commission noted that there may be a requirement for more fundamental alterations to the boundaries after the 2012 election, particularly given the anticipated population growth in Gungahlin and the Molonglo Valley. This growth may make it necessary to reconsider the location of the 7-Member electorate once again with changes to the Brindabella and Ginninderra borders of Molonglo both possible. These are options that the community may wish to study and think about in the period leading up to the next redistribution.

The Augmented Commission was also mindful of the point made by several submissions that it is possible that the Assembly will be increased in size before the 2016 election. The Augmented Commission noted that this is not a relevant criterion that it can take into account. The Augmented Commission also noted that this point was made in submissions during the previous redistribution.

While the possibility of an increase in the size of the Assembly is not a factor that can be taken into account at this redistribution, the Augmented Commission noted that one of the issues taxing the current redistribution process is the option available to it of altering the location of the 7-Member electorate. While this is permissible within the terms of the Electoral Act, it has the potential to significantly disrupt the continuity of the existing electorates. The Augmented Commission noted that the ACT Electoral Commission has in other forums recommended that it would be desirable to alter the size of the Assembly so as to provide for electorates all being the same size. This Augmented Commission noted that such a development could serve to remove the added complication to the redistribution process that results from having electorates of different size, as at present.

The Augmented Commission's preferred model

While the Augmented Commission's initial proposal was to make a more substantial change and alter the location of the 7-Member electorate in order to prevent the split of the Gungahlin district, the Augmented Commission took the view that it would take into account all the comments on the two proposed models before making a final decision. Therefore the Augmented Commission did not consider that it was bound to give its proposal any added weight compared to the Redistribution Committee's more modest proposal; rather it was concerned to judge each proposal on its merits as highlighted by the various public submissions. Indeed, in making its initial proposal, the Augmented Commission took care to stress its concern with splitting Lyneham, O'Connor and Turner from their adjoining north Canberra suburbs.

The Augmented Commission considered that the extensive public consultation that has resulted from the two significantly different proposals put to the public has served to draw out a wider range of views than was expressed following the publication of the Redistribution Committee's proposal. These views have equipped the Augmented Commission to make a considered analysis of the various proposals.

The Augmented Commission noted that either model would split a district. Such splitting

is regretted, however, as discussed above, splitting districts needs to be accepted as a regular feature of the redistribution process in the ACT.

The Augmented Commission noted the argument that the splitting of Lyneham, O'Connor and Turner from the rest of north Canberra would disrupt more long-standing communities of interest than would occur through splitting Crace, Nicholls and Palmerston from the rest of Gungahlin. The Augmented Commission also notes the legitimate concerns of Gungahlin residents who have argued in favour of keeping all of Gungahlin within the one electorate. It is also noteworthy that very few of the submissions arguing in favour of keeping all of Gungahlin within the one electorate have argued in favour of including Lyneham, O'Connor and Turner in the same electorate as Gungahlin and Belconnen.

The Augmented Commission considered that its proposed alteration of location of the 7-Member electorate would better meet the requirement to consider means of communication and travel within each proposed electorate, given the variety of areas encompassed in the existing Molonglo electorate. However, the Augmented Commission was not satisfied that this consideration was sufficient to outweigh the other factors to be considered.

With regard to the duty to consider physical features and area, the Augmented Commission noted that both proposals had advantages and disadvantages in this regard. The Augmented Commission's proposal would reduce the diversity of the physical features of the existing elongated Molonglo electorate, while the Redistribution Committee's proposal would avoid splitting the clear physical connection between Lyneham, O'Connor and Turner and the rest of north Canberra.

The Augmented Commission also noted the requirement to give due consideration to the boundaries of existing electorates, as an element of its consideration of the other non-numerical criteria. The Redistribution Committee's proposal to transfer Crace and Palmerston from Molonglo to Ginninderra would require the transfer of around 4,300 electors at the time of the 2012 election. The Augmented Commission's proposal would involve the transfer of around 35,500 electors at the time of the 2012 election. These numbers clearly indicate that the Redistribution Committee's proposal gives greater consideration to retaining the integrity of the existing boundaries.

Taking all the above considerations into account, the Augmented Commission has decided to adopt the boundaries proposed by the Redistribution Committee, and to transfer Crace and Palmerston from Molonglo to Ginninderra and to transfer all of the Molonglo Valley into the Molonglo electorate.

The Brindabella-Molonglo boundary

The Augmented Commission noted that some of the objections to its proposal suggested changes to the Brindabella-Molonglo boundary. The Augmented Electoral Commission proposed in July 2011 that no change be made to this boundary given that Brindabella was projected to be 3.49% below the quota at the time of the October 2012 election. Consequently the existing electorate of Brindabella satisfies the numerical requirements of section 36(a) and (b).

Mr Jonathon Reynolds proposed transferring all Woden Valley suburbs to the electorate of Molonglo and transferring all Weston Creek suburbs south of Hindmarsh Drive to the electorate of Brindabella. While noting that this proposal would split the district of Weston Creek, Mr Reynolds argued that the Augmented Commission should adopt a longer-term approach to prevent piecemeal changes to include further Woden Valley suburbs in Brindabella at future redistributions.

Mr Ian McDermid made a similar suggestion regarding Brindabella.

The Augmented Commission noted that these suggested changes would solve the current split of Woden Valley suburbs between Brindabella and Molonglo by splitting Weston Creek between two electorates. Given the range of objections to the Augmented Commission's similar proposal to split north Canberra in order to prevent the splitting of Gungahlin, the Augmented Commission considered that similar objections would also apply to the proposal to split Weston Creek. Such a change would not be consistent with the many objections that argued that the requirement to duly consider the boundaries of existing electorates suggested that boundaries should not be changed where there was no requirement to change them.

Mr Martin Miller, on behalf of the Woden Valley Community Council, proposed making Brindabella a 7-Member electorate consisting of Tuggeranong, Woden Valley and Weston Creek, with Ginninderra retained as a 5-Member electorate consisting of Belconnen, Nicholls, Palmerston and Crace, with Molonglo becoming a 5-Member electorate including the remainder of Gungahlin with North and South Canberra.

While the Augmented Commission noted that there was some merit in this proposal, the Augmented Commission was not persuaded that this was a viable change given the many objections that argued that the requirement to duly consider the boundaries of existing electorates suggested that boundaries should not be changed where there was no requirement to change them. It is also noted that this proposal was put after the last opportunity for public consultation had passed, and there would be legitimate concern if the Augmented Commission were to adopt such a significant change at this stage in the redistribution process.

The public consultation process

A small number of public submissions asserted that public notification of the proposed changes to the electoral boundaries had been inadequate. The Augmented Commission noted that Electoral Act required proposed boundaries to be published in a newspaper, on the ACT Legislation Register website and at the office of the Electoral Commission. These minimum statutory requirements were of course fulfilled by the Augmented Commission.

In addition to these minimum statutory requirements, the calls for submissions and the two sets of proposed boundaries were widely publicised by email notices sent to the media, 50 community groups including all the community councils, political parties, Members of the Assembly, interested individuals and all ACT public servants. Extensive information was also made available on the Elections ACT website and at the Commission's office, with web links to the redistribution process included on the ACT Government's homepage. The Electoral Commissioner gave a wide range of media interviews at all stages of the process that resulted in media reports published prominently in all ACT newspapers, in ABC radio and commercial radio news reports and extended live interviews, and on television news. The Augmented Commission considered that this level of publicity gave a high profile to the redistribution, as can be seen from the record number of submissions received during the consultation process.

Conclusion

For the reasons given above, the Augmented Commission proposes to:

- ◇ Accept the Redistribution Committee's proposal to transfer the Gungahlin suburbs of Crace and Palmerston from the electorate of Molonglo to the electorate of Ginninderra;
- ◇ Accept the Redistribution Committee's proposal to include all of the district of Molonglo Valley in the electorate of Molonglo;
- ◇ Retain the existing Brindabella electorate unchanged; and
- ◇ Retain the existing names for the electorates of Brindabella, Ginninderra and Molonglo.

Next stage of the redistribution process

The Augmented Commission will formally complete the redistribution process by publication of a notifiable instrument of determination under section 35 of the Electoral Act and publication of a report concerning the redistribution under section 53 of the Electoral Act.

Augmented ACT Electoral Commission

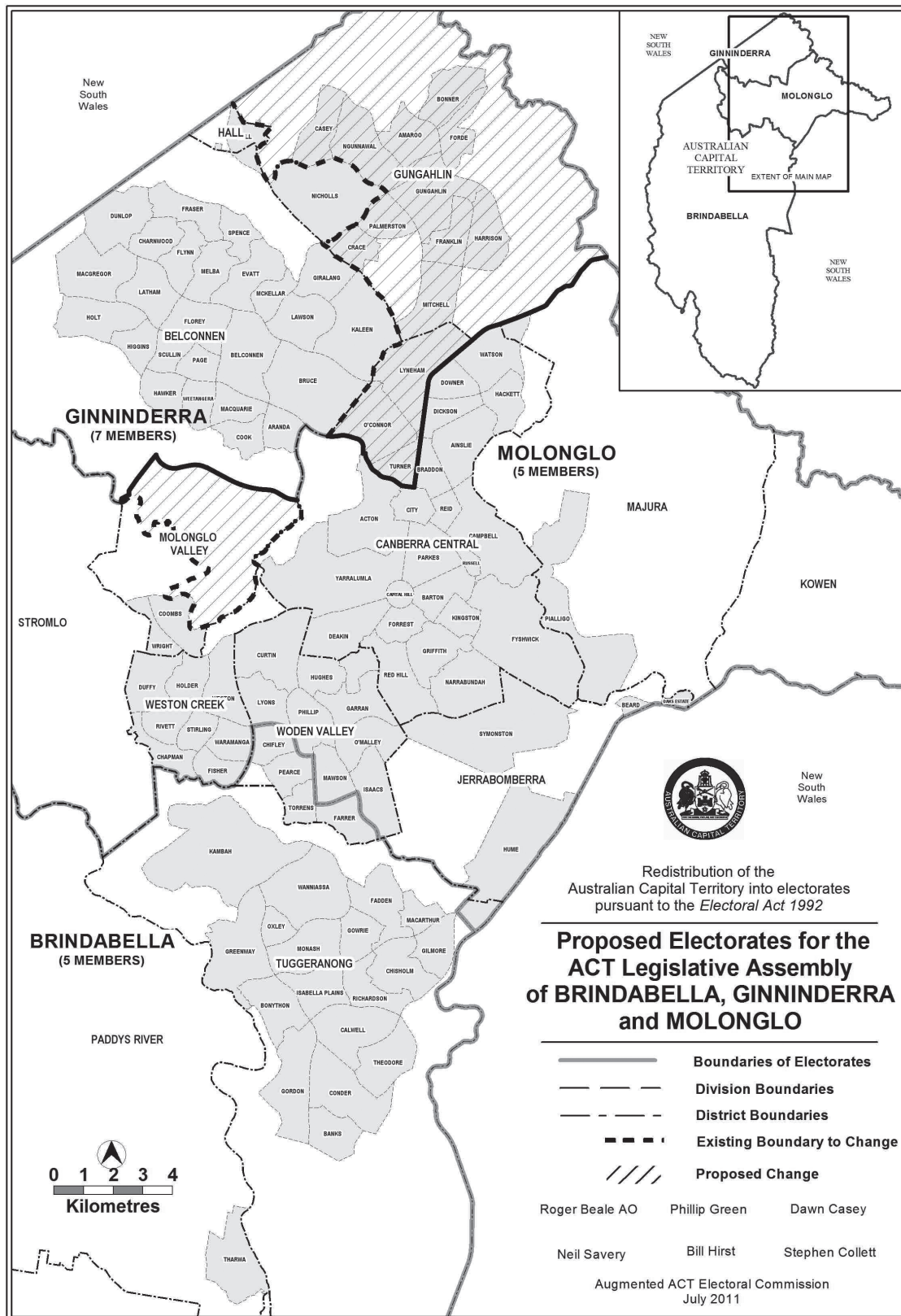
Roger Beale AO — Phillip Green — Dawn Casey

David Papps — Bill Hirst — Stephen Collett

29 September 2011

Augmented ACT Electoral Commission's proposed redistribution





Boundaries proposed by the Augmented ACT Electoral Commission.

Statement by the Augmented ACT Electoral Commission

This statement by the Augmented ACT Electoral Commission under section 51 of the *Electoral Act 1992* sets out the substance of the Augmented Commission's findings and conclusions concerning the Redistribution Committee's proposed redistribution and sets out particulars of the Augmented Commission's proposed redistribution under section 50 of the Electoral Act.

Summary of the proposal of the Augmented ACT Electoral Commission

After considering the 23 written objections to the electoral boundaries proposed by the Redistribution Committee (including one late submission) and the further spoken submissions presented at the public hearing on 24 June 2011, the Augmented Commission decided to propose a different redistribution to that proposed by the Committee.

The Augmented Commission proposes to alter the Redistribution Committee's proposed redistribution to propose that Ginninderra be made the 7-Member electorate, consisting of Belconnen, Gungahlin and Hall and the Canberra Central suburbs of Lyneham, O'Connor and Turner. The Augmented Commission does not propose to alter the existing Brindabella electorate. Molonglo would become a 5-Member electorate and would include all of the district of Molonglo Valley.

Therefore the Augmented Commission proposes in accordance with section 50 of the *Electoral Act 1992* that the ACT be divided into three electorates as follows:

BRINDABELLA, a 5-Member electorate comprising the district of Tuggeranong (excluding the suburb of Hume), the Woden Valley suburbs of Chifley, Farrer, Pearce and Torrens and the districts of Booth, Coree, Cotter River, Paddys River, Rendezvous Creek, Tennent and Mount Clear;

GINNINDERRA, a 7-Member electorate comprising the districts of Belconnen, Gungahlin and Hall, and the Canberra Central suburbs of Lyneham, O'Connor and Turner; and

MOLONGLO, a 5-Member electorate comprising the districts of Canberra Central (excluding the suburbs of Lyneham, O'Connor and Turner), Molonglo Valley, Weston Creek, Woden Valley (excluding the suburbs of Chifley, Farrer, Pearce and Torrens), Jerrabomberra (including the entire suburb of Hume), Kowen, Majura, and Stromlo.

In the opinion of the Augmented Commission, this proposal is significantly different from the Redistribution Committee's proposal. As a result, in accordance with section 51(2) (c) of the Electoral Act, written objections against this proposal will be invited in a formal notice to be notified under the *Legislation Act 2001*.

The Augmented Commission comprises the members of the ACT Electoral Commission (Chairperson, Mr Roger Beale AO; Electoral Commissioner, Mr Phillip Green; and Commission Member, Ms Dawn Casey) and members of the Redistribution Committee (the Chief Planning Executive, ACT Planning and Land Authority (Mr Neil Savery), the Surveyor-General (Mr Bill Hirst) and a person appointed by the ACT Electoral Commission, the Regional Director, ACT Office, Australian Bureau of Statistics (Mr Stephen Collett)).

Overall statistical summary

Quotas and maximum and minimum numbers of electors

	ACT	5-Member electorates	7-Member electorate
31 March 2011			
Actual enrolment	248 147		
Quotas		72 984	102 178
Not more than 110% of the quota		80 282	112 395
Not less than 90% of the quota		65 686	91 961
October 2012			
Projected enrolment	256 168		
Quotas		75 343	105 480
Not more than 105% of the quota		82 877	116 028
Not less than 95% of the quota		67 809	94 932

Existing electorates: Statistical summary

Existing electorate	Number of members	Enrolment March 2011	% above or below quota 2011	Projected enrolment October 2012	% above or below quota 2012
Brindabella	5	71 429	-2.13%	72 717	-3.49%
Ginninderra	5	69 978	-4.12%	71 098	-5.63%
Molonglo	7	106 740	4.46%	112 353	6.52%

Proposed electorates: Statistical summary

Proposed electorate	Number of members	Enrolment March 2011	% above or below quota 2011	Projected enrolment October 2012	% above or below quota 2012
Brindabella	5	71 429	-2.13%	72 717	-3.49%
Ginninderra	7	101 569	-0.60%	106 617	1.08%
Molonglo	5	75 149	2.97%	75 343	1.98%

For a detailed breakdown of these statistics see Appendix A.

Objections to the Redistribution Committee's proposal

The Augmented Commission met on 10 June 2011 to investigate 22 objections made in accordance with section 46 of the Electoral Act to the Redistribution Committee's proposed redistribution of the ACT Legislative Assembly's electoral boundaries published on 5 May 2011. The Augmented Commission also agreed to consider an additional objection received 7 days after the close of the objection period on 2 June 2011. The objections were made by:

Objections from organisations:

- ◇ Australian Labor Party (ACT Branch)
- ◇ Gungahlin Community Council
- ◇ Proportional Representation Society of Australia
- ◇ Turner Residents Association (received on 9 June 2011)
- ◇ Woden Valley Community Council

Objections from individuals:

- ◇ Bromwich, H
- ◇ Costelloe, M
- ◇ Cox, K
- ◇ Crowley, P
- ◇ De Silva, T
- ◇ Dixon, E
- ◇ Fearn, D
- ◇ Hodgson, J
- ◇ Mair, R
- ◇ Pauza, G
- ◇ Reid, B
- ◇ Reynolds, J
- ◇ Ruecroft, T I
- ◇ Schaffarczyk, K
- ◇ Sherd, S
- ◇ Shoring, G
- ◇ Sullivan, C
- ◇ Wright, R & V

Copies of the objections can be obtained from the Elections ACT website at:

www.elections.act.gov.au or from the office of the ACT Electoral Commission.

As some matters raised in the objections were not raised in suggestions given to the Redistribution Committee, the Augmented Commission was required to hold a public hearing into the objections under section 49(2) of the Electoral Act. This public hearing was held at 10.00 am on 24 June 2011 at the Reception Room, ACT Legislative Assembly, Civic Square, London Circuit, Canberra City.

The following persons made oral submissions at the public hearing:

- ◇ Mr Alan Kerlin, on behalf of the Gungahlin Community Council, who had made a written suggestion and objection.
- ◇ Mr Harvey Bromwich, who had made a written objection.
- ◇ Mr Theodore Ian Rucroft, who had made a written objection.
- ◇ Mr Tom Anderson, on behalf of the Weston Creek Community Council, who had made a written suggestion.
- ◇ Mr Malcolm Mackerras, who spoke in relation to the objections.
- ◇ Mr Elias Hallaj, on behalf of the Australian Labor Party (ACT Branch), who had made a written suggestion and objection.
- ◇ The Augmented Commission met immediately after the public hearing to consider the matters raised at the hearing and in the objections received.

Summaries of objections

A brief summary of the 23 objections follows.

Objections against the proposal to transfer Crace and Palmerston from Molonglo to Ginninderra and objections in favour of including all Gungahlin suburbs in one electorate

Nineteen of the 23 objections argued in favour of including all Gungahlin suburbs in one electorate and/or against the proposal to transfer Crace and Palmerston from Molonglo to Ginninderra. The main points put forward are summarised here:

- ◇ Crace, Nicholls and Palmerston are integral parts of the Gungahlin community and they should be included in the same electorate as all other Gungahlin suburbs. All the Gungahlin suburbs form a community of common interests.
- ◇ Crace, Nicholls and Palmerston are physically separated from the rest of the electorate of Ginninderra by a green belt and the Barton Highway.
- ◇ Crace, Nicholls and Palmerston have no affinity with the Belconnen suburbs making up the rest of the Ginninderra electorate.
- ◇ Twelve of the objections supported combining Belconnen, Gungahlin and parts of north Canberra in a 7-Member electorate, for the purpose of ensuring that all of Gungahlin is contained in one electorate.
- ◇ Molonglo as it is currently proposed is very large and spread across many areas that do not have significant connection with each other.
- ◇ Splitting Gungahlin across two electorates splits the voting power of Gungahlin, with the alleged result that MLAs do not focus on Gungahlin issues.
- ◇ Gungahlin is a disadvantaged community. Placing all of Gungahlin in one electorate would result in Gungahlin being seen to be a major community within one electorate rather than two minor communities within two electorates.

- ◇ Theodore Ian Rucroft stated that "If it is not possible to develop a suitable option that contains all communities of common interests within the same electorate, then there is a need to develop a process that rotates the disadvantage."
- ◇ Mr Rucroft also stated that "Gungahlin has been split into two electorates for too long. In the 2012 ACT election, all Gungahlin suburbs must be contained within one electorate. This should be a non-negotiable consideration, as it is required to resolve the current issues and to provide the ACT community with a transparent and socially equitable model for electing members of the ACT Legislative Assembly."
- ◇ Robert Dale Wright & Valda June Wright argued that previous redistributions have placed too much emphasis on the criterion related to the boundaries of existing electorates and not enough emphasis on the criteria related to community of interests, means of communications and travel, and physical features and area.
- ◇ Jonathon Reynolds argued that the Redistribution Committee had placed undue emphasis on the criterion related to boundaries of existing electorates. Mr Reynolds argued that the Redistribution Committee had a duty to meet all of the specified redistribution criteria without giving weight to some criteria over others. He stated: "Given that no criterion should have an emphasis or weighting greater than any other, the only way to correctly evaluate a preferred redistribution outcome in these circumstances is to analyze which options will accurately meet the MAJORITY of these sub-criteria and choose the redistribution outcome on that basis, irrespective of circumstances where a single criterion cannot be fully compliant or met."
- ◇ Alan Kerlin, Spokesman – Planning, Transport and Environment for the Gungahlin Community Council, stated "The effect of what the committee is proposing is that both the Woden and Gungahlin electorates would have multiple suburbs carved off into neighbouring electorates without any apparent regard to the requirements of the legislation that calls for common communities of interest. Gungahlin would have Nicholls, Crace and Palmerston in Ginninderra, and Woden already has Chifley, Pearce, Torrens and Farrer separated into Brindabella. The problem with Molonglo is that it is strung most of the length of Canberra. But instead of withdrawing from one end OR the other towards an eventually more compact electorate, the committee has over several redistributions actually made things worse rather than better".
- ◇ Mr Kerlin also stated "The legislation either intended the options [in section 36(c) of the Electoral Act] to be in priority order as listed, or of equal importance. Our key point is that the second last criterion on the list [the boundaries of existing electorates] seems to get most of the committee's consideration, disproportionately compared to the first criterion on the list [the community of interests within each proposed electorate, including economic, social and regional interests]. And by the way they are pursuing stability of the boundaries, the committee is instead ensuring precisely the opposite – ongoing need for continuous change."

Objections raising issues outside the scope of the redistribution

Some objections raised issues that are beyond the power of the Augmented Electoral Commission to consider, including:

- ◇ Changing the number of Members to be elected to the Assembly, or changing the number of Members to be elected in the various electorates, or changing the number of electorates.
- ◇ Making changes that would place one or more electorates outside the +/- 5% range at the time of next election, for example, creating an electorate based on all of Tuggeranong and Weston Creek.

Objections against the proposal to split Woden Valley suburbs between the electorates of Molonglo and Brindabella

Three objections were against the proposal to leave unchanged the boundary between the electorates of Molonglo and Brindabella, which would leave the suburbs of the district of Woden Valley split between the two electorates.

- ◇ Shirley Lithgow, Secretary, Woden Valley Community Council (WVCC), stated that the WVCC "would like to register its strong objection to the Redistribution Committee's proposed redistribution of the ACT electoral boundaries. The bifurcation of Woden, with the town split across the electorate of Molonglo and Brindabella has been a long-standing concern of the WVCC. We are very disappointed that this issue has not been resolved in the proposed redistribution. ... The current situation of representation with one part of Woden being on the periphery of the electorate of Brindabella, primarily comprising the Tuggeranong Valley, and the other part of Woden being on the periphery of the electorate of Molonglo that stretches all the way to the northern part of Gungahlin is most unsatisfactory. The WVCC has found that the bifurcation of Woden in this way has resulted in, with few exceptions, inadequate representation by our elected members of the Legislative Assembly, and the issues facing our town being 'off the radar.'" The WVCC did not propose an alternative set of boundaries.
- ◇ Mr Reynolds stated that "the Redistribution Committee has incorrectly: ... Omitted to properly assess and consider the ongoing inequities for "communities of interest" for the electors in the Woden Valley suburbs who remain split across two electorates ...". In his suggestion to the Redistribution Committee, his preferred option was to transfer all Woden Valley suburbs to the electorate of Molonglo and to transfer all Weston Creek suburbs south of Hindmarsh Drive to the electorate of Brindabella.
- ◇ Mr Kerlin, for the Gungahlin Community Council, also objected to the splitting of Woden Valley suburbs between the electorates of Molonglo and Brindabella. Mr Kerlin suggested altering Brindabella so that it included all of Tuggeranong and Weston Creek.

Objection against the proposal to transfer the whole of the new Molonglo Valley district to the electorate of Molonglo

One objection was against the proposal to transfer the whole of the new Molonglo Valley district to the electorate of Molonglo.

- ◇ Bogey Musidlak of the ACT Branch of the Proportional Representation Society of Australia argued that the proposed transfer of the whole of the new Molonglo Valley district to the electorate of Molonglo was premature. He stated: "Even though, as the Redistribution Committee has indicated, only four current electors would be affected, a sudden change along these lines ... does not solve any additional problems, as there are none further that must be tackled. By proposing the immediate placement of all these anticipated future growth areas exclusively within Molonglo, the Committee appears to be slanting the discussion necessary in around four years' time, as this change would result in the bulk of predictable population growth occurring in Molonglo, and continue to skew future elector-to-MLA ratios that are published at the start of each redistribution process. In the Society's view, the best time to deal thoroughly with these specific matters is when the salient conditions in the lead-up to the 2016 general election are clearer. At the time of the next redistribution process, there will be far better information on current and projected enrolments in all the suburbs where significant development activity is occurring or anticipated, and the outcome of any concerted attempt to change the size of the Legislative Assembly will also be known. The Society notes that there has not been any public agitation for an immediate change of the nature being proposed."

Objections supporting the Redistribution Committee's proposal to transfer Crace and Palmerston from Molonglo to Ginninderra

Two objections were received that supported the Redistribution Committee's proposal to transfer Crace and Palmerston from Molonglo to Ginninderra. The main points put forward are summarised here:

- ◇ Mr Musidlak of the ACT Branch of the Proportional Representation Society of Australia stated that the Society "warmly applauds the Redistribution Committee's recommendation that Palmerston and Crace be transferred from Molonglo to Ginninderra, as such a decision would cause the minimum possible disruption to voters while ensuring compliance with the mandatory legislative framework that is in operation."
- ◇ Elias Hallaj, Secretary, Australian Labor Party, ACT Branch, argued in favour of the proposal put forward by the Redistribution Committee and argued against the proposal put forward by the Gungahlin Community Council to combine Belconnen, Gungahlin and parts of north Canberra in a 7-Member electorate. His objection states "ACT Labor sympathises with the submissions which have argued for clearer "community of interest" identification within electorates. In particular the frustrations which have been articulately explained in the Gungahlin Community Council submission include valid concerns about the challenges and benefits of fulfilling community of interest objectives. However, simply transplanting the existing community of interest frustrations from one part of the city to another will not resolve this problem in the long-term. We suspect that had it been in the Redistribution Committee's proposal, any plans to move Lyneham and Watson into Ginninderra (an electorate that is largely identified with the Belconnen region) would cause some concern within those suburban communities, as much as it has been of concern to residents in the suburb of Nicholls in past elections."
- ◇ Anne McMahon, President of the Turner Residents Association, indicated that the Turner Residents Association supported the Redistribution Committee's proposed boundaries and stated "that the suburbs of Turner, O'Connor and Lyneham should NOT be part of a larger Ginninderra electorate as Turner, O'Connor and Lyneham have much stronger links with central Canberra than with the newer suburbs to the north and should remain within the electorate of Molonglo."

Objection to the Redistribution Committee's proposal to retain the name of the Molonglo electorate

One objection was to the Redistribution Committee's proposal to retain the name of the Molonglo electorate.

- ◇ Mr Kerlin, for the Gungahlin Community Council, stated "With regard to the electorate names, we point to the difficulty experienced herein of discerning between the district and the electorate of the same name. It will only get worse. We suggest the committee consider the name of Griffin for the central electorate, in recognition that the central band of Canberra ... contains most of the core areas designed by Walter Burley Griffin."

Discussion at the public hearing

The discussion at the public hearing focussed on the following issues:

- ◇ The alleged under-representation of Gungahlin's interests in the Legislative Assembly as a result of it being split between two electorates and its inclusion as a relatively minor component in both Molonglo and Ginninderra;
- ◇ Whether a preferable change would be the more substantial change discussed in the Redistribution Committee's report of making Ginninderra the 7-Member electorate consisting of Belconnen, Gungahlin and Hall and some Canberra Central suburbs; and
- ◇ Whether confusion would result from the use of the name 'Molonglo' for both the new district of the Molonglo Valley and the electorate.

Mr Kerlin, on behalf of the Gungahlin Community Council, argued in favour of making Ginninderra the 7-Member electorate incorporating all of Belconnen and Gungahlin, thus avoiding splitting the community of interests of the growing area of Gungahlin. He argued that the "incremental changes" to include Nicholls in Ginninderra, and the current proposal to transfer Crace and Palmerston to Ginninderra, are not "minor changes". He expressed support for the second option discussed by the Redistribution Committee in its report.

Mr Kerlin also asked whether, for future redistributions, the Electoral Commissioner could put a tool on the Elections ACT website that could be used by people making submissions to calculate the statistical composition of various alternative boundaries. The Electoral Commissioner undertook to endeavour to provide such a tool at the next redistribution.

Mr Bromwich argued in favour of placing all of Gungahlin in one electorate to strengthen the voice of its electors in the Legislative Assembly, noting that it is a rapidly growing area in need of good representation to ensure infrastructure needs of the population are met adequately.

Mr Anderson, on behalf of the Weston Creek Community Council, argued in favour of minimal change, supporting the first option proposed by the Redistribution Committee and suggesting that more substantial change be deferred until the 2016 election when the outcome of the current population growth in Gungahlin, Molonglo Valley and Woden will be known.

Mr Ruecroft argued that splitting suburbs off from a community of interest into a different electorate can have significant impact on the representation of that community in the Legislative Assembly. He noted that "minimum change" in the 2003 redistribution resulted in one suburb of Gungahlin being in a different electorate and that the further "minimum change" of the 2011 Redistribution Committee's final proposal would see this increase to 3 suburbs of Gungahlin being in a different electorate.

Mr Mackerras argued that making a Ginninderra the 7-Member electorate including all of Gungahlin and all of Belconnen is more logical in that it creates a 'northern' electorate rather than the continuation of Molonglo as the 7-Member electorate stretching from north Canberra through central Canberra and into the southern suburbs of Canberra.

Mr Hallaj, on behalf of the Australian Labor Party (ACT Branch), acknowledged the work of the Redistribution Committee and Elections ACT and noted the professionalism and accessibility of the current redistribution process. He supported the proposal put forward by the Redistribution Committee.

Investigation of the objections and discussion at the public hearing

In investigating the objections to the Redistribution Committee's proposed boundaries, the Augmented Commission was mindful that its deliberations were subject to and constrained by section 36 of the Electoral Act.

Section 36 of the Electoral Act sets out the criteria under which a redistribution is to be conducted. This section prescribes that the Augmented Commission, in making a redistribution of electorates, shall:

- (a) ensure that the number of electors in an electorate immediately after the redistribution is within the range permitted by the *Australian Capital Territory (Self-Government) Act 1988* (Cwlth), section 67D(2) [not greater than 110%, or less than 90%, of the quota];
- (b) endeavour to ensure, as far as practicable, that the number of electors in an electorate at the time of the next general election of members of the Legislative Assembly will not be greater than 105%, or less than 95%, of the expected quota for the electorate at that time ascertained in accordance with the formula set out in the *Australian Capital Territory (Self-Government) Act 1988* (Cwlth), section subsection 67D(1); and
- (c) duly consider —
 - (i) the community of interests within each proposed electorate, including economic, social and regional interests;
 - (ii) the means of communication and travel within each proposed electorate;
 - (iii) the physical features and area of each proposed electorate;
 - (iv) the boundaries of existing electorates; and
 - (v) the boundaries of divisions and sections fixed under the *Districts Act 2002*.

The Augmented Commission considers that the 10% tolerance set out in the Self-Government Act and the 5% tolerance set out in the Electoral Act aim to provide, in a practical way, for "one vote, one value" in ACT elections. That is, each person's vote should be worth the same as any other person's vote.

The Augmented Commission considers that s36(b) places on it a heavy responsibility to ensure as far as practicable that the number of voters will not fall outside these two numerical tolerances, and that as a result this obligation must be met even if it implies some difficulty in fully satisfying one or more of the subjective criteria which the Augmented Commission must duly consider under section 36(c) of the Electoral Act. Nevertheless, the Augmented Commission also considers that it must give as much weight to the section 36(c) criteria as possible, within the constraints of meeting the numerical tolerances.

Whether to leave the current boundaries unchanged

In considering the objections to the Redistribution Committee's proposal, and the reasons put forward by the Redistribution Committee for its proposal, the Augmented Commission took the view that the first matter to consider was whether the existing boundaries would meet the numerical requirements of section 36 without any changes.

In its proposal, the Redistribution Committee published the following table showing the enrolment figures for March 2011 and the revised projected enrolment figures for October 2012 on the current electoral boundaries.

Existing electorate	Number of members	Enrolment March 2011	% above or below quota 2011	Projected enrolment October 2012	% above or below quota 2012
Brindabella	5	71 429	-2.13%	72 717	-3.49%
Ginninderra	5	69 978	-4.12%	71 098	-5.63%
Molonglo	7	106 740	4.46%	112 353	6.52%

This table clearly shows that the current boundaries would, if they remained unchanged, fail to meet the requirement to be within +/- 5% of the quota at the time of the 2012 election. Consequently, the Augmented Commission agreed with the Redistribution Committee that the size of the Molonglo electorate needed to be reduced and the size of the Ginninderra electorate needed to be increased in order to bring those two electorates within the specified +/- 5% of the quota at the time of the 2012 election.

The Brindabella-Molonglo boundary

The Augmented Commission turned next to the Brindabella-Molonglo boundary.

The Augmented Commission noted that the enrolment for Brindabella was projected to be 3.49% below the quota at the time of the October 2012 election. Given the requirement in section 36(b) of the Electoral Act to ensure, as far as practicable, that the number of electors in an electorate at the time of the next general election will not be greater than 105%, or less than 95%, of the expected quota for the electorate at that time, the Augmented Commission noted that there was no numerically compelling argument to alter the Brindabella boundary.

The Augmented Commission noted that there were several suggestions and objections in favour of retaining the current Brindabella-Molonglo boundary, and that there were several objections to the split of Woden Valley suburbs between the Brindabella and Molonglo electorates. In particular the Woden Valley Community Council was opposed to the division of Woden Valley between the two electorates.

The Augmented Commission noted that the proposal from the Gungahlin Community Council to include all of the districts of Tuggeranong and Weston Creek in Brindabella would result in Brindabella being projected to be over 8% above the quota in October 2012. Therefore the Augmented Commission could not consider this to be a viable option given the requirement for each electorate to be within 5% of the quota at the time of the next election.

The Augmented Commission noted Mr Reynolds' suggestion of transferring all Woden Valley suburbs to Molonglo and transferring the Weston Creek suburbs of Chapman, Fisher, Rivett, Stirling and Waramanga (that is, those suburbs south of Hindmarsh Drive)

from Molonglo to Brindabella. This option would put Brindabella 0.57% below the quota in October 2012. The Augmented Commission also noted the submissions from the Weston Creek Community Council that recorded the Council's objection to Weston Creek being split between two electorates.

Taking the above considerations into account, the Augmented Commission noted that the only suggested viable alternative to splitting Woden Valley between two electorates in order to bring Brindabella within the required 5% of the quota at the time of the next election would be to split Weston Creek between two electorates. The Augmented Commission also noted that this issue has been a feature of the redistributions that have taken place from the initial 1993 redistribution onwards. The Augmented Commission was not satisfied that any new matters had been raised that would justify altering the current boundaries. While the Augmented Commission is aware that the splitting of Woden Valley between two electorates divides the community of interests represented by the district of Woden Valley into two electorates, the Augmented Commission noted that the requirement to ensure each electorate was within 5% of the quota at the time of next election dictated that one district adjacent to the Tuggeranong district must be split in order to meet the numerical requirements.

Given that the inclusion of Woden Valley suburbs in Brindabella has been a feature of the Brindabella electorate since its inception, and given that the boundaries of existing electorates are a factor to be given weight under section 36 of the Electoral Act, the Augmented Commission was not satisfied that a case had been made for altering the existing boundaries. Accordingly, the Augmented Commission decided to retain the Brindabella-Molonglo boundary unchanged.

The Ginninderra-Molonglo boundary

Having decided that there was no need to alter the Brindabella-Molonglo boundary, the Augmented Commission turned to the boundary between Ginninderra and Molonglo.

The Augmented Commission noted that Ginninderra is projected to be 5.63% below the quota in October 2012, and Molonglo is projected to be 6.52% above the quota in October 2012. As a result, the Augmented Commission considers that it is required to alter the boundaries to increase the size of Ginninderra and decrease the size of Molonglo in order to bring the electorates within +/-5% of the projected enrolment in October 2012.

The Augmented Commission noted that many of the objections to the Redistribution Committee's proposal to transfer Crace and Palmerston from Molonglo to Ginninderra objected to further splitting the district of Gungahlin between two electorates, noting that Gungahlin was already split as Nicholls was currently in Ginninderra. The Augmented Commission also noted that many objections referred to the diverse nature and large size of the existing electorate of Molonglo, which currently stretches from Gungahlin, through Canberra Central to Woden Valley, Weston Creek and the new district of Molonglo Valley.

Several objections argued that, in making its proposal, the Redistribution Committee had given too much weight to the criterion regarding existing electoral boundaries and too little weight to the other criteria related to community of interests, including economic, social and regional interests, means of communication and travel, and physical features and area.

The Augmented Commission was inclined to agree that the electorate of Molonglo had become increasingly diverse and elongated as a result of the extensive developments in Gungahlin. The Augmented Commission noted that, at the time Molonglo was created in 1995, the development in Gungahlin was at an early stage, and that, at that time, the entire district of Belconnen, with the village of Hall, constituted a neat 5-Member

electorate. Since that time, the growth of Gungahlin has had the effect of extending the reach of the Molonglo electorate further north, while the comparative lack of growth in the Ginninderra electorate has required that electorate to increase in size beyond the district of Belconnen.

The Augmented Commission had sympathy with the submissions that argued that, as a rapidly growing new area, the fact that Gungahlin was split between two electorates divided the clear community of interests represented by the new community of Gungahlin, at a critical point in its development.

The Augmented Commission also had sympathy with the argument that, while section 36 of the Electoral Act required the Augmented Commission to duly consider the boundaries of the existing electorates, it also required the Augmented Commission to take account of other less tangible criteria, including community of interests, including economic, social and regional interests, means of communication and travel, and physical features and area. The Augmented Commission was persuaded that the growth of the Gungahlin district had substantially altered the nature of the existing Molonglo electorate since its creation prior to the 1995 election. Since that time, the growth of Gungahlin has created a significant population centre to the north of the Molonglo electorate that has little connection to the southern reaches of Molonglo, which include the districts of Weston Creek, Woden Valley and Molonglo Valley. The Augmented Commission is inclined to accept the view that Molonglo now contains more significant variations of economic, social and regional interests, and more extensive networks of communication and travel, than it did at its inception.

By contrast, the growth in Gungahlin has been accompanied by increasing connections between Gungahlin and Belconnen. As the development of schools, commercial areas and other facilities in Gungahlin has taken time to establish, many Gungahlin residents have made use of schools, medical facilities, employment opportunities, shopping and commercial areas in the adjacent district of Belconnen. The development of the Gungahlin Drive Extension and the heavy usage of other roads linking Gungahlin and Belconnen have facilitated these connections.

For these reasons, the Augmented Commission was inclined to give considerable weight to the calls to combine Gungahlin and Belconnen together in the one electorate.

The Augmented Commission noted the arguments calling for stability of boundaries and for minimising the transfer of electors between electorates. However, the Augmented Commission also noted that the proposed transfer of Gungahlin to the same electorate as Belconnen received extensive endorsement by submissions from Gungahlin residents and the Gungahlin Community Council. Consequently, while most Gungahlin residents would be moved from one electorate to another under this proposal, it would appear that this would be greeted by support from the affected Gungahlin residents.

The Augmented Commission notes that it would not be possible to combine Gungahlin and Belconnen together in the one electorate without moving the location of the 7-Member seat to encompass these two districts. As these two districts by themselves are not large enough to create a 7-Member electorate, it is necessary to include other adjacent areas to make up the numbers to bring the electorate to within +/- 5% of the quota at the time of next election.

The Augmented Commission therefore considered which other suburbs could be combined with Belconnen and Gungahlin to constitute a 7-Member electorate.

The Redistribution Committee examined this issue in some detail in its report. After examining the various options submitted to it in public submissions, the Committee concluded that its preferred option would be to include the suburbs of Lyneham, O'Connor and Turner.

The Committee noted that the option to make Ginninderra the 7-Member electorate, comprising all of Belconnen, Gungahlin and the suburbs of Lyneham, O'Connor and Turner would result in the electorate of Ginninderra being 1.08% above the quota at the time of the next election. This result would be comfortably within the required +/-5% variation from the quota. The Committee also noted that the electorate boundaries around these three (north) Canberra Central suburbs would follow the major thoroughfares of Northbourne Avenue and Barry Drive.

This option was considered by the Committee to be the best mix of suburbs that could constitute a 7-Member electorate including Belconnen and Gungahlin.

The Committee considered that this option had merit in that it combined the whole of the districts of Belconnen and Gungahlin with a discrete set of (north) Canberra Central suburbs – Lyneham, O'Connor and Turner – that had close connections with each other and which were delineated by the major multi-lane thoroughfares of Northbourne Avenue and Barry Drive. The Committee also noted that two of these three suburbs were immediately adjacent to the Belconnen suburbs of Kaleen and Bruce, that they shared access to O'Connor Ridge Nature Park and that they had strong transport links along Belconnen Way, Ginninderra Drive and the Barton Highway. The Committee also noted these areas had a range of other connections due to their proximity, including access to schools, shops, sporting facilities and Calvary Hospital.

However, the Committee noted that this option could be seen as reducing the priority given to the boundaries of existing electorates, with its implicit value of minimising changes to electoral boundaries and providing stability of boundaries. The Committee noted that this option would involve the transfer of around 31,600 electors from Molonglo to Ginninderra on current enrolment. (By contrast, the proposal to transfer Palmerston and Crace would involve the transfer of around 4,000 electors.) This option would also have the significant consequence of moving the location of the 7-Member electorate. While this is a major change, it is one which will make it more likely that the stability of boundaries will be enhanced in the future. The alternative would likely see a progressive incremental shift of Gungahlin suburbs to Ginninderra in future redistributions entrenching the difficulty of satisfying the other criteria under s36(c).

The Committee noted that a negative impact of this option would be the separation of the community of interests that Lyneham, O'Connor and Turner share with neighbouring (north) Canberra Central suburbs. For example, it could be argued that Lyneham, Turner and O'Connor have much closer connections to the university precinct of Acton, the adjacent City area and the neighbouring suburbs of Braddon, Dickson, Downer and Watson than they do with Belconnen or Gungahlin.

The Augmented Commission also considered carefully the views of Anne McMahon, President of the Turner Residents Association, who indicated that the Turner Residents Association supported the Redistribution Committee's proposed boundaries and stated "that the suburbs of Turner, O'Connor and Lyneham should NOT be part of a larger Ginninderra electorate as Turner, O'Connor and Lyneham have much stronger links with central Canberra than with the newer suburbs to the north and should remain within the electorate of Molonglo."

The Augmented Commission nevertheless concluded, on balance, that the case for the proposed change to make Ginninderra the 7-Member electorate, comprising all of Belconnen, Gungahlin and the suburbs of Lyneham, O'Connor and Turner is a strong one, for the reasons set out above. In reaching this conclusion it agreed with the assessment made by the Redistribution Committee that, if Belconnen and Gungahlin are to be combined into a 7-Member electorate, the most appropriate suburbs to include would be Lyneham, O'Connor and Turner.

The Augmented Commission notes that, as its proposal is significantly different from the proposal made by the Redistribution Committee, there will be another round of public objections invited to its proposal. If significant community objections are made to this later proposal, the option of reverting to the earlier proposal, or indeed another proposal, remains possible under the terms of the Electoral Act. The Augmented Commission looks forward to seeking the community's views on its proposal.

Inclusion of the district of Molonglo Valley in one electorate

In its proposal, the Redistribution Committee had proposed to transfer that part of the new district of Molonglo Valley that is currently in the Ginninderra electorate into the electorate of Molonglo, in order to keep the new district entirely in the one electorate. This would involve the transfer of 4 currently enrolled electors in this area, who are all resident at the National Zoo and Aquarium, from Ginninderra to Molonglo.

The Augmented Commission received an objection to this proposed change from Mr Musidlak of the ACT Branch of the Proportional Representation Society of Australia. He argued that the proposed transfer of the whole of the new Molonglo Valley district to the electorate of Molonglo was premature, for the reasons quoted above in the summary of his objection to this change.

The Augmented Commission noted that a large proportion of the objections received regarding all of the ACT redistributions conducted to date centred around the splitting of districts between electorates. Therefore, the Augmented Commission agrees with the Redistribution Committee that it would be appropriate to take this opportunity, as the new district of Molonglo Valley is becoming established, to ensure that it is encompassed within the one electorate from its inception. Given the proposal to combine Belconnen, Gungahlin, Lyneham, O'Connor and Turner in the one electorate, the Augmented Commission considers it appropriate to include the new Molonglo Valley district entirely within the Molonglo electorate, as the growth in this new area could be expected to off-set further growth in Gungahlin, which could reduce the need to alter the boundaries in future to cater for differing rates of growth between the electorates.

As the only Molonglo Valley suburbs that will be developed at the time of the next election are currently in the electorate of Molonglo, and as those suburbs, Coombs and Wright, are adjacent to the Weston Creek suburbs of Duffy and Holder, the Augmented Commission agrees with the Committee that it would be appropriate to include all of the district of Molonglo Valley in the electorate of Molonglo.

Therefore, as part of its proposed redistribution, the Augmented Commission is proposing that the portion of the district of Molonglo Valley north of the Molonglo River be transferred from the electorate of Ginninderra to the electorate of Molonglo.

Names of electorates

The Augmented Commission received one objection to the proposed name of the Molonglo electorate. Mr Kerlin, on behalf of the Gungahlin Community Council, stated "With regard to the electorate names, we point to the difficulty experienced herein of discerning between the district and the electorate of the same name. It will only get worse. We suggest the committee consider the name of Griffin for the central electorate, in recognition that the central band of Canberra ... contains most of the core areas designed by Walter Burley Griffin."

This issue was also discussed at the public hearing. The Augmented Commission and the public participants at the hearing discussed the fact that the new district had been deliberately named "Molonglo Valley" so as to distinguish it from the electorate of Molonglo.

The Augmented Commission decided that it did not have sufficient evidence before it to justify altering the name of the Molonglo electorate at this time.

The Augmented Commission accordingly proposes that Brindabella, Ginninderra and Molonglo be retained as the respective names of the southern, north-western and central electorates of the Australian Capital Territory.

Conclusion

For the reasons given above, the Augmented Commission proposes to:

- ◇ Alter the Redistribution Committee's proposed redistribution to propose that Ginninderra be made the 7-Member electorate, consisting of Belconnen, Gungahlin and Hall and the Canberra Central suburbs of Lyneham, O'Connor and Turner;
- ◇ Alter the Redistribution Committee's proposed redistribution to propose that Molonglo become a 5-Member electorate including all of the district of Molonglo Valley;
- ◇ Retain the existing Brindabella electorate unchanged; and
- ◇ Retain the existing names for the electorates of Brindabella, Ginninderra and Molonglo.

Next stage of the redistribution process

As the Augmented Commission has decided to alter the proposal of the Redistribution Committee, the Augmented Commission considers that its proposal is significantly different from the Redistribution Committee's proposal, within the meaning of section 51(2)(c) of the Electoral Act. Consequently, there will be a further opportunity for public objections.

Accordingly, the Augmented Commission intends to prepare a written notifiable instrument for publication on the ACT's Legislation Register inviting written objections to this proposal.

Written objections to the Augmented Commission's proposed redistribution can be lodged with the ACT Electoral Commission within 28 days after the publication of the notice under the *Legislation Act 2001*.

Objections should be lodged at:

ACT Electoral Commission
Ground floor, North Building
Civic Square, London Circuit
CANBERRA CITY ACT 2601

Postal Address:

PO Box 272, CIVIC SQUARE ACT 2608

Phone:

(02) 6205 0033

Fax:

(02) 6205 0382

Email:

elections@act.gov.au

Who considers objections?

Objections to the Augmented Commission's proposal will be considered by the Augmented Commission. The Augmented Commission may hold public hearings into objections to its proposed redistribution. After consideration of any objections to this proposal, the Augmented Commission will make a final determination of the electoral boundaries for the ACT Legislative Assembly.

Augmented ACT Electoral Commission

Roger Beale AO — Phillip Green — Dawn Casey

Neil Savery — Bill Hirst — Stephen Collett

5 July 2011

Appendix A: Constitution of Proposed Electorates

Proposed 5-Member Electorate of Brindabella

Suburb	Actual persons enrolled 31 March 2011	Projected persons enrolled 20 October 2012	% change
Banks	3390	3951	16.55%
Bonython	2654	2831	6.67%
Calwell	4219	4402	4.34%
Chifley	1714	1764	2.92%
Chisholm	3848	3709	-3.61%
Conder	3498	4084	16.75%
Fadden	2477	2323	-6.22%
Farrer	2554	2489	-8.70%
Gilmore	2014	1964	-2.48%
Gordon	5447	6193	13.70%
Gowrie	2451	2371	-3.26%
Greenway	1098	1199	9.20%
Isabella Plains	2974	3008	1.14%
Kambah	11702	11101	-5.14%
Macarthur	1173	1184	0.94%
Monash	4188	4369	4.32%
Oxley	1309	1309	0.00%
Pearce	1913	1925	0.63%
Richardson	2245	2166	-3.52%
Theodore	2728	2898	6.23%
Torrens	1666	1677	0.66%
Tuggeranong - SSD Bal	26	22	-15.38%
Wanniassa	5921	5591	-5.57%
Remainder of ACT	220	187	-15.00%
Total	71429	72717	1.80%
Quota	72984	75343	
Variation from quota	-2.13%	-3.49%	

Proposed 7-Member Electorate of Ginninderra

Suburb	Actual persons enrolled 31 March 2011	Projected persons enrolled 20 October 2012	% change
Amaroo	3552	3688	3.83%
Aranda	1831	1836	0.27%
Belconnen Town Centre	2451	2843	15.99%
Belconnen - SSD Bal	26	30	15.38%
Bonner	278	523	88.13%
Bruce	3146	3659	16.31%
Casey	341	723	112.02%
Charnwood	2101	2052	-2.33%
Cook	2176	2180	0.18%
Crace	97	112	15.46%
Dunlop	4519	5218	15.47%
Evatt	4049	3865	-4.54%
Florey	3610	3656	1.27%
Flynn	2605	2458	-5.64%
Forde	761	862	13.27%
Franklin	1412	2961	109.70%
Fraser	1632	1541	-5.58%
Giralang	2567	2425	-5.53%
Gungahlin	3112	3513	12.89%
Gungahlin-Hall - SSD Bal	16	16	0.00%
Hall	236	228	-3.39%
Harrison	2506	2790	11.33%
Hawker	2202	2102	-4.54%
Higgins	2250	2137	-5.02%
Holt	3474	3602	3.68%
Kaleen	5676	5330	-6.10%
Latham	2768	2630	-4.99%
Lyneham	3319	3451	3.98%
McKellar	2138	2161	1.08%
Macgregor	3376	4088	21.09%
Macquarie	1807	1819	0.66%
Melba	2432	2448	0.66%
Mitchell	8	8	0.00%
Ngunnawal	6000	6187	3.12%
Nicholls	4986	5151	3.31%
O`Connor	3811	3942	3.44%
Page	2021	2014	-0.35%
Palmerston	3904	4212	7.89%
Scullin	1983	1859	-6.25%
Spence	1933	1836	-5.02%
Turner	2478	2535	2.30%
Weetangera	1979	1926	-2.68%
Total	101569	106617	4.97%
Quota	102178	105480	
Variation from quota	-0.60%	1.08%	

Proposed 5-Member Electorate of Molonglo

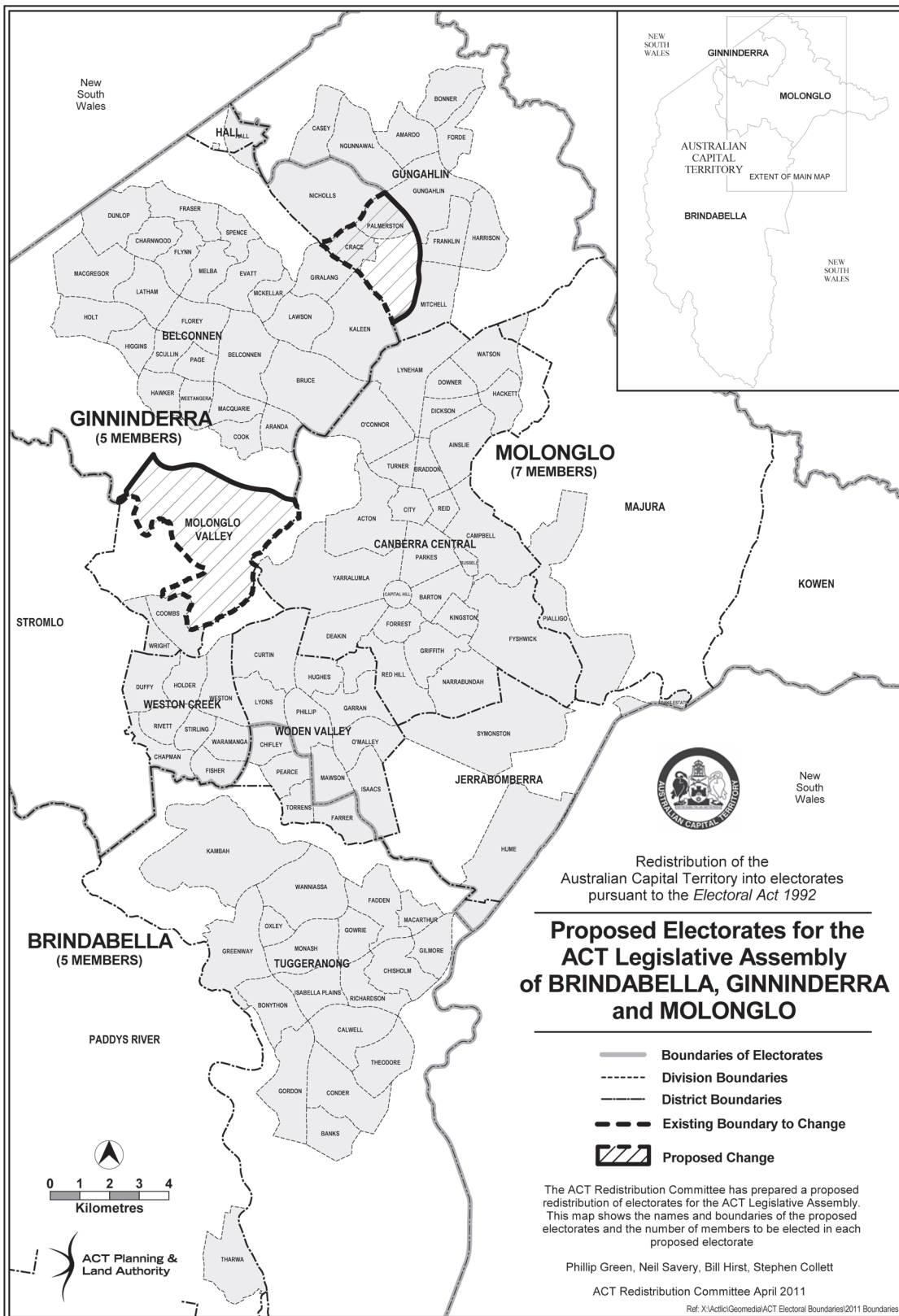
Suburb	Actual persons enrolled 31 March 2011	Projected persons enrolled 20 October 2012	% change
Acton	353	368	4.25%
Ainslie	3837	3973	3.54%
Barton	839	928	10.61%
Braddon	2735	3157	15.43%
Campbell / Duntroon / Majura	3952	3943	-0.23%
Chapman	2191	2087	-4.75%
City	918	1060	15.47%
Curtin	3908	3975	1.71%
Deakin	2108	2127	0.90%
Dickson	1431	1482	3.56%
Downer	2467	2498	1.26%
Duffy	2390	2260	-5.44%
Fisher	2342	2314	-1.20%
Forrest	1126	1156	2.66%
Fyshwick	23	21	-8.70%
Garran	2281	2342	2.67%
Griffith	3130	3306	5.62%
Hackett	2259	2299	1.77%
Harman	34	38	11.76%
Holder	2079	1978	-4.86%
Hughes	2140	2196	2.62%
Hume	6	7	16.67%
Isaacs	1871	1948	4.12%
Jerrabomberra	8	9	12.50%
Kingston	2224	2368	6.47%
Kowen	25	26	4.00%
Lyons	1825	1873	2.63%
Mawson	2174	2205	1.43%
Molonglo Valley - SSD Bal	4	4	0.00%
Narrabundah	4153	4298	3.49%
Oaks Estate	198	174	-12.12%
O`Malley	666	685	2.85%
Parkes	3	3	0.00%
Phillip	1372	1558	13.56%
Pialligo	92	95	3.26%
Red Hill	2297	2340	1.87%
Reid	1107	1139	2.89%
Rivett	2358	2383	1.06%
Russell	0	0	0.00%
Stirling	1486	1433	-3.57%
Stromlo	4	5	25.00%
Symonston	329	333	1.22%
Waramanga	1926	1825	-5.24%
Watson	3617	3733	3.21%

Augmented ACT Electoral Commission's proposed redistribution

Suburb	Actual persons enrolled 31 March 2011	Projected persons enrolled 20 October 2012	% change
Weston	2454	2416	-1.55%
Weston Creek-Stromlo - SSD Bal	28	26	-7.14%
Yarralumla	2379	2440	2.56%
Total	75149	76834	2.24%
Quota	72984	75343	
Variation from quota	2.97%	1.98%	

Redistribution Committee's proposed redistribution





Boundaries proposed by the Redistribution Committee

Redistribution Committee's proposed redistribution

Summary of proposed redistribution

The 2011 ACT Redistribution Committee proposes in accordance with section 43 of the *Electoral Act 1992* that the current electoral boundaries in the Australian Capital Territory be altered as follows:

- ◇ The suburbs of Palmerston and Crace be transferred from Molonglo to Ginninderra;
- ◇ The portion of the district of Gungahlin bounded by the suburbs of Palmerston and Crace and Barton Highway and Gungahlin Drive be transferred from Molonglo to Ginninderra; and
- ◇ The portion of the district of Molonglo Valley north of the Molonglo River be transferred from Ginninderra to Molonglo.

The proposed electorates are as follows:

BRINDABELLA, a 5-Member electorate comprising the district of Tuggeranong (excluding the suburb of Hume), the Woden Valley suburbs of Chifley, Farrer, Pearce and Torrens and the districts of Booth, Coree, Cotter River, Paddys River, Rendezvous Creek, Tennent and Mount Clear;

GINNINDERRA, a 5-Member electorate comprising the districts of Belconnen and Hall (including the entire Village of Hall) and the Gungahlin suburbs of Crace, Nicholls and Palmerston; and

MOLONGLO, a 7-Member electorate comprising the districts of Gungahlin (excluding the suburbs of Crace, Nicholls and Palmerston), Canberra Central, Molonglo Valley, Weston Creek, Woden Valley (excluding the suburbs of Chifley, Farrer, Pearce and Torrens), Jerrabomberra (including the entire suburb of Hume), Kowen, Majura, and Stromlo.

Overall statistical summary

Quotas and maximum and minimum numbers of electors

	ACT	5-Member electorates	7-Member electorate
31 March 2011			
Actual enrolment	248 147		
Quotas		72 984	102 178
Not more than 110% of the quota		80 282	112 395
Not less than 90% of the quota		65 686	91 961
October 2012			
Projected enrolment	256 168		
Quotas		75 343	105 480
Not more than 105% of the quota		82 877	116 028
Not less than 95% of the quota		67 809	94 932

Existing electorates: Statistical summary

Existing electorate	Number of members	Enrolment March 2011	% above or below quota 2011	Projected enrolment October 2012	% above or below quota 2012
Brindabella	5	71 429	-2.13%	72 717	-3.49%
Ginninderra	5	69 978	-4.12%	71 098	-5.63%
Molonglo	7	106 740	4.46%	112 353	6.52%

Proposed electorates: Statistical summary

Existing electorate	Number of members	Enrolment March 2011	% above or below quota 2011	Projected enrolment October 2012	% above or below quota 2012
Brindabella	5	71 429	-2.13%	72 717	-3.49%
Ginninderra	5	73 975	1.36%	75 418	0.10%
Molonglo	7	102 743	0.55%	108 033	2.42%

For a detailed breakdown of these statistics see Appendix A.

Legal Requirements

Commencement of the redistribution process

Section 37 of the *Electoral Act 1992* (the Electoral Act) provides that a redistribution of the electoral boundaries of the ACT shall begin as soon as practicable after the commencement of the period of 2 years ending on the expiration of the 3rd Saturday in October in the year in which the next ordinary election is due to be held.

The Redistribution Committee

Under section 39 of the Electoral Act, the ACT Electoral Commission is required to appoint a Redistribution Committee for the purposes of each redistribution. Before appointing this Redistribution Committee, the Commission gave careful consideration to the appointment of the fourth member of the Committee. The Commission appointed this Redistribution Committee on 19 January 2011. Notice of the appointment of the Redistribution Committee was notified on the ACT Legislation Register on 24 January 2011.

The Redistribution Committee consists of the Electoral Commissioner (Mr Phillip Green, who is chairperson of the Redistribution Committee), the Chief Planning Executive, ACT Planning and Land Authority (Mr Neil Savery), the Surveyor-General (Mr Bill Hirst) and a person appointed by the ACT Electoral Commission, the Regional Director, ACT Office, Australian Bureau of Statistics (Mr Stephen Collett).

Invitation to submit suggestions and comments

In accordance with section 41 of the Electoral Act, the Redistribution Committee invited written suggestions relating to the redistribution, and written comments on those suggestions, by written notice published in the Canberra Times and the ACT Legislation Register on 10 February 2011. The closing date for suggestions was 10 March 2011. Six suggestions were received by the closing date. The closing date for comments on these suggestions was 24 March 2011. No comments on suggestions were received.

Redistribution criteria

Section 36 of the Electoral Act sets out the criteria under which a redistribution is to be conducted. This section (as applied to a Redistribution Committee by section 43 of the Electoral Act) prescribes that a Redistribution Committee, in making a redistribution of electorates, shall:

- (a) ensure that the number of electors in an electorate immediately after the redistribution is within the range permitted by subsection 67D(2) of the *Australian Capital Territory (Self-Government) Act 1988* (the Self-Government Act) of the Commonwealth;
- (b) endeavour to ensure, as far as practicable, that the number of electors in an electorate at the time of the next general election of Members of the Legislative Assembly will not be greater than 105%, or less than 95%, of the expected quota for the electorate at that time ascertained in accordance with the formula set out in subsection 67D(1) of the *Australian Capital Territory (Self-Government) Act 1988* of the Commonwealth; and
- (c) duly consider —
 - (i) the community of interests within each proposed electorate, including economic, social and regional interests;
 - (ii) the means of communication and travel within each proposed electorate;
 - (iii) the physical features and area of each proposed electorate;
 - (iv) the boundaries of existing electorates; and
 - (v) the boundaries of divisions and sections fixed under the *Districts Act 2002*.

Section 67D of the *Australian Capital Territory (Self-Government) Act 1988* of the Commonwealth prescribes that:

(1) In this section:

“**quota**”, in relation to an electorate for the Territory, means the number calculated in accordance with the formula:

$$\frac{\text{Number of Territory electors} \times \text{Number of electorate members}}{\text{Number of Territory members}}$$

where:

“**Number of Territory electors**” means the number of electors of the Territory;

“**Number of electorate members**” means the number of members to be elected by the electorate;

“**Number of Territory members**” means the number of members of the Assembly.

- (2) A distribution or redistribution of the Territory into electorates is not to result in any electorate having, immediately after the distribution or redistribution:
 - (a) a number of electors of the Territory greater than 110% of its quota; or
 - (b) a number of electors of the Territory less than 90% of its quota.

Objections

Written objections to the Redistribution Committee's proposed redistribution can be lodged with the ACT Electoral Commission by no later than 2 June 2011.

Objections should be lodged at:

ACT Electoral Commission
Ground Floor, North Building, Civic Square
London Circuit
CANBERRA ACT 2601

Postal Address:

PO Box 272, CIVIC SQUARE ACT 2608

Phone:

(02) 6205 0033,

Fax:

(02) 6205 0382

Email:

elections@act.gov.au

Who considers objections?

Objections to the Redistribution Committee's proposal will be considered by the Augmented ACT Electoral Commission. The Augmented Commission consists of the Chairperson of the ACT Electoral Commission (Mr Roger Beale AO), the Electoral Commissioner (Mr Phillip Green, who is chairperson of the Redistribution Committee), the third member of the ACT Electoral Commission (Ms Dawn Casey) and the other members of the Redistribution Committee: the Chief Planning Executive (Mr Neil Savery), the ACT Surveyor-General (Mr Bill Hirst) and the Regional Director, ACT Office, Australian Bureau of Statistics (Mr Stephen Collett). The Augmented Commission may hold public hearings into objections to the proposed redistribution.

Numbers of electors

Numbers of electors immediately after the redistribution

Paragraph 36(a) of the Electoral Act requires the Committee to ensure that the number of electors in an electorate immediately after the redistribution is within the range permitted by subsection 67D(2) of the Self-Government Act. The Committee has had recourse to several sets of enrolment statistics in the course of the redistribution.

Before appointing the Redistribution Committee, the ACT Electoral Commission obtained from the Australian Electoral Commission enrolment statistics for the ACT, broken down by suburb. These enrolment statistics were compiled on 30 September 2010. These statistics were used to project the enrolment figures by suburb at the time of the next election. They were made available for the information of people lodging submissions.

The *Guidelines for submissions* published by the Committee concurrently with the call for public suggestions and comments included the enrolment statistics compiled on 30 September 2010 and the then latest available statistics from 31 January 2011.

This report includes updated enrolment statistics compiled on 31 March 2011. The Committee considered that these figures were sufficient for ensuring the criterion related to current enrolment will be met under its proposed redistribution. However, the Augmented Electoral Commission may further consult the Australian Electoral Commission before it makes its final determination, to ensure that the final determination is made against the latest enrolment statistics.

Numbers of electors at the time of the next general election

Paragraph 36(b) of the Electoral Act requires the Committee to endeavour to ensure, as far as practicable, that the number of electors in an electorate at the time of the next general election is within the range of not greater than 105% nor less than 95% of the quota at that time. The next general election is due to be held on 20 October 2012 under section 100 of the Electoral Act.

In order to comply with this criterion, the ACT Electoral Commission engaged the Australian Bureau of Statistics (ABS) to project enrolment at the suburb level as at 20 October 2012. The projected enrolment statistics were calculated by the ABS according to assumptions accepted by the Electoral Commission on the basis of advice provided by the ACT Government, using the number of electors enrolled in each suburb as at 30 September 2010. A detailed description of the methodology used to calculate the projected enrolment statistics is included in the introduction to those statistics, which are available from the Electoral Commission (see www.elections.act.gov.au).

The Committee notes that the enrolment projections for October 2012 are just that: projections based on current enrolment statistics and anticipated population changes, taking past population growth and projected housing developments into account. In particular, the Committee notes that the methodology used to calculate projected enrolment at the time of the 2012 election may not have accurately taken account of new developments in the suburbs of Coombs and Wright in the district of Molonglo Valley.

As the projected enrolment totals for October 2012 are simply estimates, they cannot be expected to be totally accurate. The Committee considers that it is necessary to leave a margin of error to allow for the possibility that enrolment projections to suburb level may not accurately forecast the actual enrolment relativities of the three electorates at the time of the next election. For this reason, the Committee has taken care that the boundaries proposed by the Committee include a margin for error to ensure that each electorate will be within the required +/-5% range at the time of the next election.

Quotas

At 31 March 2011 there were 248,147 electors on the roll for the ACT. The quota for the 5-Member electorates determined in accordance with section 67D of the Self-Government Act is 72,984, the permitted minimum enrolment (not less than 90% of the quota) is 65,686, and the permitted maximum enrolment (not greater than 110% of the quota) is 80,282. The quota for the 7-Member electorate is 102,178, the permitted minimum enrolment is 91,961, and the permitted maximum enrolment is 112,395.

The ABS projects that there will be 256,168 electors on the roll for the ACT in October 2012. Therefore the quota for the 5-Member electorates at that time determined in accordance with subsection 67D(1) of the Self-Government Act is 75,343, the permitted minimum enrolment (not less than 95% of the quota) is 67,809, and the permitted maximum enrolment (not greater than 105% of the quota) is 82,877. The quota for the 7-Member electorate is 105,480, the permitted minimum enrolment is 94,932, and the permitted maximum is 116,028.

The other redistribution criteria

The criteria set out in paragraph 36(c) of the Electoral Act — community of interests, means of communication and travel, physical features and area, boundaries of existing electorates and boundaries of divisions and sections fixed under the *Districts Act 2002* — are subservient to the two objectives of enrolments in proposed electorates being within a range of 5% above or below the quota at the time of the next election and current enrolments being within 10% above or below the quota. However, given these two constraints the Committee sought to ensure that the other criteria were given maximum possible effect. In particular, the Committee considered that these criteria were best met by avoiding, where possible, splitting suburbs and districts and by selecting boundaries which clearly separate communities.

Suggestions and comments

Six suggestions were lodged with the Redistribution Committee by the close of the suggestions period on 10 March 2011. No comments on the suggestions were received by the closing date on 24 March 2011. Copies of the suggestions may be viewed at the Commission's office or obtained from its website, www.elections.act.gov.au.

The Committee met on 31 March 2011 to discuss the public suggestions received.

Brief summary of suggestions

Elias Hallaj, Secretary, Australian Labor Party, ACT Branch

This suggestion notes that "ACT Labor believes that although there is a long-term need for more substantial reform, the stability of the current electoral structure serves to increase the public confidence in the administration and outcomes of Territory Elections." The suggestion makes a case for only moving a small number of suburbs between electorates in order to meet the requirements of the redistribution provisions. "ACT Labor therefore requests that the Redistribution Committee seek a minimalist approach to boundary changes that will provide greater confidence in the existing system, boundaries and in the management of ACT electoral regulations. This would also be prudent given the current Senate debate around the ACT Assembly's rights to determine the size of its own legislature."

The suggestion does not propose any specific changes.

Alan Kerlin, Spokesman – Planning, Transport and Environment, Gungahlin Community Council

This suggestion states that “we should say at the outset that we feel most of this process will be in vain, and the committee will default to the “least change” approach it did last time around. The problem with that approach of course is that it does not fix the problem in a lasting manner, as evident from the fact that we need more changes just three years later. The incremental approach does not account for the rapid population growth in the north. And the core problem will remain: the 7-Member Molonglo electorate will remain geographically sprawling from almost Tuggeranong, through Weston, Woden, central Canberra and circling around Belconnen through most (but not all) of Gungahlin. There will remain some MLAs representing parts of Gungahlin who know little of the Gungahlin community’s issues, and if we are frank seldom set foot in Gungahlin.”

This suggestion states that “Our preferred approach is for the ACT to have additional MLAs.” The suggestion goes on to demonstrate how the ACT could be divided into 5 electorates each returning 5 MLAs.

Noting that the current redistribution law requires the ACT to be divided into two 5-Member electorates and one 7-Member electorate, the suggestion proposes a solution aimed at avoiding the current splitting of the Districts of Gungahlin and Woden Valley. This solution consists of making Ginninderra the 7-Member electorate, comprising all of Belconnen, Gungahlin and the suburb of Watson; making Molonglo a 5-Member electorate consisting of Canberra Central (less Watson) and Woden Valley; and making Brindabella a 5-Member electorate comprising all of Tuggeranong and Weston Creek.

This suggestion also proposes another alternative: making Ginninderra the 7-Member electorate, comprising all of Belconnen, Gungahlin and the suburbs of Lyneham and Watson; making Molonglo a 5-Member electorate consisting of Canberra Central (less Lyneham and Watson), Weston Creek and those Woden Valley suburbs north of Hindmarsh drive; and making Brindabella a 5-Member electorate comprising all of Tuggeranong and those Woden Valley suburbs south of Hindmarsh drive.

Jonathon Reynolds

This suggestion puts forward three options for altering the existing boundaries to return each electorate to within +/- 5% of the quota at the time of the 2012 election.

The first model proposes minimal changes to the existing boundaries, moving the Gungahlin suburbs of Palmerston and Crace from Molonglo to Ginninderra, and moving the Woden Valley suburb of Mawson from Molonglo to Brindabella. Mr Reynolds states that this model is included for illustrative purposes only and is not put forward as a recommended solution.

The second model proposes making Ginninderra the 7-Member electorate, comprising all of Belconnen and Gungahlin and the Canberra Central suburbs of Lyneham, O’Connor and Turner; making Molonglo a 5-Member electorate consisting of Canberra Central (less Lyneham, O’Connor and Turner), Woden Valley (less Chifley, Farrer, Mawson, Pearce and Torrens) and all of Weston Creek; and making Brindabella a 5-Member electorate comprising all of Tuggeranong and the Woden Valley suburbs of Chifley, Farrer, Mawson, Pearce and Torrens.

The third model proposes making Ginninderra the 7-Member electorate, comprising all of Belconnen and Gungahlin and the Canberra Central suburbs of Lyneham, O’Connor and Turner; making Molonglo a 5-Member electorate consisting of Canberra Central (less Lyneham, O’Connor and Turner), all of Woden Valley and the Weston Creek suburbs of Duffy, Holder and Weston; and making Brindabella a 5-Member electorate comprising all of Tuggeranong and the Weston Creek suburbs of Chapman, Fisher, Rivett, Stirling and Waramanga. Mr Reynolds states that this is his preferred option.

Bogey Musidlak, Convenor, Proportional Representation Society of Australia (ACT Branch)

This suggestion submitted that there should be a minimal change only to the present boundaries in order to keep the boundaries within the required +/- 5% target in 2012. Arguments put forward in favour of making a minimal change included:

- ◇ That there was a community expectation that electoral boundaries would seldom change; and
- ◇ That stability of electoral boundaries was one of the features of the Hare-Clark electoral system listed in the official case in favour of Hare-Clark distributed during the 1992 referendum on the choice of electoral systems in the ACT.

The suggestion proposed transferring the Gungahlin suburbs of Palmerston and Crace from Molonglo to Ginninderra.

The suggestion noted that: "while moving just Palmerston would address the imbalance in enrolments, the question arises of whether Crace should be moved also even though it is expected to have very few voters in October 2012. The Proportional Representation Society of Australia (Australian Capital Territory Branch) believes that better boundaries for electors would arise if this step were taken now as Nicholls, Palmerston and Crace form a more natural standalone unit geographically than would just Nicholls and Palmerston. Future growth in Crace could then result in boundary stability being a possible option when the next redistribution is undertaken as Ginninderra would have an area in which rapid population increases were occurring and receiving attention from at least some of its MLAs."

Tony Farrell

This suggestion states "that Nicholls should be removed from Ginninderra and re-united with Gungahlin, and hence Molonglo for the time being, and that Chifley, Pearce, Torrens and Farrer be removed from Brindabella and also returned to Molonglo, and that the number of Representatives for Molonglo should be raised from 7 to 9."

Tom Anderson, Deputy Chairman, Weston Creek Community Council

This suggestion consists of an initial submission dated 24 February 2011 and a supplementary submission dated 9 March 2011. The suggestion supported keeping Weston Creek entirely within the electorate of Molonglo. Recognising that changes to boundaries will be needed to ensure that electorates were within +/- 5% of the quota at the time of the 2012 election, "WCCC suggest to keep any changes to a minimum that the suburbs of Palmerston and Crace be moved from the Electorate of Molonglo to the Electorate of Ginninderra. This will provide a very clear boundary between the two electorates and geographically seems to be the "right" boundary. This move will then provide for the three electorates to be within the 5% of the projected quota for each Electorate."

Brief summary of comments

No comments were received by the closing date of 24 March 2011.

The Committee's proposed boundaries

The following paragraphs examine some of the options the Committee considered before arriving at its proposed boundaries.

Retaining the current boundaries unchanged

Under section 36(b) of the Electoral Act, the Committee is required to endeavour to ensure, as far as practicable, that the number of electors in an electorate at the time of the next general election of Members of the Legislative Assembly will not be greater than 105%, or less than 95%, of the expected quota for the electorate at that time.

According to the enrolment projections prepared by the ABS, while Brindabella is projected to be 3.49% below the quota in October 2012, Ginninderra is projected to be 5.63% below the quota in October 2012, and Molonglo is projected to be 6.52% above the quota in October 2012.

As a result, the Committee considers that it is required to alter the boundaries in order to bring all 3 electorates within +/-5% of the projected enrolment in October 2012.

Consequently, while there is no numerical imperative to alter the Brindabella boundary, the projected enrolments indicate that it will be necessary to reduce the number of electors in Molonglo and increase the number of electors in Ginninderra. Therefore leaving the current boundaries unchanged is not an option for this redistribution.

The Brindabella-Molonglo boundary

The Committee turned first to the Brindabella-Molonglo boundary.

The Committee noted that the enrolment for Brindabella was projected to be 3.49% below the quota at the time of the October 2012 election. Given the requirement in section 36(b) of the Electoral Act to ensure, as far as practicable, that the number of electors in an electorate at the time of the next general election will not be greater than 105%, or less than 95%, of the expected quota for the electorate at that time, the Committee noted that there was no numerically compelling argument to alter the Brindabella boundary.

Of the six suggestions received by the Committee, three (those submitted by the Australian Labor Party, the Proportional Representation Society and Weston Creek Community Council) indicated that there was no need to alter the Brindabella boundary.

The submission made by the Gungahlin Community Council proposed two alternative changes to the Brindabella boundary. The first change would combine all of the districts of Tuggeranong and Weston Creek in Brindabella while the second change would combine the district of Tuggeranong with those Woden Valley suburbs south of Hindmarsh drive. The Committee notes that the first proposed change would put Brindabella over 8% above the quota in October 2012, and the second proposed change would put Brindabella close to 5% above the quota in October 2012, while splitting the suburb of Phillip along Hindmarsh Drive. Given that these two proposals would fail the test of ensuring that the boundaries of Brindabella were within 5% of the quota at the time of the next election, the Committee did not consider that these options were viable.

The submission made by Tony Farrell suggested that the suburbs of Chifley, Farrer, Pearce and Torrens be removed from Brindabella and that Molonglo should be made a 9 Member electorate. As such a change is beyond the power of the Redistribution Committee, this suggestion cannot be considered within the terms of the current Electoral Act.

Two of the three proposals put forward by Jonathon Reynolds proposed the same change to the Brindabella boundary: to transfer the suburb of Mawson from Molonglo

to Brindabella. This would put Brindabella 0.56% below the quota in October 2012. Mr Reynolds' preferred option included transferring all Woden Valley suburbs to Molonglo and transferring the Weston Creek suburbs of Chapman, Fisher, Rivett, Stirling and Waramanga from Molonglo to Brindabella. This option would put Brindabella 0.57% below the quota in October 2012.

Mr Reynolds does not advance an argument as to why he recommended transferring Mawson as opposed to leaving the Brindabella boundary unchanged. In support of his proposal to incorporate all of Woden in Molonglo and to transfer 5 Weston Creek suburbs to Brindabella, Mr Reynolds indicated the desirability of not splitting the district of Woden between electorates, and noted that future redistributions could see the incorporation of the entire Weston Creek district in Brindabella as the Molonglo Valley district development grows.

Taking the above considerations into account, the Committee turned to the views expressed by the Augmented ACT Electoral Commission during the 2007 redistribution process. At the 2007 redistribution, the Redistribution Committee proposed transferring Farrer from Molonglo to Brindabella and proposed transferring Palmerston from Molonglo to Ginninderra, in order to bring all three electorates closer to the quota at the time of the next election. Following the objection process, the Augmented Commission decided that it was only necessary to move one of these suburbs in order to satisfy the requirement that all three electorates be within +/-5% of the quota at the time of the next election.

In considering the factors required to be taken into account under section 36 of the Electoral Act, the Augmented Commission determined that the requirement to consider the boundaries of existing electorates, and the requirement to endeavour to ensure that all electorates would be within +/-5% of the quota at the time of the next election, indicated that any changes should only be made to ensure that the electorates were within the 5% target, and that otherwise stability of boundaries should be maintained where possible.

In its statement of reasons for its redistribution of boundaries conducted in 2007, the Augmented Commission addressed whether it had any basis for altering the boundaries so that each electorate was closer to the quota at the time of the election, in order to provide for a greater approximation of "one-vote, one-value". At page 12 of the Report on the 2007 redistribution, the Augmented Commission stated: "The Augmented Commission noted that the Electoral Act did not explicitly refer to one-vote, one-value. Rather, it implicitly sought to meet the desirability of achieving one-vote, one-value through the mechanism of requiring each electorate to be within 5% of the quota at the time of the next election. The Augmented Commission did not consider that this requirement extended to providing that each electorate had to be as close to the quota as possible. The Augmented Commission took the view that its principal aim was to ensure that each electorate was within the required 5% of the quota and, provided that this was met, then the provisions of section 36(c), requiring consideration of range of issues such as community of interests and boundaries of existing electorates, provide guidance for the Augmented Commission in selecting the best option."

Taking these views into account, and noting the suggestions that argued in favour of retaining stability of electoral boundaries, the present Redistribution Committee has decided to propose that the Brindabella boundary should remain unchanged for the reasons expressed above by the 2007 Augmented Commission.

The Ginninderra-Molonglo boundary

Having decided that there was no need to alter the Brindabella-Molonglo boundary, the Committee turned to the boundary between Ginninderra and Molonglo.

The Committee noted that Ginninderra is projected to be 5.63% below the quota in October 2012, and Molonglo is projected to be 6.52% above the quota in October 2012. As a result, the Committee considers that it is required to alter the boundaries to increase the size of Ginninderra and decrease the size of Molonglo in order to bring the electorates within +/-5% of the projected enrolment in October 2012.

The Committee considered the following options.

Option 1: Minimal change – Transferring Palmerston and Crace from Molonglo to Ginninderra

Of the six suggestions received by the Committee, three (those submitted by the Australian Labor Party, the Proportional Representation Society and Weston Creek Community Council) supported making only a small change to the existing boundaries in order to bring them within the required +/-5% tolerance.

The Australian Labor Party did not suggest which particular change should be made, but indicated: "Moving a small number of suburbs between electorates would minimise the possibility that the proposed redistribution would generate many objections and would also improve the likelihood of wider support for more substantial reform in the future by minimising the disruption that would be caused by a significant change now as well as one in the near future."

The Proportional Representation Society argued strongly for stability of electoral boundaries, and suggested that the most appropriate change to make would be to transfer Palmerston and Crace from Molonglo to Ginninderra. It stated that it "believes that better boundaries for electors would arise if this step were taken now as Nicholls, Palmerston and Crace form a more natural standalone unit geographically than would just Nicholls and Palmerston. Future growth in Crace could then result in boundary stability being a possible option when the next redistribution is undertaken as Ginninderra would have an area in which rapid population increases were occurring and receiving attention from at least some of its MLAs."

The Weston Creek Community Council stated that: "WCCC suggest to keep any changes to a minimum that the suburbs of Palmerston and Crace be moved from the Electorate of Molonglo to the Electorate of Ginninderra. This will provide a very clear boundary between the two electorates and geographically seems to be the "right" boundary."

In addition, Mr Reynolds submitted a "minimal change" model that he did not put forward as a recommended solution, that proposed the transfer of Palmerston and Crace from Molonglo to Ginninderra. Mr Reynolds stated: "This is the least optimal choice as it further exacerbates the current inadequacies of the current electoral boundaries further fragmenting the districts of Gungahlin and Woden Valley across two electorates and uses boundaries that at times are not immediately logical when considering the divisions and sections as defined under the *Districts Act 2002*. The means of communication and travel within each proposed electorate remain complicated and for the electorate of Molonglo there is little sense in the physical features of the electorate as it encompasses several multiple disparate Districts across the North, Central and Southern Areas of Canberra."

The Committee notes that three of the above suggestions all indicated that the most appropriate suburbs to transfer to achieve minimal change would be Palmerston and Crace. The Committee notes that, numerically, it would not be necessary to transfer Crace in order to achieve the required +/-5% targets by the time of the next election.

Crace is only projected to include 112 electors in October 2012. However, the Committee notes the geography of the region suggests strongly that Crace should be included in the transfer of Palmerston to Ginninderra, given that Crace is between Palmerston and Belconnen and is adjacent to the Belconnen suburb of Giralang. The Committee further notes that the transfer of Crace would include in Ginninderra a developing suburb that could be expected to have high growth after the 2012 election, which may assist in preserving the stability of the boundaries at the following redistribution.

While it may be possible to transfer other Gungahlin suburbs from Molonglo to Ginninderra, such as Casey and Ngunnawal, the Committee agrees with the above suggestions that Palmerston and Crace would be the most appropriate suburbs to transfer, given their physical proximity to Belconnen.

However, the Committee is aware the adoption of the proposed transfer of Palmerston and Crace from Molonglo to Ginninderra would further increase the split of the district of Gungahlin between the two electorates, noting that the Gungahlin suburb of Nicholls is currently in Ginninderra.

Three of the public suggestions argued in favour of keeping all of the Gungahlin suburbs in the one electorate. The submissions made by the Gungahlin Community Council, Mr Reynolds and Mr Farrell all sought solutions that would see Gungahlin united in one electorate.

The following option considers models for including all of Gungahlin in one electorate.

Option 2: Significant change – Making Ginninderra the 7 Member electorate, consisting of Belconnen, Gungahlin, Hall and Mitchell and the Central Canberra suburbs of Lyneham, O'Connor and Turner

The Committee noted the suggestions calling for Nicholls to be included in the same electorate as the rest of Gungahlin, and for all of Gungahlin to be included in one electorate. The Committee agreed that the inclusion of Nicholls in Ginninderra is not ideal. Accordingly, the Committee examined a number of options to determine whether an alternative could be identified that included Nicholls in the same electorate as the rest of Gungahlin that also met the criteria in paragraph 36(c) to the same or to a greater extent than the current boundaries.

The Redistribution Committee that undertook the 2007 redistribution extensively canvassed options for including all Gungahlin suburbs in the one electorate. These included combining (north) Central Canberra suburbs with Belconnen suburbs to form a 5 Member electorate and combining all of Gungahlin with a portion of Belconnen suburbs in a 5 Member electorate. The current Committee agrees with the 2007 Committee in rejecting these options for the same reasons as were canvassed in the 2007 report.

Other options considered in the 2007 redistribution involved proposals to combine all of Gungahlin and all of Belconnen together with some (north) Central Canberra suburbs in a 7 Member electorate.

In this present redistribution, the Gungahlin Community Council and Mr Reynolds put forward similar options. The Gungahlin Community Council put forward two options: making Ginninderra the 7-Member electorate, comprising all of Belconnen, Gungahlin and the suburb of Watson; and making Ginninderra the 7-Member electorate, comprising all of Belconnen, Gungahlin and the suburbs of Lyneham and Watson. Mr Reynolds suggested making Ginninderra the 7-Member electorate, comprising all of Belconnen and Gungahlin and the Canberra Central suburbs of Lyneham, O'Connor and Turner.

It is noteworthy that all of these options would require the combination of the districts of Belconnen and Gungahlin with some (north) Central Canberra suburbs in order to

constitute a 7 Member electorate that meets the +/-5% criterion. The Committee notes that Belconnen and Gungahlin combined are not large enough to constitute a 7 Member electorate without supplementation from another district. Thus any attempt to avoid splitting the district of Gungahlin must of necessity split another district. As the suburbs of (north) Central Canberra are those closest to and in some cases directly adjacent to Belconnen and Gungahlin, these are the suburbs most appropriate to being combined in such a 7 Member electorate.

The Committee notes that the option to make Ginninderra the 7-Member electorate, comprising all of Belconnen, Gungahlin and the suburb of Watson would result in the electorate of Ginninderra being 4.79% below the quota at the time of the next election. For the reasons canvassed in the 2007 redistribution report, the Committee would consider this result would be too close to the permitted 5% variation to be acceptable within the requirements of the Electoral Act.

The Committee notes that the option to make Ginninderra the 7-Member electorate, comprising all of Belconnen, Gungahlin and the suburbs of Lyneham and Watson would result in the electorate of Ginninderra being 2.22% above the quota at the time of the next election. While this option is comfortably within the +/-5% range, the Committee notes that it would involve placing a boundary along Wattle Street, the suburban street dividing the suburbs of Lyneham and O'Connor. The Committee did not consider this boundary to be optimal, given that it would disrupt the community of interests of the residents on either side of Wattle Street. The Committee also notes that Lyneham and Watson are only connected along a small part of their respective boundaries, along the major thoroughfare of Northbourne Avenue. The Committee did not consider the connection of these two suburbs to each other was as significant as the connections these suburbs had to other adjacent suburbs. For these reasons the Committee does not consider that the selection of Lyneham and Watson would be the optimal choice when considering an option that would result in a 7 Member electorate incorporating Belconnen and Gungahlin.

The Committee notes that the option to make Ginninderra the 7-Member electorate, comprising all of Belconnen, Gungahlin and the suburbs of Lyneham, O'Connor and Turner would result in the electorate of Ginninderra being 1.08% above the quota at the time of the next election. This result would be comfortably within the required +/-5% variation from the quota. The Committee also notes that the electorate boundaries around these three (north) Central Canberra suburbs would follow the major thoroughfares of Northbourne Avenue and Barry Drive.

This option was considered by the Committee to be the best mix of suburbs that could constitute a 7 Member electorate including Belconnen and Gungahlin.

The Committee considered that this option had merit in that it combined the whole of the districts of Belconnen and Gungahlin with a discrete set of (north) Central Canberra suburbs – Lyneham, O'Connor and Turner – that had close connections with each other and which were delineated from the rest of Central Canberra by the major multi-lane thoroughfares of Northbourne Avenue and Barry Drive. The Committee also noted that two of these three suburbs were immediately adjacent to the Belconnen suburbs of Kaleen and Bruce, that they shared access to O'Connor Ridge Nature Park and that they had strong transport links along Belconnen Way, Ginninderra Drive and the Barton Highway. The Committee also noted these areas had a range of other connections due to their proximity, including access to schools, shops, sporting facilities and Calvary Hospital.

The Committee also considered that Gungahlin and Belconnen had stronger links with each other than Gungahlin had with the further reaches of the existing Molonglo electorate, stretching as it does from Gungahlin through Central Canberra to Woden and Weston Creek.

If this option was adopted, the Committee also considered that this option could in the longer term see the Central Canberra suburbs return to Molonglo as Gungahlin increased in size.

However, the Committee notes that this option would significantly violate the principle of giving regard to the boundaries of existing electorates, with its implicit value of minimising changes to electoral boundaries and providing stability of boundaries. The Committee notes that this option would involve the transfer of around 31,600 electors from Molonglo to Ginninderra on current enrolment. (By contrast, the proposal to transfer Palmerston and Crace would involve the transfer of around 4,000 electors.) This option would also have the significant consequence of moving the location of the 7 Member electorate.

The Committee is also concerned that this option would significantly disrupt the community of interests that Lyneham, O'Connor and Turner share with neighbouring (north) Central Canberra suburbs. As the various Central Canberra suburbs were developed and settled much earlier than the suburbs of Belconnen and Gungahlin, it is arguable they have much more in common with each other than they do with the suburbs developed more recently. For example, it could be argued that Lyneham, Turner and O'Connor have much closer connections to the university precinct of Acton, the adjacent City area and the neighbouring suburbs of Braddon, Dickson, Downer and Watson than they do with Belconnen or Gungahlin.

For the above reasons, the Committee concludes that it could not propose this change to the existing boundaries.

However, the Committee also notes the strength of feeling of those who are concerned that the existing electorate of Molonglo is too large, stretching as it does from Gungahlin to Weston Creek, and that it splits the growing district of Gungahlin. The Committee also recognises that the preferred alternative to this option would further split Gungahlin between Molonglo and Ginninderra.

The Committee therefore invites the ACT community to comment on the above option in the objection stage of this redistribution process. Should significant community support for this (or another) change emerge during the objection process, the Augmented Commission would have the option of rejecting the proposal of this Committee and substituting its own proposed redistribution. If that were to occur, the Electoral Act would require the Augmented Commission to conduct a further round of objections should the Augmented Commission's proposal be significantly different from the proposal made by this Committee.

Inclusion of the district of Molonglo Valley in one electorate

The Committee notes that the new district of Molonglo Valley is currently split between the electorates of Ginninderra and Molonglo. By the time of the October 2012 election, the only suburbs expected to be occupied by residents will be the suburbs of Coombs and Wright, both within the current electorate of Molonglo.

A general principle has been expressed at every redistribution conducted for the ACT Legislative Assembly that ACT districts constitute discrete communities of interests; therefore districts should not be split between electorates where possible. In order to be consistent with this principle, the Committee considers that it would be appropriate at this redistribution to alter the Ginninderra-Molonglo boundary to ensure that the whole of the district of Molonglo Valley is within one electorate.

As the only Molonglo Valley suburbs that will be developed at the time of the next election are currently in the electorate of Molonglo, and as those suburbs, Coombs and Wright, are adjacent to the Weston Creek suburbs of Duffy and Holder, the Committee considers that it would be appropriate to include all of the district of Molonglo Valley in the electorate of Molonglo. The Committee notes that this change will affect 4 currently enrolled electors in this area, who are all resident at the National Zoo and Aquarium. These 4 electors will be transferred from Ginninderra to Molonglo under the Committee's proposal.

Therefore, as part of its proposed redistribution, the Committee is proposing that the portion of the district of Molonglo Valley north of the Molonglo River be transferred from the electorate of Ginninderra to the electorate of Molonglo.

Changes to the number of Members to be elected in each electorate

The submissions from the Gungahlin Community Council and from Mr Farrell suggested a change in the number of Members elected in the various electorates. The Committee notes that it does not have any power under the Electoral Act to consider this as a viable option in making its proposed redistribution. Section 34 of the Electoral Act specifies that the ACT must be divided into one electorate returning 7 Members, and two electorates returning 5 Members.

The Committee notes the ACT Electoral Commission's 30 April 2002 *Submission to the ACT Legislative Assembly Standing Committee on Legal Affairs Inquiry into the appropriateness of the size of the Legislative Assembly for the ACT and options for changing the number of members, electorates and any other related matter*, available at www.elections.act.gov.au. This submission expressed the Commission's view that the following two principles would further enhance the ACT's electoral system:

- ◇ Electorates should each return the same number of Members; and
- ◇ The total number of Members should be an odd number – accordingly there should be an odd number of electorates.

This Committee notes adoption of these principles would have the beneficial effect of removing the issue of where to place unequal sized electorates from consideration at future redistributions.

Conclusion

While the Committee is mindful of, and sympathetic with, the arguments in favour of keeping Gungahlin suburbs together in the one electorate, the Committee views the transfer of Palmerston and Crace from Molonglo to join Nicholls in Ginninderra as the minimum change necessary to ensure that each electorate is within the required statistical allowances. It would also minimise public confusion and maintain continuity of existing boundaries as far as practicable.

The Committee notes that there are strong links between Nicholls and Palmerston, as they were among the first Gungahlin suburbs developed and those suburbs and the newer suburb of Crace share transport links with and proximity to Belconnen, being the closest Gungahlin suburbs to Belconnen. The Committee also notes that placing the revised electorate boundary around Palmerston and Crace along Gungahlin Drive will present a clear and obvious boundary.

In considering the available options, the Committee is of the view that the transfer of Palmerston and Crace from Molonglo to Ginninderra is the best available change that will ensure that the requirements of the Electoral Act are met.

For the purpose of keeping the new district of Molonglo in the one electorate, the Committee also proposes that the portion of the district of Molonglo Valley north of the Molonglo River be transferred from the electorate of Ginninderra to the electorate of Molonglo.

Names of electorates

In the first distribution of electoral boundaries in 1993, the then Committee also had the duty to propose names for the electorates. In naming the electorates the Committee was sensitive to the need to avoid confusion with Commonwealth electoral divisions and took cognisance of names that had a common theme and some tangible connection with their respective electorates. The names adopted in 1993 would appear to have gained general community acceptance.

None of the submissions received canvassed changing the names of any of the electorates.

The Committee notes that the new district of Molonglo Valley will be populated by the time of the 2012 election. The name of this district has the potential to be confused with the name of the electorate of Molonglo. However, in the absence of any public submissions expressing concern that the naming of Molonglo Valley could cause confusion, the Committee does not consider that there is a need to alter the name of the electorate of Molonglo at this time. However, should public concern be expressed during the objection stage of this redistribution, the Augmented Commission may wish to address this issue when making its proposal.

The Committee accordingly proposes that Brindabella, Ginninderra and Molonglo be retained as the respective names of the southern, north-western and central electorates of the Australian Capital Territory.

Redistribution Committee for the Australian Capital Territory

Phillip Green — Neil Savery — Bill Hirst— Stephen Collett

5 May 2011

Appendix A: Constitution of Proposed Electorates

Proposed Electorate of Brindabella

Suburb	Actual persons enrolled 31 March 2011	Projected persons enrolled 20 October 2012	% change
Banks	3390	3951	16.55%
Bonython	2654	2831	6.67%
Calwell	4219	4402	4.34%
Chifley	1714	1764	2.92%
Chisholm	3848	3709	-3.61%
Conder	3498	4084	16.75%
Fadden	2477	2323	-6.22%
Farrer	2554	2489	-8.70%
Gilmore	2014	1964	-2.48%
Gordon	5447	6193	13.70%
Gowrie	2451	2371	-3.26%
Greenway	1098	1199	9.20%
Isabella Plains	2974	3008	1.14%
Kambah	11702	11101	-5.14%
Macarthur	1173	1184	0.94%
Monash	4188	4369	4.32%
Oxley	1309	1309	0.00%
Pearce	1913	1925	0.63%
Richardson	2245	2166	-3.52%
Theodore	2728	2898	6.23%
Torrens	1666	1677	0.66%
Tuggeranong - SSD Bal	26	22	-15.38%
Wanniassa	5921	5591	-5.57%
Remainder of ACT	220	187	-15.00%
Total	71429	72717	1.80%
Quota	72984	75343	
Variation from quota	-2.13%	-3.49%	

Proposed Electorate of Ginninderra

Suburb	Actual persons enrolled 31 March 2011	Projected persons enrolled 20 October 2012	% change
Aranda	1831	1836	0.27%
Belconnen Town Centre	2451	2843	15.99%
Belconnen - SSD Bal	26	30	15.38%
Bruce	3146	3659	16.31%
Charnwood	2101	2052	-2.33%
Cook	2176	2180	0.18%
Crace	97	112	15.46%
Dunlop	4519	5218	15.47%
Evatt	4049	3865	-4.54%
Florey	3610	3656	1.27%
Flynn	2605	2458	-5.64%
Fraser	1632	1541	-5.58%
Giralang	2567	2425	-5.53%
Hall	236	228	-3.39%
Hawker	2202	2102	-4.54%
Higgins	2250	2137	-5.02%
Holt	3474	3602	3.68%
Kaleen	5676	5330	-6.10%
Latham	2768	2630	-4.99%
McKellar	2138	2161	1.08%
Macgregor	3376	4088	21.09%
Macquarie	1807	1819	0.66%
Melba	2432	2448	0.66%
Nicholls	4986	5151	3.31%
Page	2021	2014	-0.35%
Palmerston	3904	4212	7.89%
Scullin	1983	1859	-6.25%
Spence	1933	1836	-5.02%
Weetangera	1979	1926	-2.68%
Total	73975	75418	1.95%
Quota	72984	75343	
Variation from quota	1.36%	0.10%	

Proposed Electorate of Molonglo

Suburb	Actual persons enrolled 31 March 2011	Projected persons enrolled 20 October 2012	% change
Acton	353	368	4.25%
Ainslie	3837	3973	3.54%
Amaroo	3552	3688	3.83%
Barton	839	928	10.61%
Bonner	278	523	88.13%
Braddon	2735	3157	15.43%
Campbell / Duntroon / Majura	3952	3943	-0.23%
Casey	341	723	112.02%
Chapman	2191	2087	-4.75%
City	918	1060	15.47%
Curtin	3908	3975	1.71%
Deakin	2108	2127	0.90%
Dickson	1431	1482	3.56%
Downer	2467	2498	1.26%
Duffy	2390	2260	-5.44%
Fisher	2342	2314	-1.20%
Forde	761	862	13.27%
Forrest	1126	1156	2.66%
Franklin	1412	2961	109.70%
Fyshwick	23	21	-8.70%
Garran	2281	2342	2.67%
Griffith	3130	3306	5.62%
Gungahlin	3112	3513	12.89%
Gungahlin-Hall - SSD Bal	16	16	0.00%
Hackett	2259	2299	1.77%
Harman	34	38	11.76%
Harrison	2506	2790	11.33%
Holder	2079	1978	-4.86%
Hughes	2140	2196	2.62%
Hume	6	7	16.67%
Isaacs	1871	1948	4.12%
Jerrabomberra	8	9	12.50%
Kingston	2224	2368	6.47%
Kowen	25	26	4.00%
Lyneham	3319	3451	3.98%
Lyons	1825	1873	2.63%
Mawson	2174	2205	1.43%
Mitchell	8	8	0.00%
Molonglo Valley – SSD Bal	4	4	0.00%
Narrabundah	4153	4298	3.49%
Ngunnawal	6000	6187	3.12%
Oaks Estate	198	174	-12.12%

Redistribution Committee's proposed redistribution

Suburb	Actual persons enrolled 31 March 2011	Projected persons enrolled 20 October 2012	% change
O`Connor	3811	3942	3.44%
O`Malley	666	685	2.85%
Parkes	3	3	0.00%
Phillip	1372	1558	13.56%
Pialligo	92	95	3.26%
Red Hill	2297	2340	1.87%
Reid	1107	1139	2.89%
Rivett	2358	2383	1.06%
Russell	0	0	0.00%
Stirling	1486	1433	-3.57%
Stromlo	4	5	25.00%
Symonston	329	333	1.22%
Turner	2478	2535	2.30%
Waramanga	1926	1825	-5.24%
Watson	3617	3733	3.21%
Weston	2454	2416	-1.55%
Weston Creek-Stromlo - SSD Bal	28	26	-7.14%
Yarralumla	2379	2440	2.56%
Total	102743	108033	5.15%
Quota	102178	105480	
Variation from quota	0.55%	2.42%	

Appendices



Appendix A: Composition of the Augmented ACT Electoral Commission and the Redistribution Committee

Members of the Augmented ACT Electoral Commission	
Roger Beale AO	Chairperson
Phillip Green	Electoral Commissioner
Dawn Casey	Member of the ACT Electoral Commission
David Papps	Acting Chief Planning Executive, ACT Planning and Land Authority (from 15 July 2011)
Neil Savery	Chief Planning Executive, ACT Planning and Land Authority (up to 14 July 2011)
Bill Hirst	ACT Surveyor-General
Stephen Collett	Regional Director, ACT Office, Australian Bureau of Statistics

Members of the Redistribution Committee	
Phillip Green	Electoral Commissioner
Neil Savery	Chief Planning Executive, ACT Planning and Land Authority
Bill Hirst	ACT Surveyor-General
Stephen Collett	Regional Director, ACT Office, Australian Bureau of Statistics

Appendix B: Redistribution timetable

Formation of Redistribution Committee	25 January 2011
Suggestions period opens	10 February 2011
Suggestions period closes	10 March 2011
Comments period opens	11 March 2011
Comments period closes	24 March 2011
Proposed redistribution published	5 May 2011
Objections period closes	2 June 2011
Public hearing	24 June 2011
Announcement of new proposed redistribution	8 July 2011
Objections period closes	5 August 2011
Public hearing	31 August 2011
Announcement of final redistribution	29 September 2011
Determination of final redistribution	30 September 2011

Appendix C: Projected electoral enrolment statistics methodology

The following statistics have been compiled for the 2011 redistribution of ACT electoral boundaries in preparation for the 2012 election for the ACT Legislative Assembly. The statistics are shown for ACT Statistical Local Areas (generally suburbs) in alphabetical order (Table 1).

The enrolment projections are derived from population projections and from electoral enrolments as at 30 September 2010.

The population projections were calculated using Australian Bureau of Statistics (ABS) projections relating to Statistical Local Areas (SLAs) defined according to the Australian Standard Geographic Classification (ASGC) – 2009 (ABS Cat. No. 1216.0). The SLA projections also incorporate information gained from forecasts of new occupied dwellings as provided by the ACT Government. This data takes into account the growth of Canberra's population due to expected developments between June 2010 to June 2013.

The enrolment information used by the ABS in calculating its projections was supplied by the Australian Electoral Commission and was current as at 30 September 2010.

The compilation of these projections was undertaken by the ABS as a consultancy project for the ACT Electoral Commission.

Methodology for the Projections

The general technique employed for the projections was the cohort-component method, widely accepted as the most accurate age/sex population projection method, if the required data is available. It involves applying fertility and mortality rates and migration rates/levels to the base population to produce a projected population, which in turn becomes the base for projecting the next year, and so on.

A three-tiered approach was taken to the process of calculating the projected enrolments.

- a. The ACT population was projected by age and sex from June 2010 to June 2013.
- b. The populations of all ACT SLAs were projected by age and sex and constrained to the total from part a.
- c. Actual enrolments as at 30 September 2010 were used to calibrate the SLA population projections, resulting in projected enrolments as at 20 October 2012.

1. Projections of the Total Population of the ACT

The base population for the ACT cohort-component projections was the revised ABS 30 June 2009 Estimated Resident Population, constrained to the 2009 ACT Projected Population using High Assumption. This base population incorporated results from the 2006 Census of Population and Housing and subsequent ABS population data.

The assumptions for fertility and mortality were from Population Projections 2010 to 2013 (ABS Cat. No. 3222.0) and the ACT High Series Projections. The mortality assumption was slightly adjusted to reflect more recent years' observed death levels. The migration assumptions, based on the ACT High Series Projections were:

Net Overseas Migration	Net Interstate	Migration
2009/2013 (per annum)	1,300	500

2. Projections of the Populations of the SLAs (Suburbs)

The base population for the SLA cohort-component projections was the preliminary 30 June 2009 SLA age/sex Estimated Resident Population. The fertility, mortality and migration assumptions were based on an assessment of SLA-specific levels and trends observed over the past five to ten years. At each yearly step in this process, the SLA projections were constrained to sum to the ACT-level projection, helping to produce more reliable SLA results.

In addition to trend analysis, the SLA net migration assumptions incorporated forecasts of new occupied dwellings as provided by the ACT Government. To these forecasts persons-to-dwelling ratios derived from the 2006 Census were applied, giving new migration capacity for SLAs. This was then combined with estimates of underlying migration for existing SLA residents.

The age/sex distribution for the migration assumptions were based on overseas and inter-regional migration rates used in the calculation of published ABS SLA age/sex population estimates, which were originally derived from 2006 Population Census migration data.

The SLA projection results were collapsed into the age group 18 years or more and these were then interpolated to give results as at 30 September 2010 and 20 October 2012.

3. Projected Enrolments in SLAs

The SLA propensities of persons to be enrolled were calculated as the ratio of enrolments as at 30 September 2010 to the projected population aged 18 years or more at the same date. These propensities were then applied to the projected population aged 18 and over as at 20 October 2012 to give the projected enrolments by SLA. Minor adjustments were made for apparent enrolment lags in some SLAs.

Disclaimer

Any population projections are subject to some degree of uncertainty because it is impossible to exactly predict future trends, particularly the future level of migration. Projection of the population of small areas is especially hazardous. However, care has been taken to produce the best possible projections from the data currently available. It is important to recognise that the projection results given in this document essentially reflect the assumptions made about future fertility, mortality and migration trends.

While the assumptions are formulated on the basis of an objective assessment of demographic trends over the past decade and their likely future dynamics, there can be no certainty that they will be realised.

While ABS takes responsibility for the methodology employed, in accordance with ABS policy regarding small area population projections the assumptions used are the final responsibility of the client, and the projections are not official ABS population statistics.

The projections may be referred to as "...projections prepared by the ABS according to assumptions reflecting prevailing trends and anticipated new dwelling occupancies agreed to by the ACT Electoral Commission...".

No liability will be accepted by the Australian Bureau of Statistics for any damages arising from decisions or actions based upon this population projection consultancy service.

Current and Projected Numbers of Persons Enrolled

Suburb	Actual persons enrolled 30 September 2010	Projected persons enrolled 20 October 2012	% change
Acton	360	368	2.22%
Ainslie	3864	3973	2.82%
Amaroo	3563	3688	3.51%
Aranda	1842	1836	-0.33%
Banks	3370	3951	17.24%
Barton	827	928	12.21%
Belconnen Town Centre	2386	2843	19.15%
Belconnen - SSD Bal	32	34	6.25%
Bonner	129	523	305.43%
Bonython	2663	2831	6.31%
Braddon	2770	3157	13.97%
Bruce	3044	3659	20.20%
Calwell	4225	4402	4.19%
Campbell / Duntroon / Majura	3923	3943	0.51%
Casey	229	723	215.72%
Chapman	2201	2087	-5.18%
Charnwood	2123	2052	-3.34%
Chifley	1720	1764	2.56%
Chisholm	3873	3709	-4.23%
City	864	1060	22.69%
Conder	3501	4084	16.65%
Cook	2181	2180	-0.05%
Crace	32	112	250.00%
Curtin	3958	3975	0.43%
Deakin	2110	2127	0.81%
Dickson	1432	1482	3.49%
Downer	2468	2498	1.22%
Duffy	2390	2260	-5.44%
Dunlop	4450	5218	17.26%
Evatt	4058	3865	-4.76%
Fadden	2489	2323	-6.67%
Farrer	2579	2489	-3.49%
Fisher	2355	2314	-1.74%
Florey	3606	3656	1.39%
Flynn	2624	2458	-6.33%
Forde	633	862	36.18%
Forrest	1142	1156	1.23%
Franklin	1189	2961	149.03%
Fraser	1637	1541	-5.86%
Fyshwick	24	21	-12.50%
Garran	2317	2342	1.08%
Gilmore	2004	1964	-2.00%

Suburb	Actual persons enrolled 30 September 2010	Projected persons enrolled 20 October 2012	% change
Giralang	2594	2425	-6.52%
Gordon	5450	6193	13.63%
Gowrie	2482	2371	-4.47%
Greenway	1088	1199	10.20%
Griffith	3172	3306	4.22%
Gungahlin	3120	3513	12.60%
Gungahlin-Hall - SSD Bal	16	16	0.00%
Hackett	2265	2299	1.50%
Hall	235	228	-2.98%
Harman	41	38	-7.32%
Harrison	2462	2790	13.32%
Hawker	2199	2102	-4.41%
Higgins	2260	2137	-5.44%
Holder	2077	1978	-4.77%
Holt	3506	3602	2.74%
Hughes	2163	2196	1.53%
Hume	7	7	0.00%
Isaacs	1903	1948	2.36%
Isabella Plains	2988	3008	0.67%
Jerrabomberra	8	9	0.00%
Kaleen	5701	5330	-6.51%
Kambah	11752	11101	-5.54%
Kingston	2179	2368	8.67%
Kowen	25	26	4.00%
Latham	2775	2630	-5.23%
Lyneham	3340	3451	3.32%
Lyons	1831	1873	2.29%
McKellar	2131	2161	1.41%
Macarthur	1161	1184	1.98%
Macgregor	3346	4088	22.18%
Macquarie	1794	1819	1.39%
Mawson	2192	2205	0.59%
Melba	2464	2448	-0.65%
Mitchell	8	8	0.00%
Monash	4205	4369	3.90%
Narrabundah	4199	4298	2.36%
Ngunnawal	6008	6187	2.98%
Nicholls	4990	5151	3.23%
Oaks Estate	192	174	-9.38%
O`Connor	3833	3942	2.84%
O`Malley	664	685	3.16%
Oxley	1311	1309	-0.15%
Page	2009	2014	0.25%

Suburb	Actual persons enrolled 30 September 2010	Projected persons enrolled 20 October 2012	% change
Palmerston	3887	4212	8.36%
Parkes	3	3	0.00%
Pearce	1917	1925	0.42%
Phillip	1333	1558	16.88%
Pialligo	95	95	0.00%
Red Hill	2316	2340	1.04%
Reid	1107	1139	2.89%
Richardson	2272	2166	-4.67%
Rivett	2370	2383	0.55%
Russell	0	0	0.00%
Scullin	1982	1859	-6.21%
Spence	1937	1836	-5.21%
Stirling	1496	1433	-4.21%
Stromlo	6	5	-16.67%
Symonston	332	333	0.30%
Theodore	2740	2898	5.77%
Torrens	1694	1677	-1.00%
Tuggeranong - SSD Bal	26	22	-15.38%
Turner	2461	2535	3.01%
Wanniassa	5950	5591	-6.03%
Waramanga	1942	1825	-6.02%
Watson	3629	3733	2.87%
Weetangera	1994	1926	-3.41%
Weston	2444	2416	-1.15%
Weston Creek-Stromlo - SSD Bal	30	26	-13.33%
Yarralumla	2402	2440	1.58%
Remainder of ACT	217	187	-13.82%

Appendix D: Suggestions

See Elections ACT's website for copies of public suggestions.

Appendix E: Objections to the Redistribution Committee's proposed redistribution

See Elections ACT's website for copies of objections to the Redistribution Committee's proposed redistribution.

Appendix F: Objections to the Augmented Electoral Commission's proposal

See Elections ACT's website for copies of objections to the Augmented Electoral Commission's proposal.

