

From: Jonathon Reynolds
Sent: Friday, 5 August 2011 10:37 PM
To: Elections
Subject: Objection to proposed electoral boundary distribution (as proposed by Augmented ACT Electoral Commission)
Attachments: Future Effects of Current Proposed Distribution-2-2.pdf; ATT00001.htm; Ideal Long Term Model.pdf; ATT00002.htm

Augmented ACT Electoral Commission
ACT Electoral Commission
Ground Floor, North Building
Civic Square, London Circuit
CANBERRA CITY 2601

Dear Sir/Madam,

I wish to lodge a objection with regard to portions of the ACT Electoral Boundary redistribution as proposed by the Augmented ACT Electoral Commission.

I generally endorse the proposal to modify the electoral boundaries such that Ginninderra becomes the Seven Member Electorate, with Molonglo and Brindabella the Five Member Electorates.

The basis of my objection is that the proposal does not go far enough to address the problem of splitting of "communities of interest" across electoral boundaries with the potential impact that will occur at future redistributions.

With the current proposal the suburbs of Lyneham, O'Connor and Turner are to be removed from Molonglo included in the Ginninderra Electorate. Whilst this is an unfortunate splitting of the North Canberra "community of interest" for the current redistribution, it can clearly be extrapolated, that with rapid development predominately in Gungahlin, these three suburbs should be returned back to the Molonglo Electorate at the next redistribution as the number of voters in Ginninderra significantly increases. I endorse this current proposal.

Unfortunately no attempt has been made to address the underlying problem as it currently exists on the Molonglo/Brindabella boundary with the suburbs of the Woden Valley District still to be split across two electorates.

In the Statement published by the Augmented ACT Electoral Commission the following excuse was given for not attempting to address this issue:

"Given that the inclusion of Woden Valley suburbs in Brindabella has been a feature of the Brindabella electorate since its inception, and given that the boundaries of existing electorates are a factor to be given weight under section 36 of the Electoral Act, the Augmented Commission was not satisfied that a case had been made for altering the existing boundaries. Accordingly, the Augmented Commission decided to retain the Brindabella-Molonglo boundary unchanged."

Given this approach it could be argued that the Augmented ACT Electoral Commission intends to permanently entrench the practice where the suburbs of the Woden Valley will be redistributed piecemeal to the Brindabella Electorate as needs to "balance the numbers" dictate.

The diagram "Future effects of the currently proposed Electoral Boundary Model" attempts to illustrate this how this effect may play out.

I argue that the Augmented ACT Electoral Commission should be adopting a longer-term approach to addressing the problem along the Molonglo/Brindabella boundary.

The diagram "Suggested Ideal Target Electoral Boundary Distribution Model" attempts to illustrate a possible "perfect" electoral boundary scenario. Obviously, achieving perfection is a virtual impossibility, as the actual boundaries will need to be compliant with the relevant legislation at the time.

The Augmented ACT Electoral Commission has already noted that my previous proposal of transferring all Woden Valley suburbs to Molonglo and transferring the Weston Creek suburbs of Chapman, Fisher, Rivett, Stirling and Waramanga (that is, those suburbs south of Hindmarsh Drive) from Molonglo to Brindabella would ensure that the Brindabella Electorate is compliant with the relevant legislation for quota in October 2012.

My argument for this change based on my previous proposal as outlined above is now in part supported by demographic figures “ACT Suburbs and Districts Population Projections: 2009 to 2021” published on the ACT Government Chief Minister and Cabinet Web Page:
<http://www.cmd.act.gov.au/policystrategic/actstats/projections/suburbs>

A casual examination of these figures show that there will be a significant increase in population for the Molonglo District (immediately to the north of Weston Creek) Whereas the population of Woden remains stable, and the populations of Weston Creek and Tuggeranong Districts show slight declines over time. With this proposed model as the Molonglo Electorate (including all suburbs of the Woden Valley and Molonglo Districts) expands, more suburbs from Weston Creek will be transferred to Brindabella, ultimately with all suburbs of the Weston Creek District in the Brindabella Electorate. Obviously the Augmented ACT Electoral Commission will have access to resources to analyze these figures at a much finer detail in association with relevant Land Release and development data.

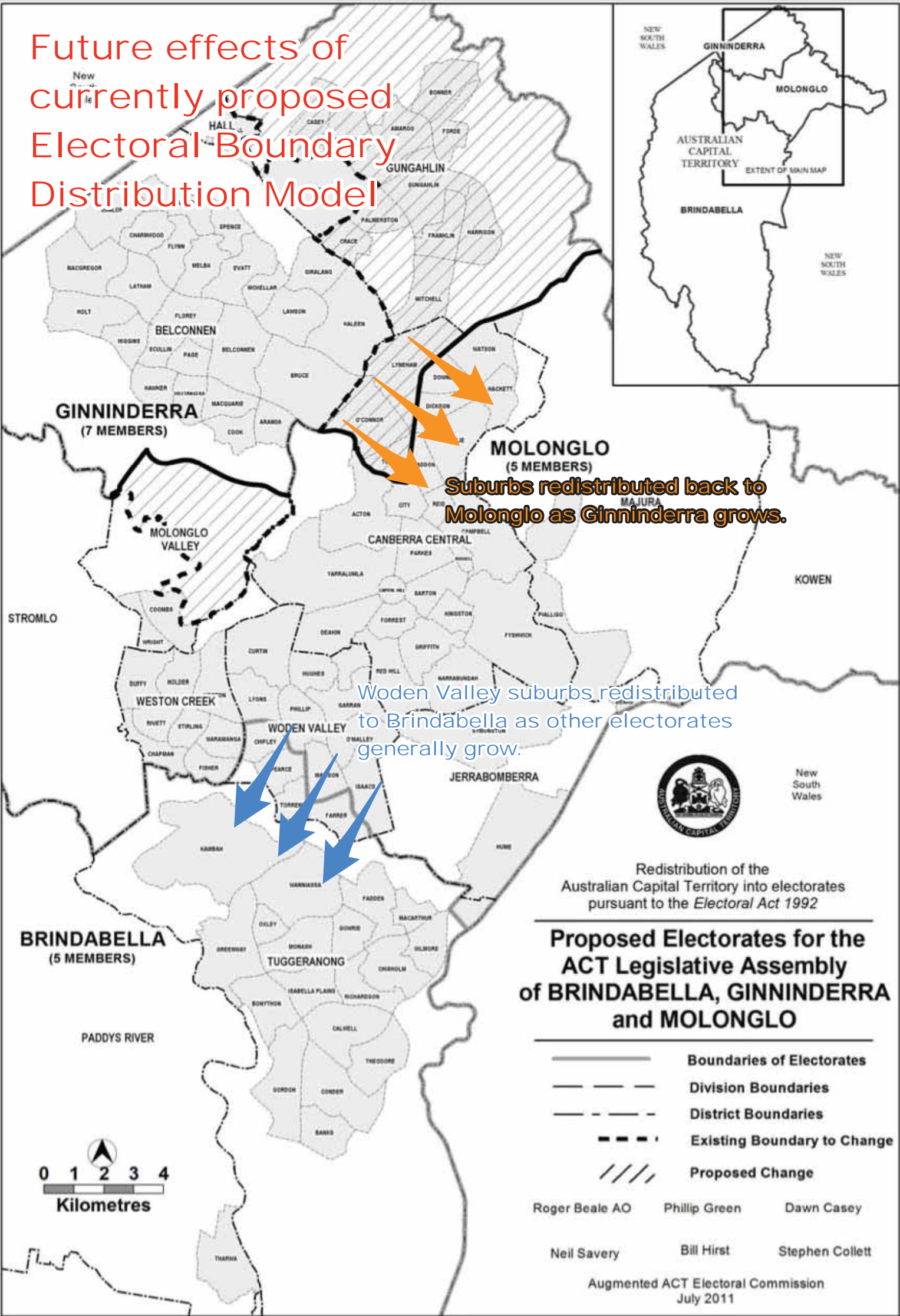
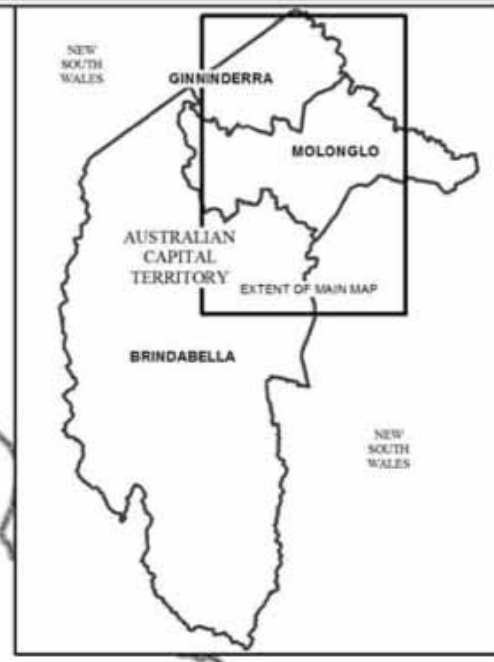
I trust that this information meets with the approval of the Augmented ACT Electoral Commission and I look forward to favorable outcomes based on my submissions from your continued deliberation on this matter.

Yours faithfully

—

Jonathon Reynolds

Future effects of currently proposed Electoral Boundary Distribution Model



Suburbs redistributed back to Molonglo as Ginninderra grows.

Woden Valley suburbs redistributed to Brindabella as other electorates generally grow.

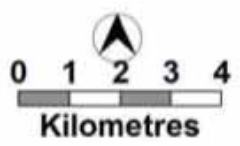


Redistribution of the Australian Capital Territory into electorates pursuant to the Electoral Act 1992

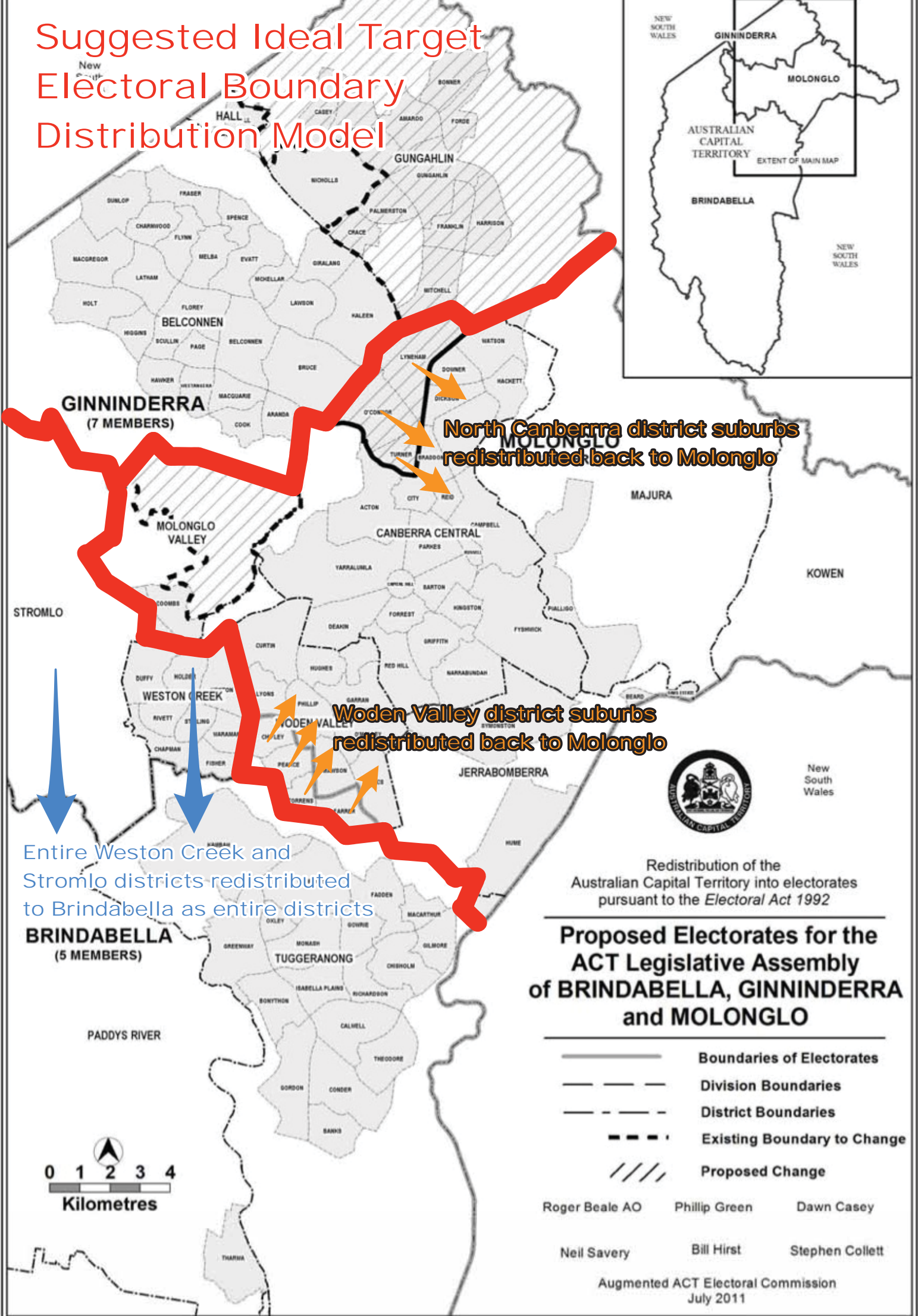
Proposed Electoralates for the ACT Legislative Assembly of BRINDABELLA, GINNINDERRA and MOLONGLO

- Boundaries of Electorates
- - - Division Boundaries
- - - District Boundaries
- - - Existing Boundary to Change
- /// Proposed Change

- Roger Beale AO
- Phillip Green
- Dawn Casey
- Neil Savery
- Bill Hirst
- Stephen Collett



Suggested Ideal Target Electoral Boundary Distribution Model



North Canberra district suburbs redistributed back to Molonglo

Woden Valley district suburbs redistributed back to Molonglo

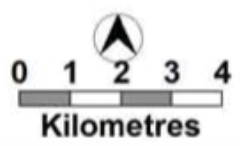
Entire Weston Creek and Stromlo districts redistributed to Brindabella as entire districts

Redistribution of the Australian Capital Territory into electorates pursuant to the Electoral Act 1992

Proposed Electorates for the ACT Legislative Assembly of BRINDABELLA, GINNINDERRA and MOLONGLO

- Boundaries of Electorates
- - - Division Boundaries
- - - District Boundaries
- - - Existing Boundary to Change
- /// Proposed Change

Roger Beale AO Phillip Green Dawn Casey
 Neil Savery Bill Hirst Stephen Collett



New South Wales