

Dear Sir/Madam,

Please find attached three suggested models for the redistribution of the current ACT Electoral Boundaries.

These proposed boundaries suggestions have been presented in both spreadsheet and graphical formats (as attached).

Model 1: Minimal Change

This model proposes the minimal changes that would be required to meet the criteria for a possible redistribution. This is the least optimal choice as it further exacerbates the current inadequacies of the current electoral boundaries further fragmenting the districts of Gungahlin and Woden Valley across two electorates and uses boundaries that at times are not immediately logical when considering the divisions and sections as defined under the Districts Act 2002. The means of communication and travel within each proposed electorate remain complicated and for the electorate of Molonglo there is little sense in the physical features of the electorate as it encompasses several multiple disparate Districts across the North, Central and Southern Areas of Canberra. This model is included for illustrative purposes only and not put forward as a recommended solution to any proposed boundary redistribution.

Model 1 Compliance with Legislative Requirements:

- **Complies:** ensure that the number of electors in an electorate immediately after the redistribution is within the range of not greater than 110%, or less than 90% of the quota;
- **Complies:** endeavour to ensure, as far as practicable, that the number of electors in an electorate at the time of the next general election of members of the Legislative Assembly will not be greater than 105%, or less than 95%, of the expected quota for the electorate at that time;

Model 2: Northern, Central and Southern Electorates (Molonglo Adjustments)

This model proposed making Molonglo a 5 member electorate and Ginninderra a 7 member electorate. Redistribution is limited to reallocating sections as defined under the Districts Act 2002 of the March 2010 Molonglo electorate only. It attempts to create a notion of clearly defined Northern (Ginninderra), Central (Molonglo) and Southern (Brindabella) electorates. Portions of North Canberra are incorporated into the Northern Electorate with the intent that they will return to the central electorate as the District of Gungahlin continues to grow significantly. These areas of North Canberra is clearly delineated by major axis roads. It makes no attempt to rectify the problems of splitting the district of the Woden Valley across two electorates at this time. Longer term redistribution problems will arise as the new district of Molonglo develops and population increases thus further potentially splitting the community in the Woden Valley in future redistributions.

Model 2 Compliance with Legislative Requirements:

- **Complies:** ensure that the number of electors in an electorate immediately after the redistribution is within the range of not greater than 110%, or less than 90% of the quota;
- **Complies:** endeavour to ensure, as far as practicable, that the number of electors in an electorate at the time of the next general election of members of the Legislative Assembly will not be greater than 105%, or less than 95%, of the expected quota for the electorate at that time;

Model 3: Northern, Central and Southern Electorates (Molonglo & Brindabella Adjustments)

This model proposed making Molonglo a 5 member electorate and Ginninderra a 7 member electorate. Redistribution involves reallocating sections as defined under the Districts Act 2002 of the March 2010 Molonglo and Brindabella electorates. It attempts to create a notion of clearly defined Northern (Ginninderra), Central (Molonglo) and Southern (Brindabella) electorates with a clear view for further growth within and of these electorates. Portions of North Canberra are incorporated into the Northern Electorate with the intent that they will return to the central electorate as the District of Gungahlin continues to grow significantly. These sections of North Canberra that are incorporated in the proposed new Ginninderra electorate are clearly bounded by major axis roads. Portions of the Woden Valley currently in Brindabella are returned to the Molonglo (central) electorate thus ensuring that the community of interest is returned to a fully intact state within a single electorate. The southern portion of Weston Creek is split along a major axis road. Whilst this change currently splits the Weston Creek district it is envisioned that as the new Molonglo district grows the entire area of Weston Creek to the north of the proposed split would be further redistributed into the Brindabella electorate thus maintaining the concept of clearly defined Central and Southern electorates and communities of interest. This is my preferred redistribution model of the three being proposed.

Model 2 Compliance with Legislative Requirements:

- **Complies;** ensure that the number of electors in an electorate immediately after the redistribution is within the range of not greater than 110%, or less than 90% of the quota;
- **Complies:** endeavour to ensure, as far as practicable, that the number of electors in an electorate at the time of the next general election of members of the Legislative Assembly will not be greater than 105%, or less than 95%, of the expected quota for the electorate at that time;

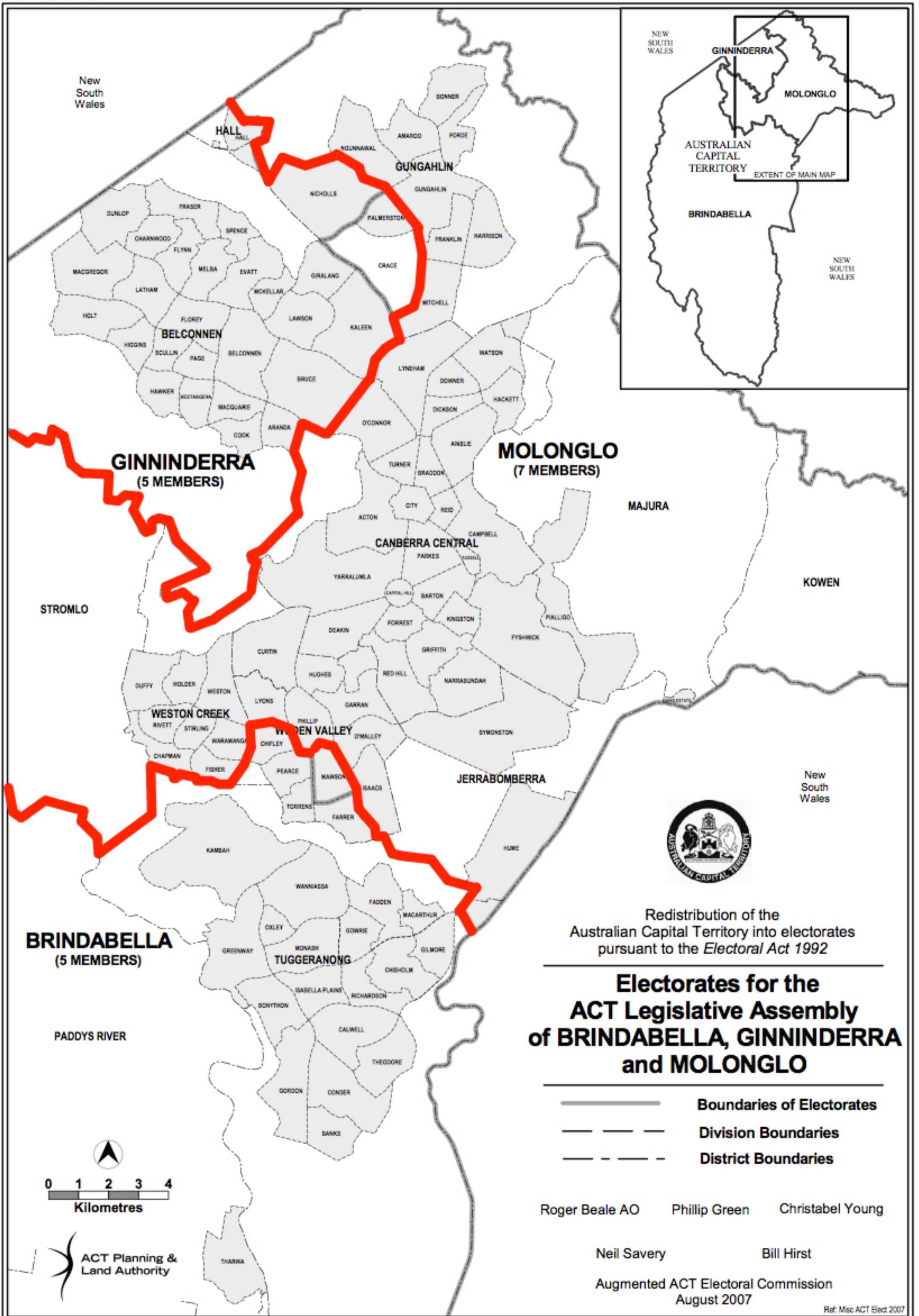
I trust that this submission meets with your approval.

I look forward to your positive consideration of these suggestions.

Yours faithfully
Jonathon Reynolds

10 March 2011

Model 1

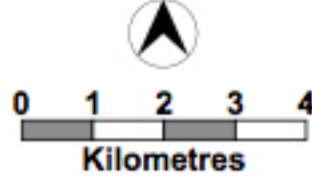


Redistribution of the Australian Capital Territory into electorates pursuant to the *Electoral Act 1992*

Electorates for the ACT Legislative Assembly of BRINDABELLA, GINNINDERRA and MOLONGLO

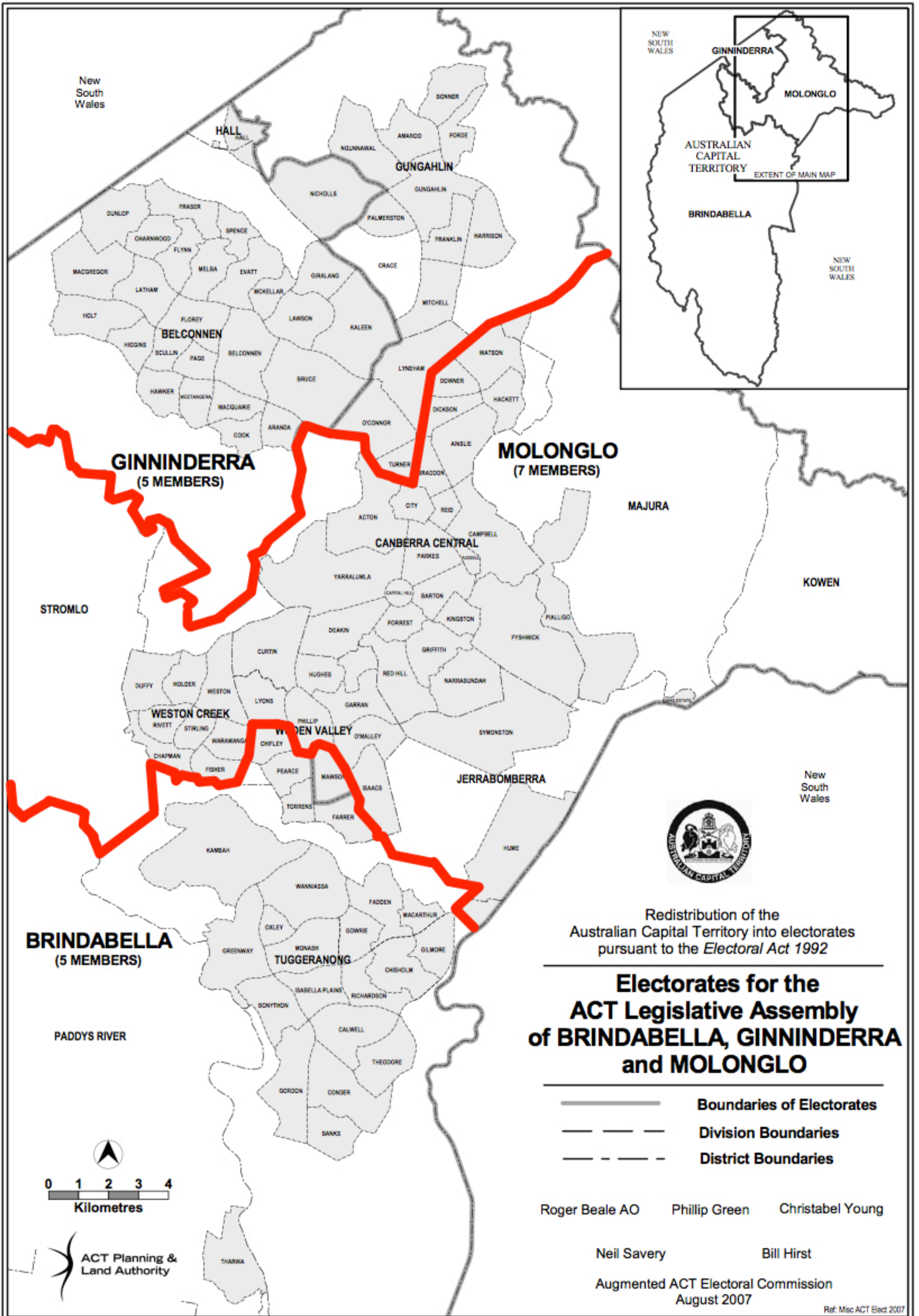
- Boundaries of Electorates
- - - Division Boundaries
- - - - District Boundaries

Roger Beale AO Phillip Green Christabel Young
 Neil Savery Bill Hirst
 Augmented ACT Electoral Commission
 August 2007



ACT Planning & Land Authority

Ref: Misc ACT Elect 2007

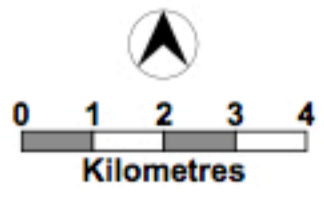


Redistribution of the Australian Capital Territory into electorates pursuant to the *Electoral Act 1992*

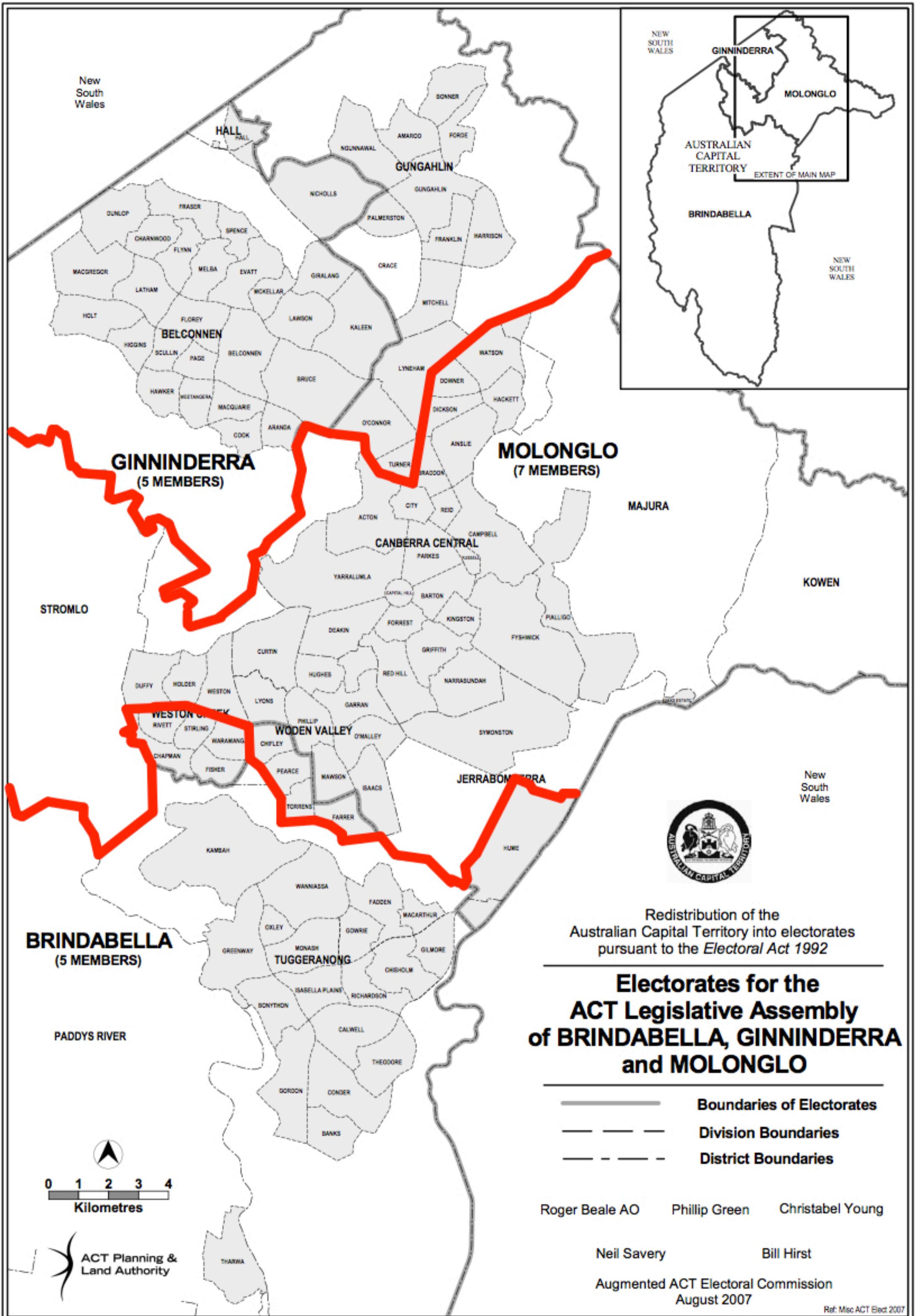
Electorates for the ACT Legislative Assembly of BRINDABELLA, GINNINDERRA and MOLONGLO

- Boundaries of Electorates
- - - Division Boundaries
- - - - District Boundaries

Roger Beale AO Phillip Green Christabel Young
 Neil Savery Bill Hirst
 Augmented ACT Electoral Commission
 August 2007



ACT Planning & Land Authority



Current and Projected Numbers of Persons Enrolled

Table 1: Australian Capital Territory

Suburb	Actual persons enrolled 30 September 2010	Projected persons enrolled 20 October 2012	% change	Present Electorate
Acton	360	368	2.22%	Molonglo
Ainslie	3864	3973	2.82%	Molonglo
Amaroo	3563	3688	3.51%	Molonglo
Aranda	1842	1836	-0.33%	Ginninderra
Banks	3370	3951	17.24%	Brindabella
Barton	827	928	12.21%	Molonglo
Belconnen Town Centre	2386	2843	19.15%	Ginninderra
Belconnen - SSD Bal	32	34	6.25%	Ginninderra
Bonner	129	523	305.43%	Molonglo
Bonython	2663	2831	6.31%	Brindabella
Braddon	2770	3157	13.97%	Molonglo
Bruce	3044	3659	20.20%	Ginninderra
Calwell	4225	4402	4.19%	Brindabella
Campbell / Duntroon / Majura	3923	3943	0.51%	Molonglo
Casey	229	723	215.72%	Molonglo
Chapman	2201	2087	-5.18%	Molonglo
Charnwood	2123	2052	-3.34%	Ginninderra
Chifley	1720	1764	2.56%	Brindabella
Chisholm	3873	3709	-4.23%	Brindabella
City	864	1060	22.69%	Molonglo
Conder	3501	4084	16.65%	Brindabella
Cook	2181	2190	-0.05%	Ginninderra
Crace	32	112	250.00%	Molonglo
Curtin	3958	3975	0.43%	Molonglo
Deakin	2110	2127	0.81%	Molonglo
Dickson	1432	1482	3.49%	Molonglo
Downer	2468	2498	1.22%	Molonglo
Duffy	2390	2260	-5.44%	Molonglo
Dunlop	4450	5218	17.26%	Ginninderra
Evatt	4058	3865	-4.76%	Ginninderra
Fadden	2489	2323	-6.67%	Brindabella
Farrer	2579	2489	-3.49%	Brindabella
Fisher	2355	2314	-1.74%	Molonglo
Florey	3606	3656	1.39%	Ginninderra
Flynn	2624	2458	-6.33%	Ginninderra
Foote	633	862	36.18%	Molonglo
Forrest	1142	1156	1.23%	Molonglo
Franklin	1189	2961	149.03%	Molonglo
Fraser	1637	1541	-5.86%	Ginninderra
Fyshwick	24	21	-12.50%	Molonglo
Garran	2317	2342	1.08%	Molonglo
Gilmore	2004	1964	-2.00%	Brindabella
Giralang	2594	2425	-6.52%	Ginninderra
Gordon	5450	6193	13.63%	Brindabella
Gowrie	2482	2371	-4.47%	Brindabella
Greenway	1088	1199	10.20%	Brindabella
Griffith	3172	3306	4.22%	Molonglo
Gungahlin	3120	3513	12.60%	Molonglo
Gungahlin-Hall - SSD Bal	16	16	0.00%	Molonglo
Hackett	2265	2299	1.50%	Molonglo
Hall	235	228	-2.98%	Ginninderra
Harman	41	38	-7.32%	Molonglo
Harrison	2462	2790	13.32%	Molonglo
Hawker	2199	2102	-4.41%	Ginninderra
Higgins	2260	2137	-5.44%	Ginninderra
Holder	2077	1978	-4.77%	Molonglo
Holt	3506	3602	2.74%	Ginninderra
Hughes	2163	2196	1.53%	Molonglo
Hume	7	7	0.00%	Molonglo
Isaacs	1903	1948	2.36%	Molonglo
Isabella Plains	2988	3008	0.67%	Brindabella
Jerrabomberra	8	9	0.00%	Molonglo
Kaleen	5701	5330	-6.51%	Ginninderra
Kambah	11752	11101	-5.54%	Brindabella
Kingston	2179	2368	8.67%	Molonglo
Kowen	25	26	4.00%	Molonglo
Latham	2775	2630	-5.23%	Ginninderra
Lynham	3340	3451	3.32%	Molonglo
Lyons	1831	1873	2.29%	Molonglo
McKellar	2131	2161	1.41%	Ginninderra
Macarthur	1161	1184	1.98%	Brindabella
Macgregor	3346	4088	22.18%	Ginninderra
Macquarie	1794	1819	1.39%	Ginninderra
Mawson	2192	2205	0.59%	Molonglo
Melba	2464	2448	-0.65%	Ginninderra
Mitchell	8	8	0.00%	Molonglo
Monash	4205	4369	3.90%	Brindabella
Narrabundah	4199	4298	2.36%	Molonglo
Ngunnawal	6008	6187	2.98%	Molonglo
Nicholls	4990	5151	3.23%	Ginninderra
Oaks Estate	192	174	-9.38%	Molonglo
O'Connor	3833	3942	2.84%	Molonglo
O'Malley	664	685	3.16%	Molonglo
Oxley	1311	1309	-0.15%	Brindabella
Page	2009	2014	0.25%	Ginninderra
Palmerston	3887	4212	8.36%	Molonglo
Parkes	3	3	0.00%	Molonglo
Pearce	1917	1925	0.42%	Brindabella
Phillip	1333	1558	16.88%	Molonglo
Pialligo	95	95	0.00%	Molonglo
Red Hill	2316	2340	1.04%	Molonglo
Reid	1107	1139	2.89%	Molonglo
Richardson	2272	2166	-4.67%	Brindabella
Rivett	2370	2383	0.55%	Molonglo
Russell	0	0	0.00%	Molonglo
Scullin	1982	1859	-6.21%	Ginninderra
Spence	1937	1836	-5.21%	Ginninderra
Stirling	1496	1433	-4.21%	Molonglo
Stromlo	6	5	-16.67%	Molonglo
Symonston	332	333	0.30%	Molonglo
Theodore	2740	2898	5.77%	Brindabella
Torrens	1694	1677	-1.00%	Brindabella
Tuggeranong - SSD Bal	26	22	-15.38%	Brindabella
Turner	2461	2535	3.01%	Molonglo
Wanniassa	5950	5591	-6.03%	Brindabella
Waramanga	1942	1825	-6.02%	Molonglo
Watson	3629	3733	2.87%	Molonglo
Weetangera	1994	1926	-3.41%	Ginninderra
Weston	2444	2416	-1.15%	Molonglo
Weston Creek-Stromlo - SSD Bal	30	26	-13.33%	Molonglo
Yarralumla	2402	2440	1.58%	Molonglo
Remainder of ACT	217	187	-13.82%	Brindabella
Total	247915	256168	3.33%	

Model 1 - MINIMAL CHANGE

Actual Molonglo (7 Member)	Projected Molonglo (7 Member)	Actual Ginninderra (5 Member)	Projected Ginninderra (5 Member)	Actual Brindabella (5 Member)	Projected Brindabella (5 Member)	Original March 2010 Electorate
360	368					Molonglo
3864	3973					Molonglo
3563	3688					Molonglo
		1842	1836			Ginninderra
827	928			3370	3951	Brindabella
		2386	2843			Molonglo
		32	34			Ginninderra
129	523					Molonglo
2770	3157	3044	3659	2663	2831	Brindabella
				4225	4402	Molonglo
3923	3943					Brindabella
229	723					Molonglo
2201	2087					Molonglo
		2123	2052			Ginninderra
				1720	1764	Brindabella
864	1060			3873	3709	Brindabella
				3501	4084	Molonglo
		2181	2180			Brindabella
		32	112			Ginninderra
3958	3975					Molonglo
2110	2127					Molonglo
1432	1482					Molonglo
2468	2498					Molonglo
2390	2260					Molonglo
		4450	5218			Ginninderra
		4058	3865			Ginninderra
				2489	2323	Brindabella
				2579	2489	Brindabella
2355	2314					Molonglo
		3606	3656			Ginninderra
		2624	2458			Ginninderra
633	862					Molonglo
1142	1156					Molonglo
1189	2961					Molonglo
		1637	1541			Ginninderra
24	21					Molonglo
2317	2342					Molonglo
		2594	2425	2004	1964	Brindabella
				5450	6193	Ginninderra
				2482	2371	Brindabella
				1088	1199	Brindabella
3172	3306					Molonglo
3120	3513					Molonglo
16	16					Molonglo
2265	2299					Molonglo
		235	228			Ginninderra
41	38					Molonglo
2462	2790					Molonglo
		2199	2102			Ginninderra
		2260	2137			Ginninderra
2077	1978					Molonglo
		3506	3602			Ginninderra
2163	2196					Molonglo
7	7					Molonglo
1903	1948			2988	3008	Brindabella
8	9					Molonglo
		5701	5330			Ginninderra
				11752	11101	Brindabella
2179	2368					Molonglo
25	26					Molonglo
		2775	2630			Ginninderra
3340	3451					Molonglo
1831	1873					Molonglo
		2131	2161			Ginninderra
				1161	1184	Brindabella
		3346	4088			Ginninderra
		1794	1819			Ginninderra
				2192	2205	Molonglo
		2464	2448			Ginninderra
8	8					Molonglo
				4205	4369	Brindabella
4199	4298					Molonglo
6008	6187					Molonglo
		4990	5151			Ginninderra
192	174					Molonglo
3833	3942					Molonglo
664	685					Molonglo
				1311	1309	Brindabella
		2009	2014			Ginninderra
		3887	4212			Molonglo
3	3					Molonglo
				1917	1925	Brindabella
1333	1558					Molonglo
95	95					Molonglo
2316	2340					Molonglo
1107	1139					Molonglo
				2272	2166	Brindabella
2370	2383					Molonglo
0	0					Molonglo
		1982	1859			Ginninderra
		1937	1836			Ginninderra
1496	1433					Molonglo
6	5					Molonglo
332	333					Molonglo
				2740	2898	Brindabella
				1694	1677	Brindabella
				26	22	Brindabella
2461	2535					Molonglo
				5950	5591	Brindabella
1942	1825					Molonglo
3629	3733	1994	1926			Molonglo
2444	2416					Ginninderra
30	26					Molonglo
2402	2440					Molonglo
				217	187	Brindabella

TOTAL	100227	105824	73819	75422	73869	74922
QUOTA	102082	105480	72916	75343	72916	75343
Variance	1855	-344	-903	-79	-953	421
%age of quota	1.82%	-0.33%	-1.24%	-0.10%	-1.31%	0.56%

Complies ensure that the number of electors in an electorate immediately after the redistribution is within the range of not greater than 110%, or less than 90% of the quota;
endeavour to ensure, as far as practicable, that the number of electors in an electorate at the time of the next general election of members of the Legislative Assembly will not be greater than 105%, or less than 95%, of the expected quota for the electorate at that time;

Complies duly consider

MODEL 2 - Northern, Central and Southern Electorates (Molonglo Adjustments)

New Actual Molonglo (5 Member)	New Projected Molonglo (5 Member)	New Actual Ginninderra (7 Member)	New Projected Ginninderra (7 Member)	Actual Brindabella (5 Member)	Projected Brindabella (5 Member)	Original March 2010 Electorate
360	368					Molonglo
3864	3973					Molonglo
		3563	3688			Molonglo
		1842	1836			Ginninderra
827	928			3370	3951	Brindabella
		2386	2843			Molonglo
		32	34			Ginninderra
		129	523			Ginninderra
				2663	2831	Molonglo
2770	3157					Brindabella
		3044	3659			Molonglo
				4225	4402	Ginninderra
3923	3943					Brindabella
		229	723			Molonglo
2201	2087					Molonglo
		2123	2052			Ginninderra
				1720	1764	Brindabella
864	1060			3873	3709	Brindabella
				3501	4084	Molonglo
		2181	2180			Brindabella
		32	112			Ginninderra
3958	3975					Molonglo
2110	2127					Molonglo
1432	1482					Molonglo
2468	2498					Molonglo
2390	2260					Molonglo
		4450	5218			Ginninderra
		4058	3865			Ginninderra
				2489	2323	Brindabella
				2579	2489	Brindabella
2355	2314					Molonglo
		3606	3656			Ginninderra
		2624	2458			Ginninderra
		633	862			Molonglo
1142	1156					Molonglo
		1189	2961			Molonglo
		1637	1541			Ginninderra
24	21					Molonglo
2317	2342					Molonglo
		2594	2425	2004	1964	Brindabella
				5450	6193	Ginninderra
				2482	2371	Brindabella
				1088	1199	Brindabella
3172	3306					Molonglo
		3120	3513			Molonglo
		16	16			Molonglo
2265	2299					Molonglo
		235	228			Ginninderra
41	38					Molonglo
		2462	2790			Molonglo
		2199	2102			Ginninderra
		2260	2137			Ginninderra
2077	1978					Molonglo
		3506	3602			Ginninderra
2163	2196					Molonglo
7	7					Molonglo
1903	1948			2988	3008	Brindabella
8	9					Molonglo
		5701	5330			Ginninderra
				11752	11101	Brindabella
2179	2368					Molonglo
25	26					Molonglo
		2775	2630			Ginninderra
		3340	3451			Molonglo
1831	1873					Molonglo
		2131	2161			Ginninderra
				1161	1184	Brindabella
		3346	4088			Ginninderra
		1794	1819			Ginninderra
				2192	2205	Molonglo
		2464	2448			Ginninderra
		8	8			Molonglo
				4205	4369	Brindabella
4199	4298					Molonglo
		6008	6187			Molonglo
		4990	5151			Ginninderra
192	174					Molonglo
		3833	3942			Molonglo
664	685					Molonglo
				1311	1309	Brindabella
		2009	2014			Ginninderra
		3887	4212			Molonglo
3	3					Molonglo
				1917	1925	Brindabella
1333	1558					Molonglo
95	95					Molonglo
2316	2340					Molonglo
1107	1139					Molonglo
				2272	2166	Brindabella
2370	2383					Molonglo
0	0					Molonglo
		1982	1859			Ginninderra
		1937	1836			Ginninderra
1496	1433					Molonglo
6	5					Molonglo
332	333					Molonglo
				2740	2898	Brindabella
				1694	1677	Brindabella
				26	22	Brindabella
		2461	2535			Molonglo
				5950	5591	Brindabella
1942	1825					Molonglo
3629	3733					Molonglo
		1994	1926			Ginninderra
2444	2416					Molonglo
30	26					Molonglo
2402	2440					Molonglo
				217	187	Brindabella

TOTAL	73236	74625	100810	106621	73869	74922
QUOTA	72916	75343	102082	105480	72916	75343
Variance	-320	718	1272	-1141	-953	421
%age of quota	-0.44%	0.95%	1.25%	-1.08%	-1.31%	0.56%

Complies ensure that the number of electors in an electorate immediately after the redistribution is within the range of not greater than 110%, or less than 90% of the quota;

Complies endeavour to ensure, as far as practicable, that the number of electors in an electorate at the time of the next general election of members of the Legislative Assembly will not be greater than 105%, or less than 95%, of the expected quota for the electorate at that time;

MODEL 3 - Northern, Central and Southern Electorates (Molonglo & Brindabella Adjustments)

New Actual Molonglo (5 Member)	New Projected Molonglo (5 Member)	New Actual Ginninderra (7 Member)	New Projected Ginninderra (7 Member)	Actual Brindabella (5 Member)	Projected Brindabella (5 Member)	Original March 2010 Electorate
360	368					Molonglo
3864	3973					Molonglo
		3563	3688			Molonglo
		1842	1836			Ginninderra
827	928			3370	3951	Brindabella
		2386	2843			Molonglo
		32	34			Ginninderra
		129	523			Ginninderra
				2663	2831	Molonglo
2770	3157					Brindabella
		3044	3659			Molonglo
				4225	4402	Ginninderra
3923	3943					Brindabella
		229	723			Molonglo
				2201	2087	Molonglo
		2123	2052			Ginninderra
1720	1764			3873	3709	Brindabella
						Brindabella
864	1060			3501	4084	Molonglo
		2181	2180			Brindabella
		32	112			Ginninderra
						Molonglo
3958	3975					Molonglo
2110	2127					Molonglo
1432	1482					Molonglo
2468	2498					Molonglo
2390	2260					Molonglo
		4450	5218			Ginninderra
		4058	3865			Ginninderra
				2489	2323	Brindabella
2579	2489					Brindabella
				2355	2314	Molonglo
		3606	3656			Ginninderra
		2624	2458			Ginninderra
		633	862			Molonglo
1142	1156					Molonglo
		1189	2961			Molonglo
		1637	1541			Ginninderra
24	21					Molonglo
2317	2342					Molonglo
		2594	2425	2004	1964	Brindabella
				5450	6193	Ginninderra
				2482	2371	Brindabella
				1088	1199	Brindabella
3172	3306					Molonglo
		3120	3513			Molonglo
		16	16			Molonglo
2265	2299					Molonglo
		235	228			Ginninderra
41	38					Molonglo
		2462	2790			Molonglo
		2199	2102			Ginninderra
		2260	2137			Ginninderra
2077	1978					Molonglo
		3506	3602			Ginninderra
2163	2196					Molonglo
				7	7	Molonglo
1903	1948					Molonglo
				2988	3008	Brindabella
8	9					Molonglo
		5701	5330			Ginninderra
				11752	11101	Brindabella
2179	2368					Molonglo
25	26					Molonglo
		2775	2630			Ginninderra
		3340	3451			Molonglo
1831	1873					Molonglo
		2131	2161			Ginninderra
				1161	1184	Brindabella
		3346	4088			Ginninderra
		1794	1819			Ginninderra
2192	2205					Molonglo
		2464	2448			Ginninderra
		8	8			Molonglo
				4205	4369	Brindabella
4199	4298					Molonglo
		6008	6187			Molonglo
		4990	5151			Ginninderra
192	174					Molonglo
		3833	3942			Molonglo
664	685					Molonglo
				1311	1309	Brindabella
		2009	2014			Ginninderra
		3887	4212			Molonglo
3	3					Molonglo
1917	1925					Brindabella
1333	1558					Molonglo
95	95					Molonglo
2316	2340					Molonglo
1107	1139					Molonglo
				2272	2166	Brindabella
				2370	2383	Molonglo
0	0					Molonglo
		1982	1859			Ginninderra
		1937	1836			Ginninderra
				1496	1433	Molonglo
6	5					Molonglo
332	333					Molonglo
				2740	2898	Brindabella
1694	1677					Brindabella
		2461	2535	26	22	Molonglo
				5950	5591	Brindabella
				1942	1825	Molonglo
3629	3733					Molonglo
		1994	1926			Ginninderra
2444	2416					Molonglo
30	26					Molonglo
2402	2440					Molonglo
				217	187	Brindabella

TOTAL	72967	74636	100810	106621	74138	74911
QUOTA	72916	75343	102082	105480	72916	75343
Variance	-51	707	1272	-1141	-1222	432
%age of quota	-0.07%	0.94%	1.25%	-1.08%	-1.68%	0.57%

Complies ensure that the number of electors in an electorate immediately after the redistribution is within the range of not greater than 110%, or less than 90% of the quota;

Complies endeavour to ensure, as far as practicable, that the number of electors in an electorate at the time of the next general election of members of the Legislative Assembly will not be greater than 105%, or less than 95%, of the expected quota for the electorate at that time;